





Flat 3

Meadville Meadfoot Sea Road, Torquay

Located in the highly sought-after area close to Meadfoot Beach, Wellswood village, and Daddyhole Plain, this impressive 2-bedroom first-floor flat which is being sold with NO ONWARD CHAIN offers a rare opportunity to own a property in a prime location. Situated in a select building constructed in the early 80s, this spacious flat is one of only eight in the building, with the added benefit of a share of the freehold. There is plenty of outdoor space at Meadville such as the communal garden, parking facilities as well as the communal drying area

This property, which is being offered to the market for the first time ever, has been meticulously maintained and cared for by the current owners since new. Upon entering the flat, you are welcomed into a spacious lounge and a separate dining room, providing ample space for entertaining guests or relaxing in comfort.

The accommodation comprises two well-proportioned bedrooms, both equipped with built-in wardrobes, offering convenience and practicality. The modernised and contemporary shower suite features a double-width cubicle, perfect for unwinding after a long day.



One of the standout features of this flat is the balcony to the front of the building, offering a pleasant outlook and a wonderful spot to enjoy your morning coffee or evening drinks. Additionally, this property benefits from being one of the select few flats with its very own garage and parking space, making parking a breeze.

The separate and well-sized kitchen provides a functional space for preparing meals, with plenty of storage and work surfaces for the avid cook.

Communal Garden

There is a communal garden for the enjoyment of all residents

Balcony

There is a private balcony at the front of the property to enjoy a pleasant outlook.

GARAGE

Single Garage

ALLOCATED PARKING

1 Parking Space

OFF STREET

1 Parking Space

Visitors parking bays which are signposted



Flat 3

Meadville Meadfoot Sea Road, Torquay

Meadville is a small, select purpose built development of just eight apartments enviably positioned just a short saunter from the scenic Meadfoot Beach, Hesketh Crescent and picturesque Ilsham Valley. Torquay's bustling harbourside and town centre are also easily accessible in the opposite direction yet the development is quietly tucked away in one of Torbay's most prestigious and sought after districts. Torquay is nestled on the warm South Devon coast being one of three towns along with Paignton and Brixham which form the natural east facing harbour of Torbay, sheltered from the English Channel. Torbay's wide selection of stunning beaches, picturesque coastline, mild climate and recreational facilities reinforce why it has rightfully earned the renowned nickname of the English Riviera.

Council Tax band: D

Tenure: Share of Freehold



ABSOLU

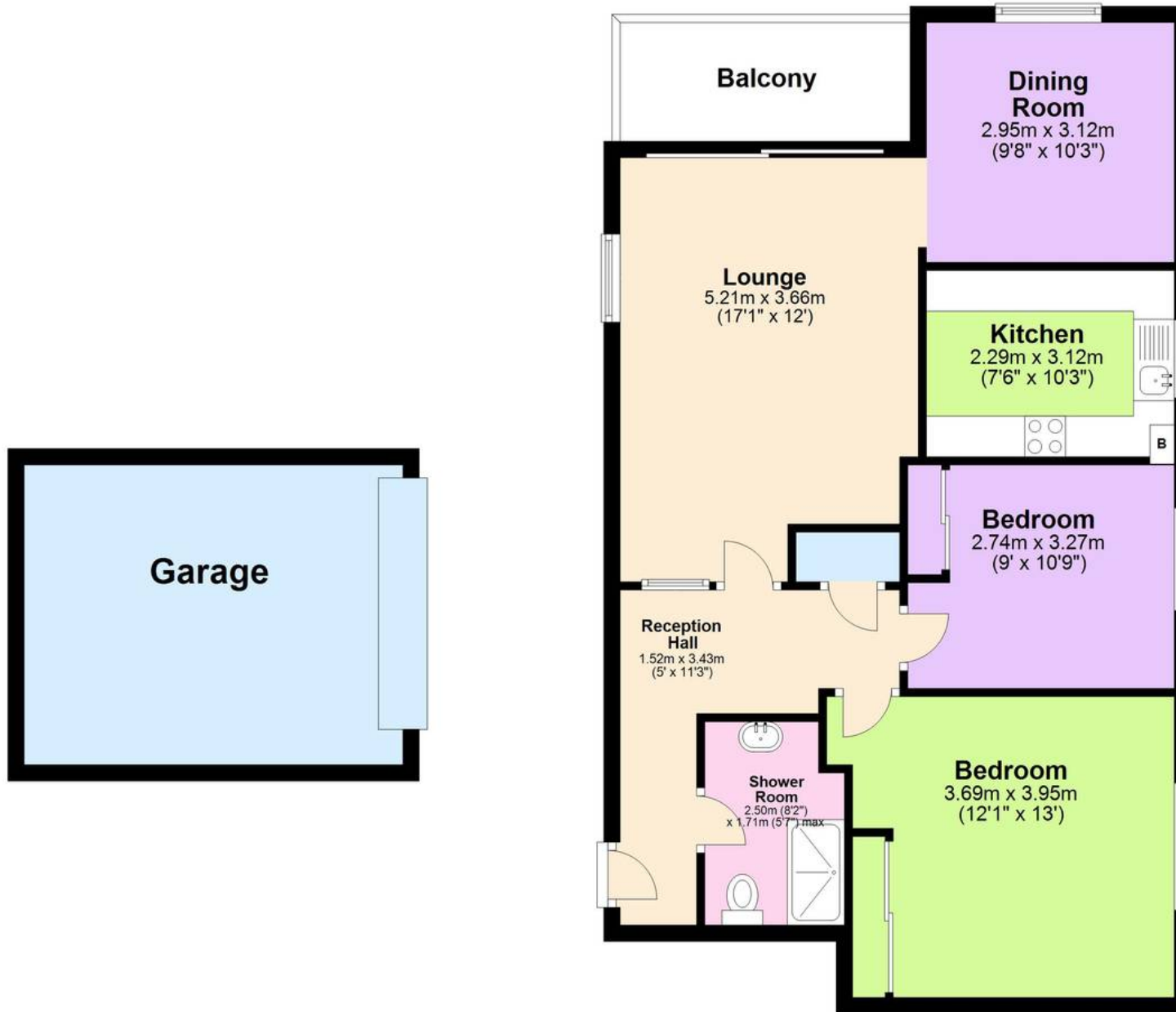


ABSOLUTE



First Floor

Approx. 73.1 sq. metres (786.5 sq. feet)



Total area: approx. 73.1 sq. metres (786.5 sq. feet)

Approx
Plan produced using PlanUp.





Absolute Sales & Lettings

Absolute Sales & Lettings Ltd, 13 Ilsham Road - TQ1 2JG

01803 214214

torquay@movewithabsolute.co.uk

movewithabsolute.co.uk/

