



Greenfield Road, Paignton

Paignton

£425,000

ARSC



Greenfield Road

Paignton,

Stunning detached dormer bungalow with 3 double bedrooms, modern kitchen/dining room, underfloor heating, wood burner, study, loft space, utility room, garage, and sea views. Ideal for modern living with elegant finishes and tranquil surroundings.

Council Tax band: D

Tenure: Freehold

EPC Energy Efficiency Rating: C

EPC Environmental Impact Rating: D

- Well presented detached dormer bungalow in a cul-de-sac location
- 3 Double bedrooms
- En-suite shower room and family bathroom
- Stunning newly fitted kitchen/dining room with integrated appliances and bi-fold doors to the garden
- Spacious lounge with wood burner
- Lovely open views stretching towards the sea in the distance
- Spacious front balcony enjoying the great views
- Study area and walk-in loft space
- Separate utility room and garage
- Private and enclosed rear garden with new composite decking



Greenfield Road

Paignton,

The property is located in a popular residential area of Paignton giving good access to the Ring Road linking the towns of Torquay and Newton Abbot. Paignton town centre with its array of shops, cafes and restaurants is approximately 2 miles away, along with the lovely coastline and its wonderful walks. There is a train station in Paignton linking to the mainline station in Newton Abbot.

Absolute Sales & Lettings

Absolute Sales & Lettings, 27 Hyde Road - TQ4 5BP

01803 890110

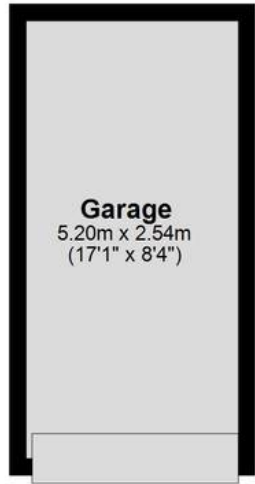
paignton@movewithabsolute.co.uk

<http://www.movewithabsolute.co.uk>



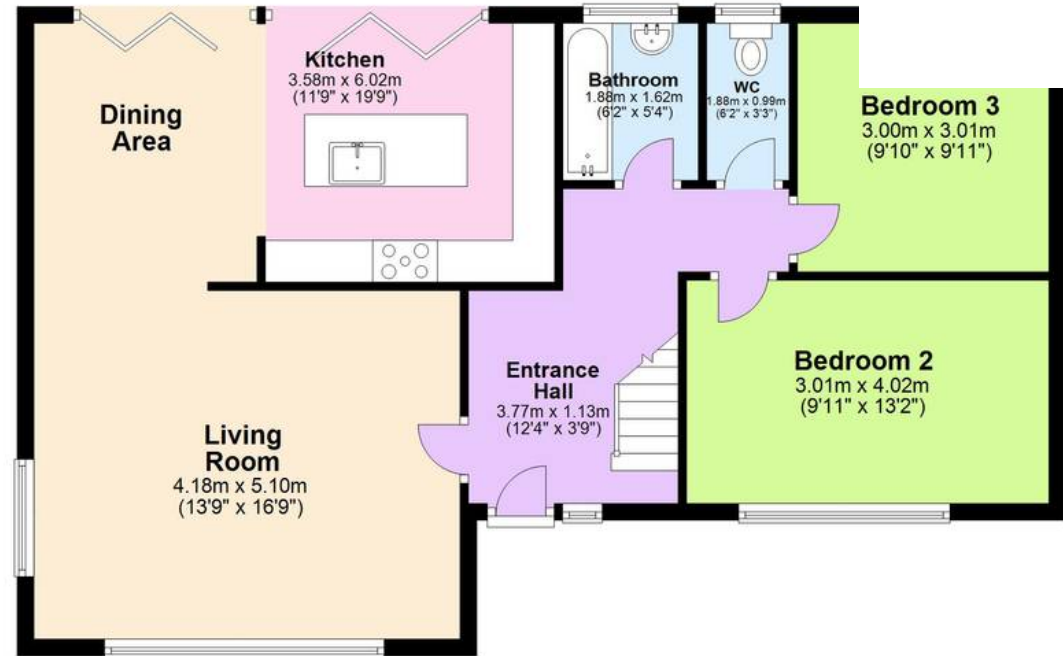
Garden Level

Approx. 27.3 sq. metres (294.2 sq. feet)



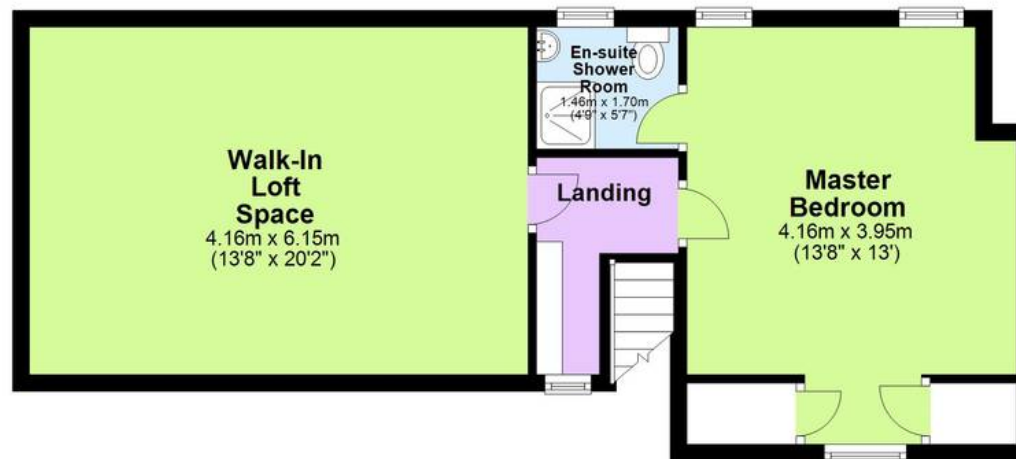
Ground Floor

Approx. 74.7 sq. metres (803.7 sq. feet)



First Floor

Approx. 50.9 sq. metres (548.4 sq. feet)



Total area: approx. 152.9 sq. metres (1646.3 sq. feet)

Approx
Plan produced using PlanUp.

