

33 Buckingham Road

Epping, Essex

Guide Price £1,150,000

A stunningly spacious six bedroom family home located in Buckingham Road within Epping's award winning Arboretum development. Featured in Essex Life magazine's four of the best dream homes, this is a captivating place to live and call home.

Tenure: Freehold

- THREE EN-SUITES AND A FAMILY BATHROOM
- WALKING DISTANCE TO EPPING STATION
- MODERN SPACIOUS KITCHEN/ DINER
- SIX BEDROOM FAMILY HOME
- GARAGE & OFF ROAD PARKING
- CLOSE TO EPPING HIGH STREET
- SHORT WALK TO LOCAL SCHOOLS
- LANDSCAPED REAR GARDEN
- UTILITY ROOM



Entrance Hall

13' 5" x 4' 1" (4.10m x 1.24m)

En-suite Bathroom

5' 6" x 11' 10" (1.68m x 3.60m)

Family Bathroom

6' 5" x 6' 0" (1.95m x 1.82m)

Bedroom Six

9' 11" x 6' 6" (3.02m x 1.98m)

Bedroom Five

10' 6" x 8' 9" (3.20m x 2.66m)

Bedroom Four

12' 3" x 10' 3" (3.73m x 3.13m)

En-suite Shower Room

5' 6" x 4' 8" (1.67m x 1.43m)

Bedroom Three

13' 3" x 10' 6" (4.04m x 3.21m)

Top Floor**En-suite Shower Room****Bedroom Two**

14' 9" x 9' 11" (4.50m x 3.01m)

Walk-in Wardrobe

5' 7" x 6' 11" (1.71m x 2.10m)

Master Bedroom

13' 3" x 10' 2" (4.04m x 3.09m)

First Floor**Utility Room**

7' 4" x 5' 7" (2.24m x 1.71m)

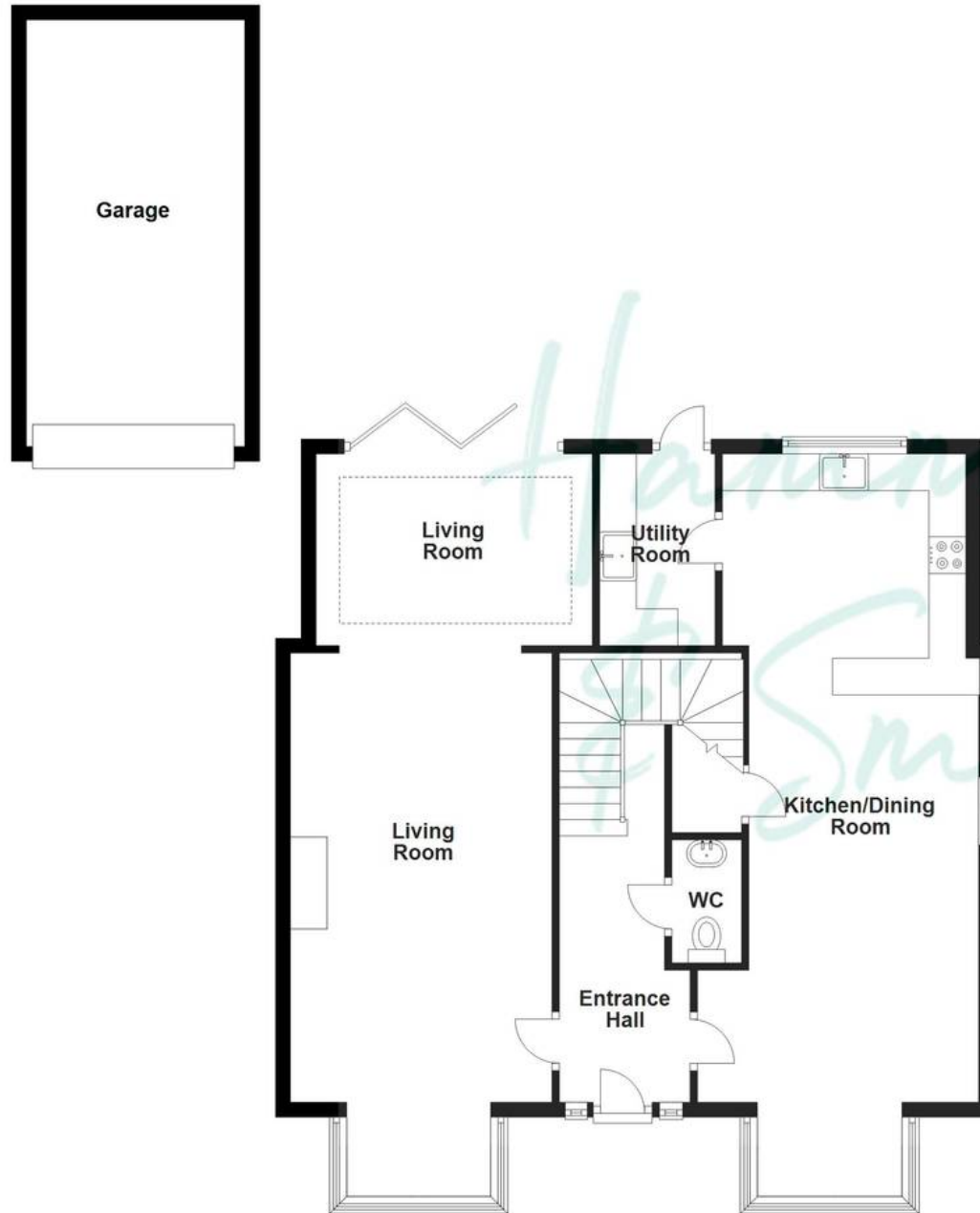
Kitchen/ Diner

32' 5" x 9' 11" (9.88m x 3.02m)

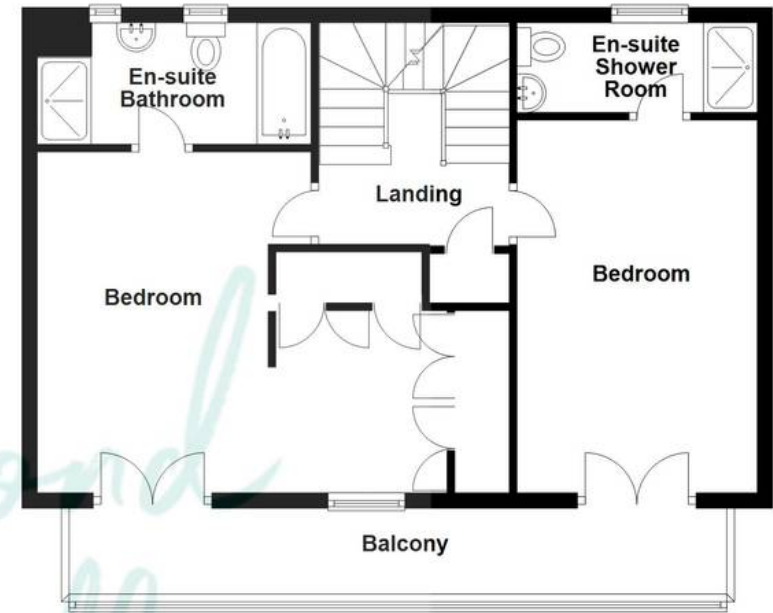




Ground Floor



First Floor



Second Floor

