



  
**Andrew Pearce**  
PINNER

MISBOURNE AVENUE, CHALFONT ST. PETER, SL9 0PD £895,000





**This stunning detached house is situated on a highly sought-after residential road in the Chalfont Common area of the village. It is offered chain-free, making it an attractive option for buyers looking for a smooth and swift purchase process.**

The property has undergone extensive remodelling and modernisation, ensuring a contemporary and stylish living environment. The low-maintenance rear garden provides a perfect space for relaxation and outdoor activities. Inside, the accommodation is both spacious and well-appointed, featuring:

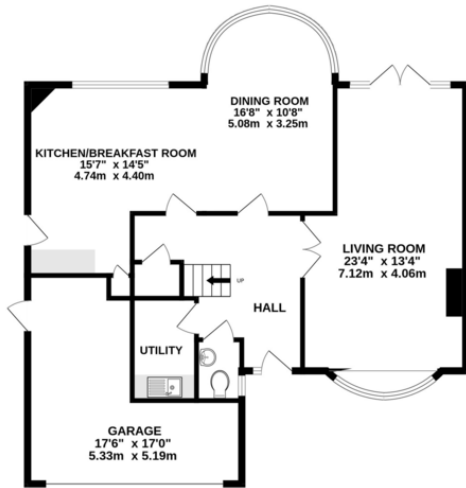
- A welcoming hallway
- A convenient cloakroom
- A comfortable sitting room
- A modern, fully fitted kitchen with a dining area
- Four generously sized bedrooms
- A master bedroom with an en suite shower room
- A family bathroom

Additional features of this impressive home include gas central heating, double glazing, an integral single/storage garage, and off-street parking for several cars.

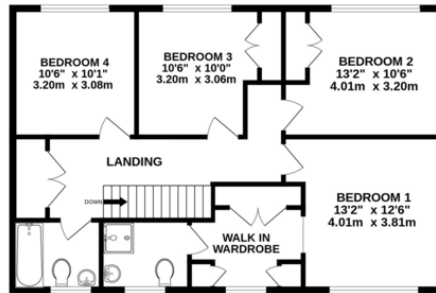
The location is ideal, being just a short drive from the village center, which offers a variety of amenities, excellent schools, and close proximity to Gerrards Cross village and train station. This property truly combines modern living with convenience and accessibility, making it a perfect family home.



GROUND FLOOR  
1058 sq.ft. (98.3 sq.m.) approx.



1ST FLOOR  
811 sq.ft. (75.3 sq.m.) approx.



TOTAL FLOOR AREA : 1869 sq.ft. (173.6 sq.m.) approx.

Whilst every attempt has been made to ensure the accuracy of the floorplan contained here, measurements of doors, windows, rooms and any other items are approximate and no responsibility is taken for any error, omission or mis-statement. This plan is for illustrative purposes only and should be used as such by any prospective purchaser. The services, systems and appliances shown have not been tested and no guarantee as to their operability or efficiency can be given.  
Made with Metropix ©2024



