



MILE



Yewfield Road, London NW10 £699,950 Freehold

Welcome to this well-presented family home, perfectly designed for comfortable living and located on a quiet residential road. This spacious freehold property boasts four generously sized bedrooms and three modern bathrooms, offering ample space for a growing family.

The home is in great condition, with an abundance of natural light that enhances its warm and inviting atmosphere. A private garden provides a serene outdoor space, ideal for relaxation and family gatherings.

Situated in a good location, this home combines peace and convenience, with easy access to local amenities and transport links. Don't miss the opportunity to make this beautifully maintained family home your own, where comfort and style meet in perfect harmony.

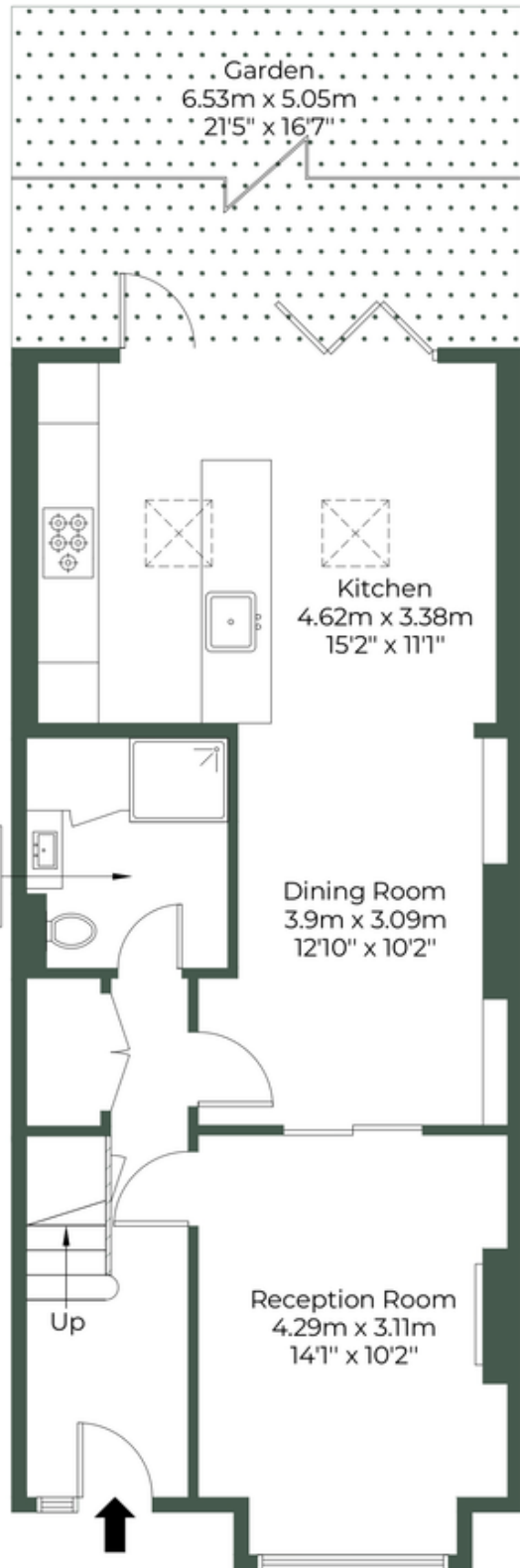
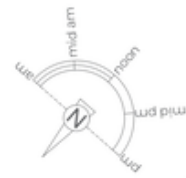
- **Well presented family home**
- **Freehold**
- **Spacious**
- **Great condition**
- **Quiet residential road**
- **Private garden**
- **Natural light**
- **Good location**
- **Four bedrooms**
- **Three bathrooms**

YEWFIELD ROAD, NW10 9TD

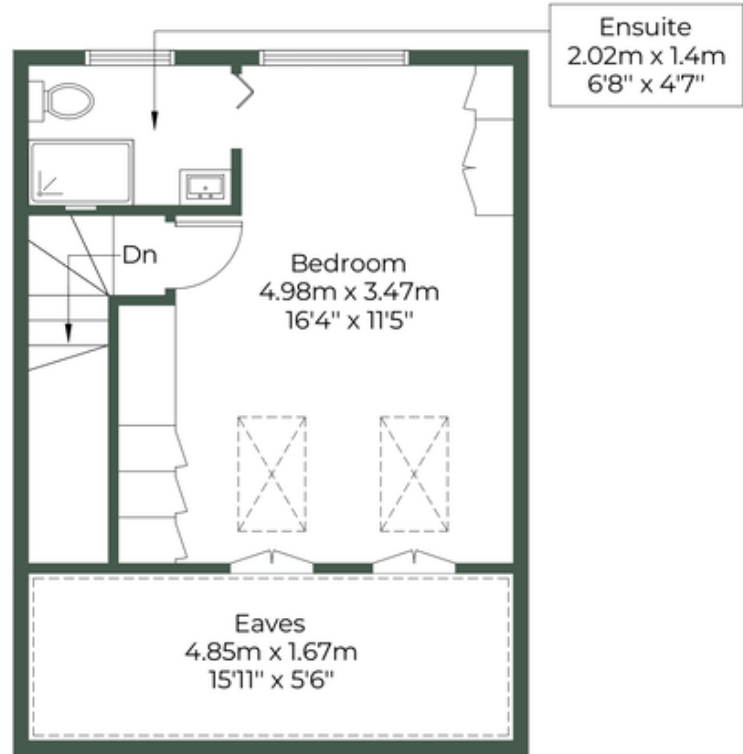
Approximate Gross Internal Area = 118.3 sq.m / 1273 sq.ft

Restricted head height = 8.1 sq.m / 87 sq.ft

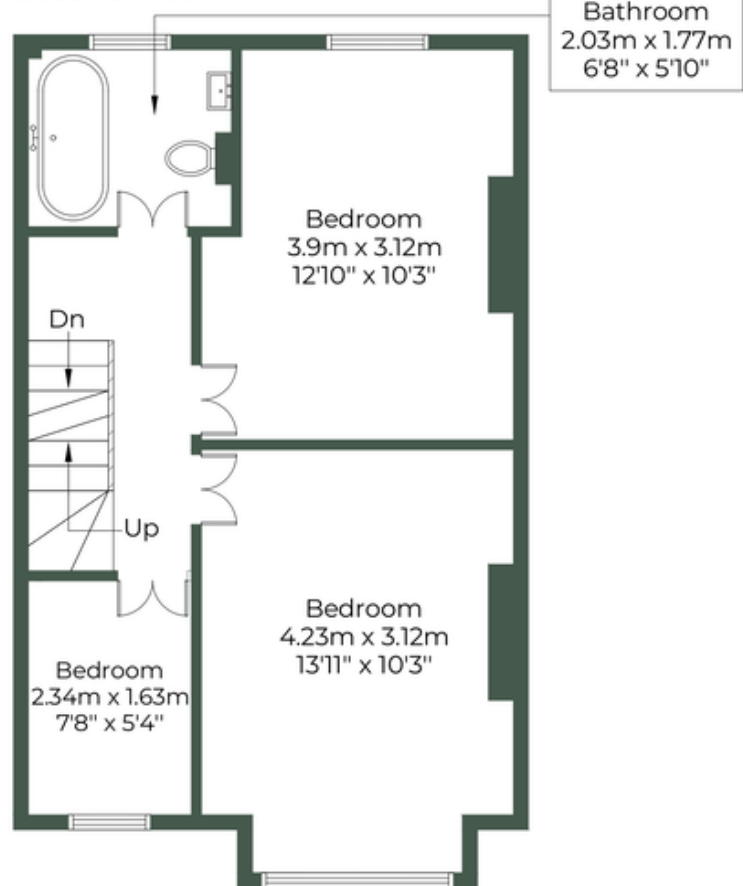
Total = 126.4 sq.m / 1361 sq.ft



Ground Floor



Second Floor



First Floor



MONEY LAUNDERING REGULATIONS 2003: Intending purchasers will be asked to produce identification documentation at a later stage and we would ask for your co-operation in order that there will be no delay in agreeing the sale.

General: While we endeavour to make our sales particulars fair, accurate and reliable, they are only a general guide to the property and, accordingly, if there is any point which is of particular importance to you, please contact the office and we will be pleased to check the position for you, especially if you are contemplating travelling some distance to view the property.

Measurements: These approximate room sizes are only intended as general guidance. You must verify the dimensions carefully before ordering carpets or any built-in furniture.

Services: Please note we have not tested the services or any of the equipment or appliances in this property, accordingly we strongly advise prospective buyers to commission their own survey or service reports before finalising their offer to purchase.