



# Village Estates

Independent Estate Agents & Mortgage Advisors



*Smithstone*

*22 Hopepark Drive*

*G68 9FH*

# 7 Bedroom Detached Villa

Hallway • Lounge • Dining Room • Dining Kitchen • Utility • W.C  
7 Bedrooms • Jack n Jill En-Suite • Master En-Suite • Shower Room • Bathroom  
Driveway • Double Integral Garage • Gardens

Village Estates are delighted to welcome to the market this stunning rarely available larger style 7 bedroom detached villa situated in the much sought after Smithstone area of Cumbernauld. Internally the property comprises of a welcoming hallway which leads to a fabulous size lounge with French doors leading to the rear garden. The hallway also leads to a fantastic size dining room which can also be utilized as a home office, games room or 2<sup>nd</sup> sitting room. The accommodation continues with a luxury fitted kitchen which include a generous range of base and wall mounted units with integrated oven, hob and hood with large breakfast bar offering ample space for dining. The kitchen also leads to both the rear garden through French doors and a spacious utility room with access to the side. The lower level is complete with access to the double garage and a bright W.C

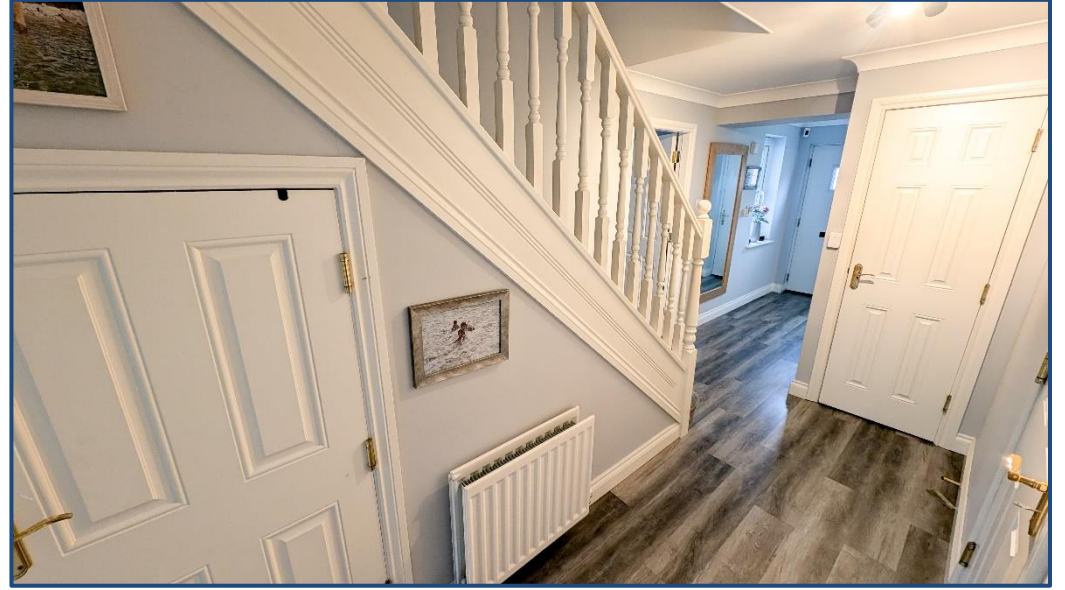
The 1<sup>st</sup> level accommodates 4 double bedrooms and a generous size single with bedroom 3 and 4 leading to a jack n jill en-suite shower room. Bedroom No.2 has built in wardrobes offering excellent storage and a beautiful en-suite shower room. The 1<sup>st</sup> level is complete with a modern family bathroom comprising of a 3 piece white jacuzzi bath suite.

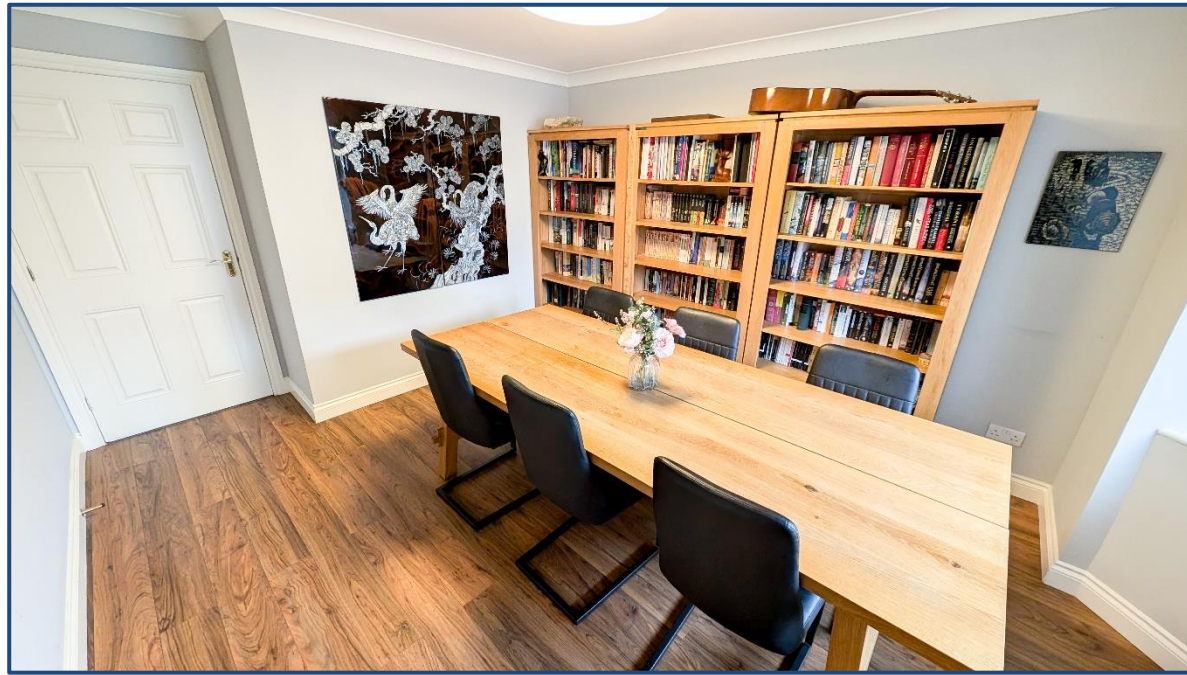
The top level accommodates 2 fabulous size bedrooms with the master being of an extensive size. The top level is complete with a spacious shower room.

The property also benefits from fully double glazing and a system of gas central heating. Externally the property sits on a lovely plot with gardens to the front, side and rear. There is a large driveway leading to a double integral garage. Viewing is essential to fully appreciate the accommodation on offer on this stunning 7 bedroom detached villa which is in truly walk in condition.

- Hallway
- Lounge 16'01" x 14'01"
- Dining Room 13'01" x 10'01"
- Kitchen 19'00" x 11'01"
- Utility
- W.C
- Shower Room
- Bathroom
- Bedroom No. 1 12'00" x 10'00"
- En-Suite
- Bedroom No. 2 11'00" x 10'00"
- Bedroom No. 3 14'00" x 10'00"
- Jack n Jill En-Suite
- Bedroom No. 4 11'00" x 11'00"
- Bedroom No. 5 8'00" x 8'00"
- Bedroom No. 6 18'01" x 11'00"
- Bedroom No. 7 18'01" x 15'00"

These particulars are believed to be correct and do not form part of any contract. Measurements have been taken using a sonic tape and may be subject to a small margin of error. Electrical/Gas fittings have not been tested and are assumed to be in working order. Photographs are included for information purposes only and it should not be assumed that any item is included in the purchase price of the property.





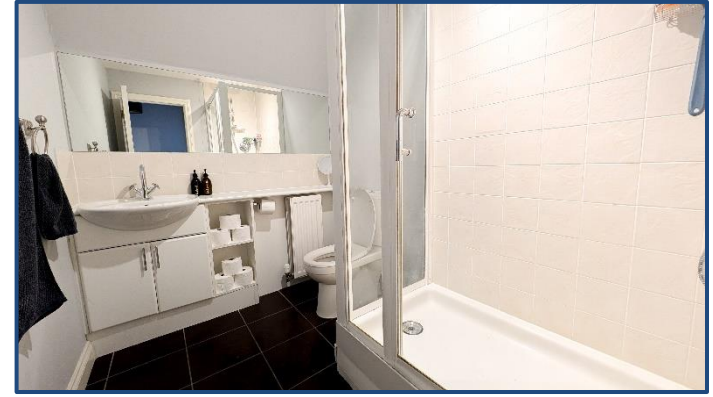
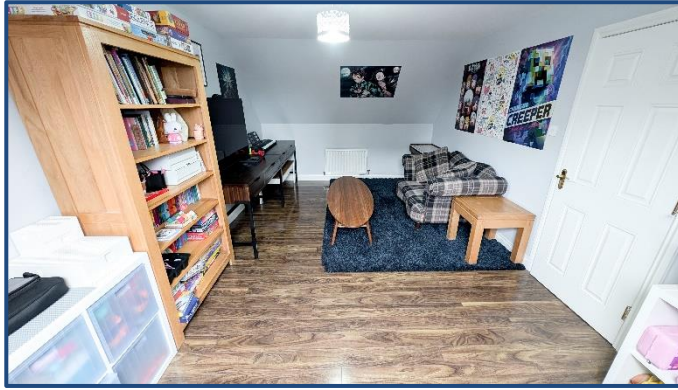














## Selling Your Property !!

Contact us Now for a Free Valuation - We Offer a Full Sales & Marketing Package for a Very Competitive Fee

## Mortgage

Village Estates Mortgages offers a full range of Mortgage and Re-Mortgage facilities

## Home Reports, Surveys, Solicitors can also be arranged

### Office Opening Hours

9am – 5.30pm Monday – Friday

10am – 1pm Saturday (Cumbernauld Only)

Please contact either of our Branch Tel. Nos. during Saturday opening times for all enquiries

2 The Wynd, The Village, CUMBERNAULD

Zoopla.co.uk

**Tel: 01236 636101**

 rightmove.co.uk

[www.ve-ea.co.uk](http://www.ve-ea.co.uk)

 s1homes.com