



Cheviot Meadows

Acklington, Morpeth

- Five Bedroom Detached
- Immaculately Presented
- Solid Oak Staircase
- Double Garage
- High Specification Throughout
- Three Fully Tiled Bathrooms
- Low Maintenance Garden
- Countryside Views

Council Tax band: F

Tenure: Freehold

EPC Energy Efficiency Rating: B

EPC Environmental Impact Rating: B



Northumberland
Properties

Northumberland Properties are delighted to welcome to the market this stunning five-bedroom detached property, located in the peaceful village of Acklington, Northumberland.

Spanning an impressive 2,613 square feet, the home boasts spacious and immaculately presented rooms, each finished to a high specification. With three luxurious bathrooms, two of the bedrooms enjoy the convenience of ensuite facilities, and all bathrooms are fully tiled, reflecting the home's commitment to quality and detail.

The heart of the house is its beautiful oak staircase, leading to generously proportioned bedrooms and living areas. The property features a manageable garden with patio and lawn, adding to the charm and ease of upkeep, while the double garage, complete with an electric door, offers secure and convenient storage space. Located on a small, exclusive estate, this attractive home is still under its new-build warranty, giving peace of mind to prospective buyers.

Situated near the Northumberland coastline and within easy reach of larger towns, Acklington provides a perfect balance of rural living with access to essential amenities. Ideal for families and those seeking a peaceful lifestyle, this property offers both luxury and comfort in one of the most beautiful areas of the region.



GARDEN

Lawned garden to the rear with flagged patio seating.

GARDEN

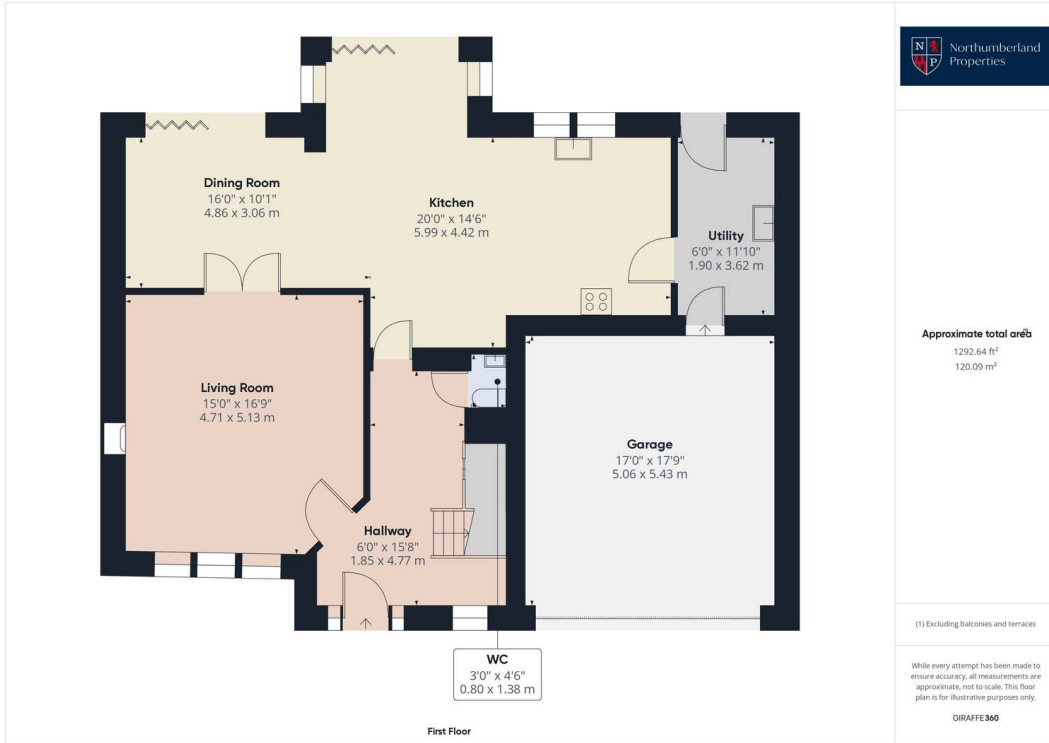
Front Garden laid to lawn

GARAGE

Double Garage

Large driveway for multiple cars leading to double integral garage







Northumberland Properties

12 Market Street, Alnwick - NE66 1TL

01665660910 • info@northumberlandproperties.co.uk • <http://northumberlandproperties.co.uk>



Northumberland
Properties