



Moseley, Sillars Green, Tetbury Road

Malmesbury

£319,995

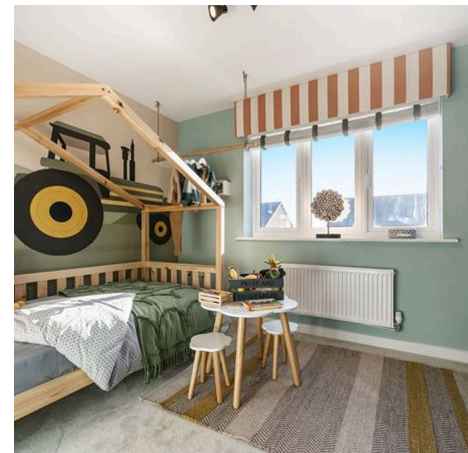
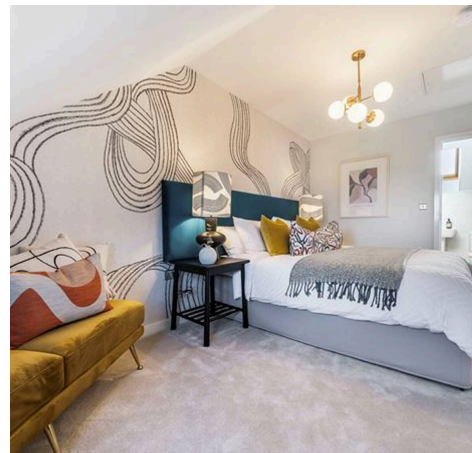
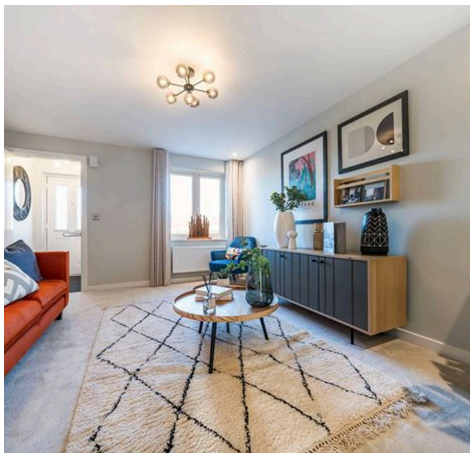


Moseley, Sillars Green

Tetbury Road, Malmesbury

Perfect for the way we live today, the three-bedroom, 2.5-storey Moseley has a modern open plan kitchen/dining/living room with French doors leading into the garden. Upstairs there are three nicely-proportioned bedrooms and a family-sized bathroom. Appealing to families, first-time buyers and young professionals.

- SOLAR PANELS
- OVER 15FT MAIN BEDROOM
- OPEN PLAN KITCHEN/DINING/LIVING
- THREE BEDROOMS
- 2 PARKING SPACES
- WC
- END TERRACE



Entrance Hall

Kitchen/Dining/Living Room

22' 2" x 12' 2" (6.75m x 3.71m)

WC

Landing

Bedroom 2

7' 10" x 12' 2" (2.39m x 3.71m)

Bedroom 3

7' 9" x 12' 2" (2.36m x 3.71m)

Bathroom

Bedroom 1

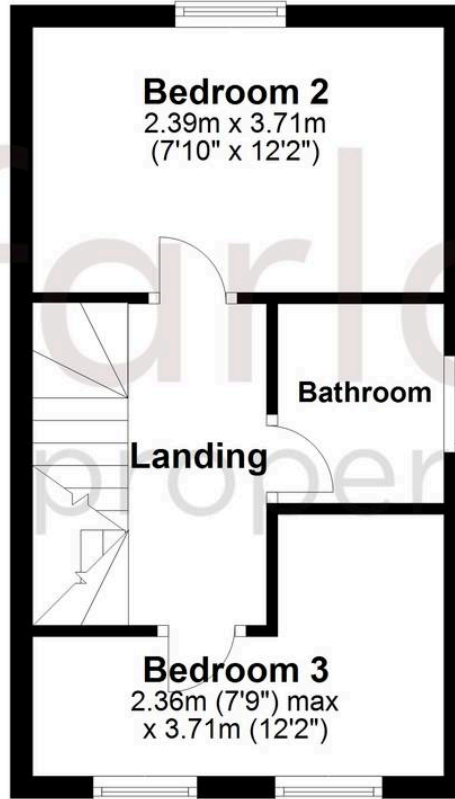
15' 7" x 9' 0" (4.75m x 2.75m)



Ground Floor



First Floor



Second Floor



McFarlane Sales & Lettings

North Swindon, Redhouse Village Centre, Swindon - SN25 2FW

01793 296600 • swindon@mcfarlaneproperty.com • www.mcfarlaneproperty.com/