

10 Fort D'Auvergne Block A, Le Harve des Pas, St Helier
£775,000

BROADLANDS

FINDING YOU A HOME SINCE 1972

10 Fort D'Auvergne Block A, Le Harve des Pas

St Helier, Jersey

- Luxury brand new development
- First floor 2 bedroom, 2 bathroom apartment
- Stunning sea views
- Allocated parking plus visitor spaces
- Lift access to all floors
- Electric underfloor heating throughout
- Sole agent



10 Fort D'Auvergne Block A, Le Harve des Pas

St Helier, Jersey

Welcome to Fort d'Auvergne Block A, no.10 is a first floor 2 bedroom apartment with stunning sea views facing South.

Lounge / Kitchen

Open plan reception spaces

- Fully fitted high quality "English Rose" kitchen
- Minerva work-surfaces
- Franke stainless steel 1½ bowl sink and drainer with chrome finish mixer tap
- A wide range of NEFF integrated appliances:-
- black glass induction hob
- circotherm stainless steel oven
- stainless steel extractor hood
- fridge/freezer
- dishwasher
- Microwave
- Caple Slot-in Wine cooler

Bedrooms & Bathrooms

Double bedrooms all facing the sea, en-suite shower room and main bathroom off the entrance hall.

Bathroom and en-suites

- Quality Ideal Standard white sanitary ware
- Merlyn Ionic shower screens and shower trays
- Thermostatic shower mixers
- Strip light with shaver socket





Outside

Large Southern terrace with doors from the lounge and both bedrooms. Finished with composite decking.

Communal areas

- Designated parking space
- 3 x Visitor parking spaces
- Gated pedestrian access to the promenade
- Otis passenger lift to all floors
- Communal door entry system
- Communal satellite dish system

Services

- Heating and water
- Robbens wet underfloor heating
- Thermostatic controls to each room (WiFi controllable)
- Electric boiler (Comet 14kW)
- Rointe electric heated towel rail to bathroom and en-suite
- Pressurised hot water cylinder. Albion 210 ltr unvented indirect cylinder providing hot water by means of electric immersion or electric boiler (Apt 14 (1 bed apt) has Albion 180 ltr)
- Nuair whole apartment ventilation system
- Grohe Sense Guard leak detection and automatic shut-off system
- Electrical
- Brushed aluminium sockets in kitchen (white sockets in all other areas)
- USB charger socket in the kitchen
- LED spotlight fittings
- Under unit LED strip lighting in Kitchen
- Balconies have external lighting
- Mains wired fire/smoke detection system
- TV and telephone
- All rooms wired for Satellite TV
- All rooms wired with CAT 6 cabling for telephone and data

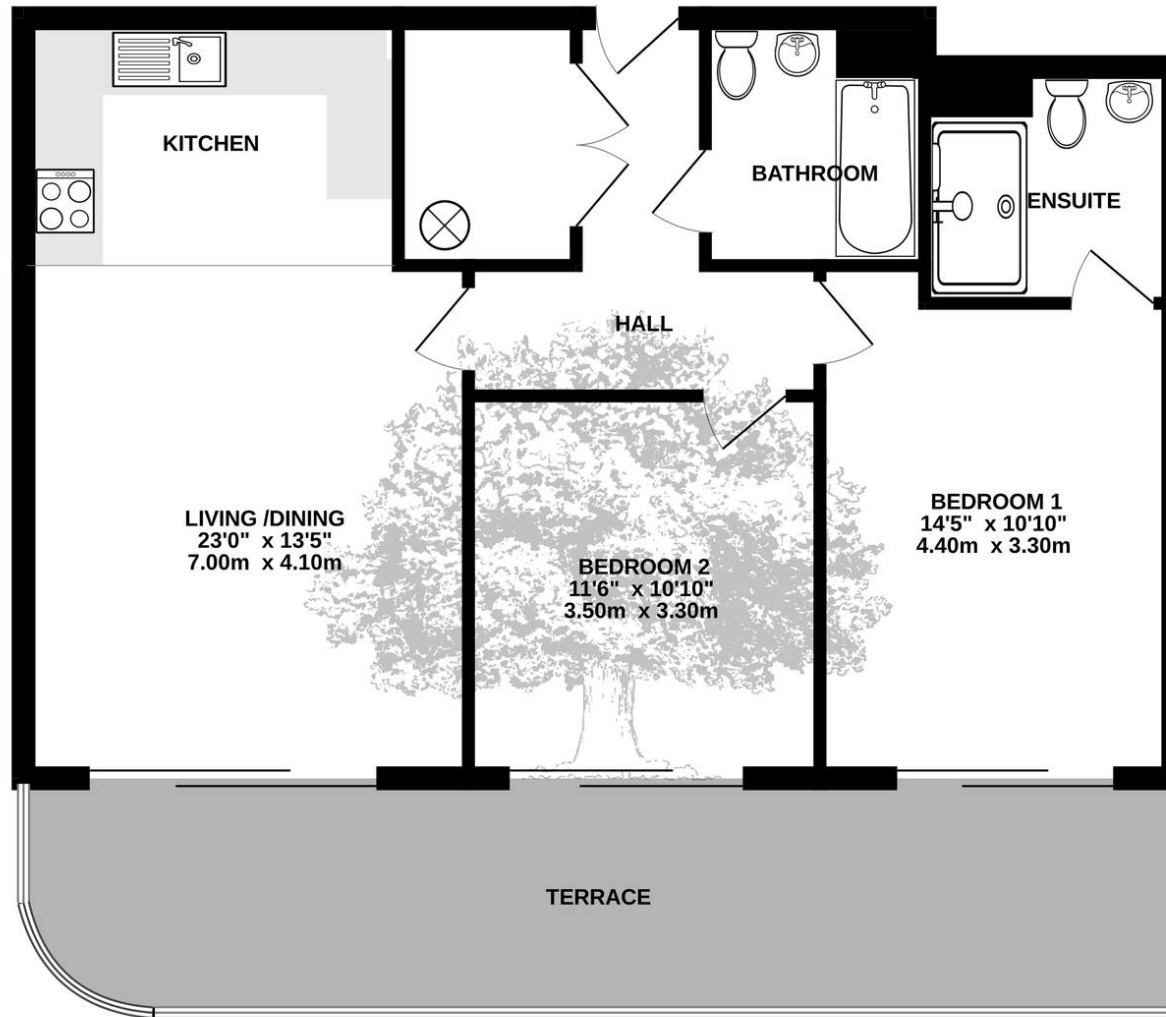


Service charge

£148.89 per month. Includes building insurance, cleaning, communal power and lighting, garden maintenance, lift maintenance and management fees.



FIRST FLOOR
823 sq.ft. (76.5 sq.m.) approx.



TOTAL FLOOR AREA : 823 sq.ft. (76.5 sq.m.) approx.

Whilst every attempt has been made to ensure the accuracy of the floorplan contained here, measurements of doors, windows, rooms and any other items are approximate and no responsibility is taken for any error, omission or mis-statement. This plan is for illustrative purposes only and should be used as such by any prospective purchaser. The services, systems and appliances shown have not been tested and no guarantee as to their operability or efficiency can be given.
Made with Metropix ©2024



Broadlands

Broadlands Estates, Library Place - JE2 3NL

01534 880770 • enquiries@broadlandsjersey.com • www.broadlandsjersey.com/

BROADLANDS

FINDING YOU A HOME SINCE 1972