

Plot 28 Tong Road, Isle of Lewis, HS2 0JF



Description

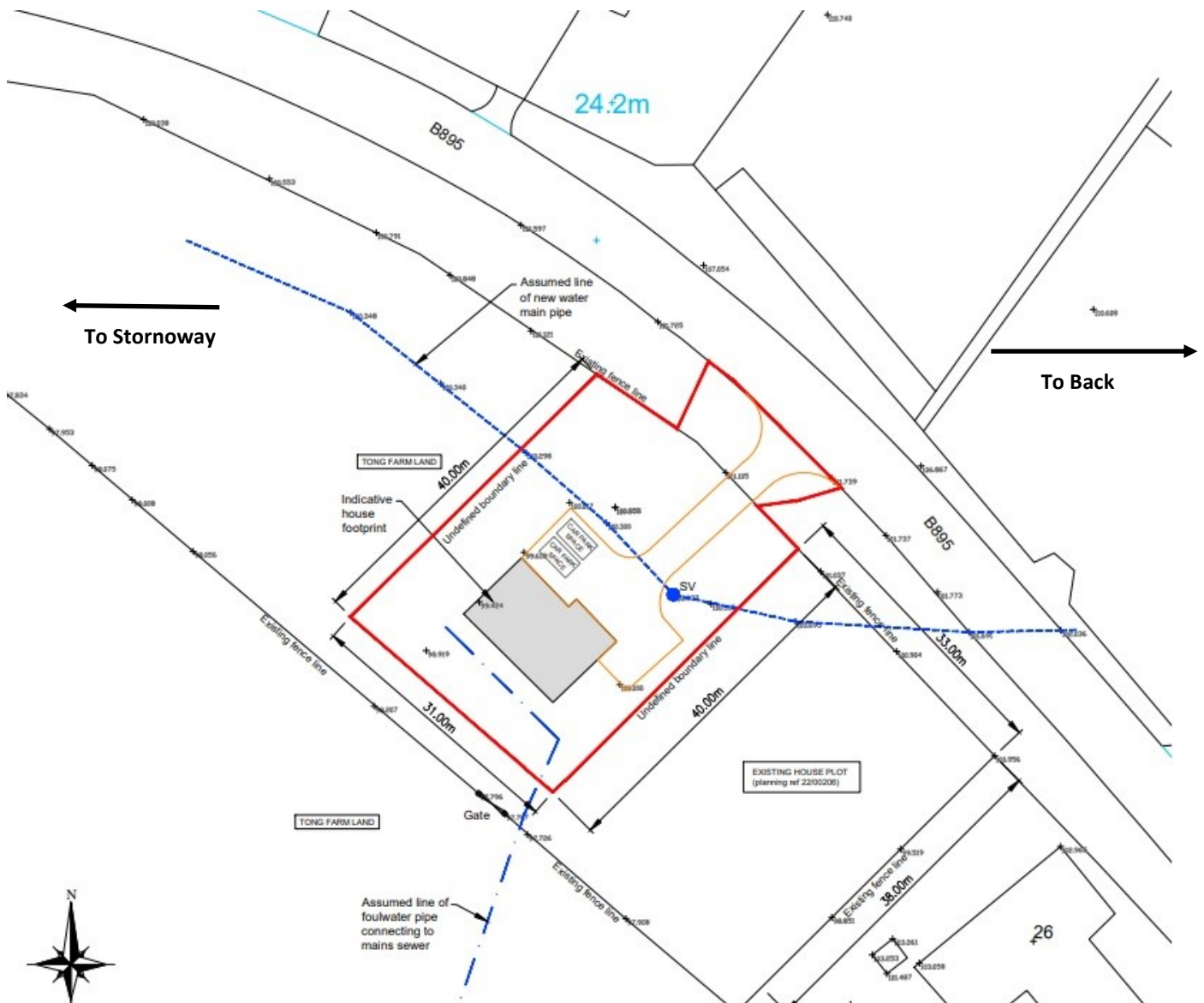
In the increasingly desirable area for building, we are delighted to offer for sale the vacant plot numbered 28 Tong Road. The popular spot boasts uninterrupted views towards Stornoway and has a great viewpoint for both sunsets and sunrises. The welcoming community of Tong creates an ideal location for building a family home with the local primary school being within walking distance but also close enough to Stornoway that it opens up schooling options. An added advantage is the outline planning permission which has been obtained and remains valid, relevant documents can be provided upon request. Situated approximately 3 miles from Stornoway town centre where all local amenities can be found such as supermarkets, shops, hospital and secondary school.

The demand for this area is high so we recommend that any interest parties act promptly.

Offers over £30,000

Directions

Travelling out of Stornoway town centre passing Laxdale Primary School take the second turning to your right, sign posted for Tolstadh and travel along this road for approximately 2 miles until you reach the village of Tong. Plot 28 is located on your right just before the row of properties.



General: Whilst we endeavour to make these particulars as accurate as possible they are set out as a guide only and are not guaranteed. All measurements are approximate and are intended for general guidance only. Room sizes are taken with a digital/sonic-measuring device and are taken to the widest point. We have not tested the services or any of the equipment or appliances in the property we strongly advise prospective buyers to commission their own survey or service reports before finalising their offer to purchase. THESE PARTICULARS ARE ISSUED IN GOOD FAITH BUT DO NOT CONSTITUTE REPRESENTATIONS OF FACT OR FORM PART OF ANY OFFER OR CONTRACT. THE PARTICULARS SHOULD BE INDEPENDENTLY VERIFIED BY PROSPECTIVE BUYERS OR TENANTS.

NO PERSON IN THIS FIRMS EMPLOYMENT HAS THE AUTHORITY TO MAKE OR GIVE ANY REPRESENTATION OR WARRANTY IN RESPECT OF THE PROPERTY.