

Flat 22, Imperial Court, 225 Streatham Road

£350,000 Leasehold



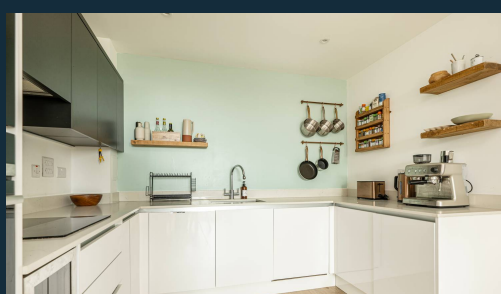
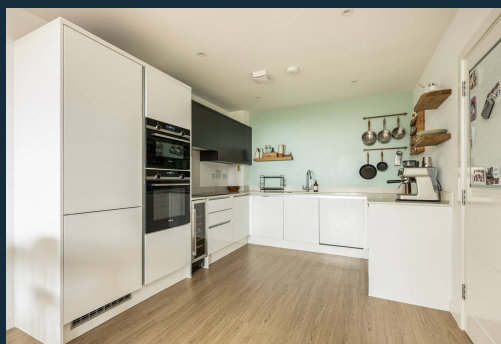
haboodle

This immaculately presented one bedroom property offers modern living within a thriving South London community. Nearby Streatham and Tooting transport links provide a convenient and short commute to Wimbledon, Clapham Junction and Central London. With immediate access to a wealth of good local shops, cafes and bars, this apartment combines convenience with high-spec luxury modern living.

On entering this third-floor apartment, the high quality and finish are immediately apparent. The spacious hallway with Karndean flooring provides direct access to the modern open-plan kitchen and lounge, bright double bedroom, and elegant contemporary bathroom. The open-plan lounge and kitchen area are light-filled, benefitting from direct access to the private balcony, which is perfect for enjoying the afternoon sunshine and evening sunsets. The contemporary kitchen units are complimented by stone worktops, adding a touch of luxury to this fully equipped kitchen, which features an integrated fridge freezer, built-in wine cooler, full-size integrated dishwasher and Siemens oven plus a

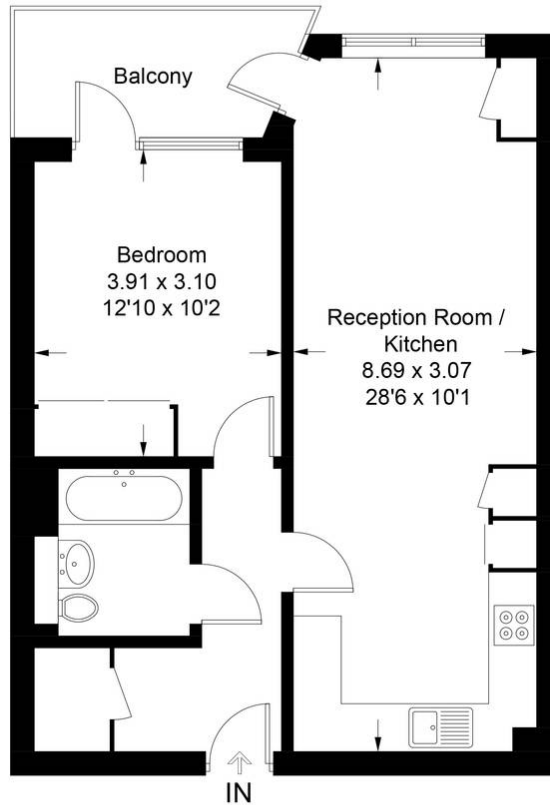


- › One Bedroom
- › Private Balcony
- › Modern Fitted Kitchen & Integrated Appliances
- › Gas Central Heating
- › Large Communal Garden
- › Bike Storage
- › Long Lease
- › Excellent EPC Rating
- › Superb Transport Links
- › Fantastic Local Amenities



Imperial Court - CR4

Approximate Gross Internal Area = 51.5 sq m / 554 sq ft



Third Floor

Illustration for identification purposes only, measurements are approximate, not to scale. Produced by Haboodle Estate Agents (ID1115503)



haboodle