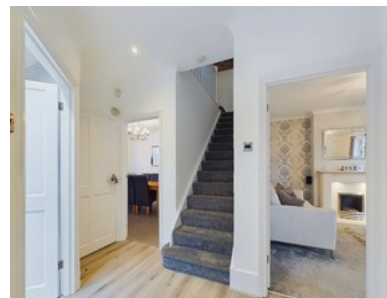
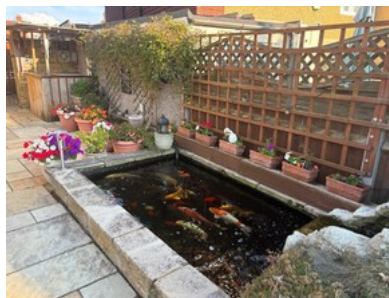


Cedar Avenue




CAPITAL
ESTATE AGENTS



- ✓ Four Bedroom Semi Detached Chalet Style Extended House With Alarm
- ✓ Stunning Contemporary Styled Kitchen
- ✓ Newly Carpeted Stairs And Landing-modern Decor Throughout
- ✓ Downstair Bathroom Completely Brand New
- ✓ Double Skinned Brick Built Stunning Summer House Which Is Sound Proofed With Bi Fold Doors And Alarm
- ✓ Ready To Move In
- ✓ Off Street Parking
- ✓ Additional Planning Permission Granted For Single Story Side Extension - Bexley Planning 22/02931/ful
- ✓ Situated In A Sought After Road Close To The Oval
- ✓ Freehold

Bedroom  4 Bathroom  2 Reception  1

£850,000