

S&B



3 Bedroom 1st Floor Edwardian Maisonette located in Kingston Upon Thames. OIEO £500,000 Leasehold/Share of Freehold

A spacious (979sq') and characterful 3 bed 1st floor Edwardian Maisonette with own private garden.

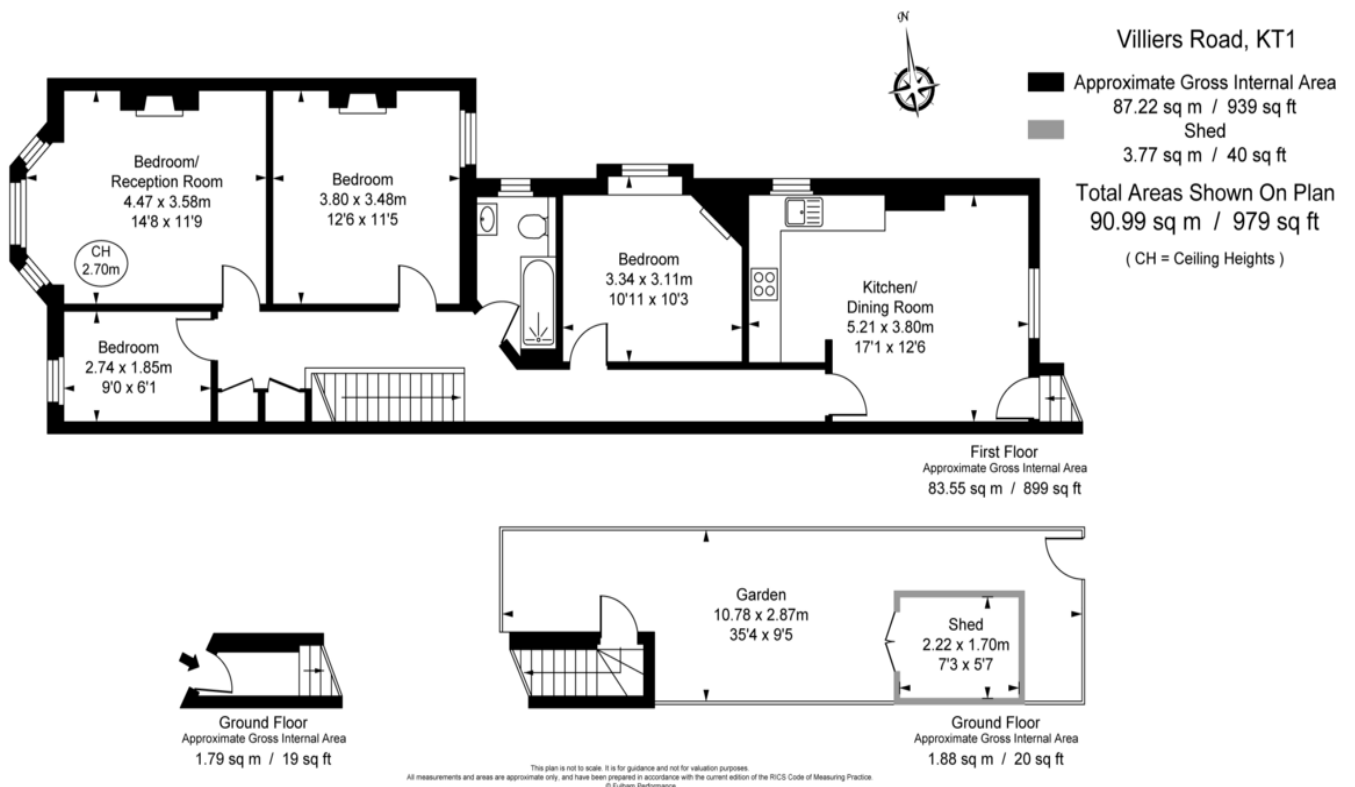
Situated in a sought after location within walking distance of both Surbiton and Kingston town centres with excellent schools and transport links.

Offering a modern fitted kitchen with fitted appliances, a modern white bathroom suite.
Recommended viewing, Sold with no onward chain

WWW.STACKANDBONNER.COM

020 8974 8844
sales@stackandbonner.com





- Three Bedrooms
- A Modern Fitted White Kitchen With Fitted Appliances
- A Modern Fitted White Bathroom Suite
- Many Character Features
- Private Rear Garden
- 979 Sq Ft ‘
- Lease: 977 Years Remaining
- Share Of Freehold