



Ye Olde Dairy, Bushey

£265,000- £335,000



# Welcome to Ye Olde Dairy

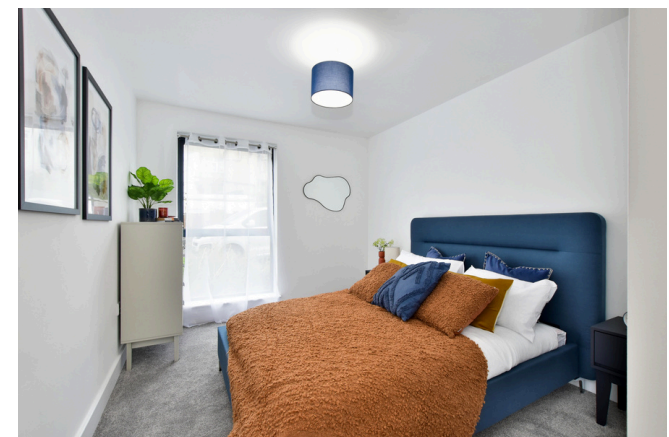
A new development of just 1 and 2 bedroom apartments ideally located just a few minutes walk from Bushey station. These spacious apartments have contemporary finishes throughout and many come with outside space. Originally an Old Dairy, these apartments have been thoughtfully designed to enjoy modern living with open plan rooms, stylish fully fitted kitchens, high quality specification and private outside space for that much needed time to relax outside in the comfort of your own home. Hidden away through a private entrance, this development of just 19 apartments is a hidden gem in the heart of Bushey.

Leasehold- lease length 250 years.

Service charge circa £1450 per annum for the 1 bedroom apartments.

Service charge circa £1800 per annum for the two bedroom apartments.

10 year Buildzone warranty.





# Ground floor



# First floor



# Second floor



# Third floor







# Area Information

This new development is ideally located just a few minutes walk from Bushey station and within easy access of Watford town centre. Fast London Northwestern trains from Bushey station take passengers to London Euston in under 20 minutes, making these apartments perfect for commuters. The overground line also runs through and provides easy access to many parts of the city.

Watford Town Centre has a variety of entertainment and retail options, including the Atria shopping centre, large Cineworld Imax cinema and a vibrant restaurant hub. There are also various sports facilities including golf, football, tennis and cricket and many leisure & health clubs close by. Notably, Watford is home to one of England's most luxurious golf courses, The Grove.

2 minute walk from Bushey station.

0.6 miles from Watford High Street station.

Less than a mile to Watford town centre.

Close to local amenities.





sewell &  
gardner

Contact Sewell & Gardner New Homes on 01923 606056 or [newhomes@sewellgardner.com](mailto:newhomes@sewellgardner.com)