

# The Poppy Orchard View

2-bedroom home, sleeps 4



2 | 

2 | 

1 | 



Artist's impression

## Key features

- Two double bedrooms
- Downstairs W.C.
- En-suite from master bedroom
- Open plan kitchen and dining room
- Separate living room



## The Poppy

Available plots

### Rent to Buy

20, 35, 329, 330, 376, 377

### Shared Ownership

18, 19, 22, 37, 328, 342, 343, 344, 345, 378, 379

### Outright Sale

21, 36

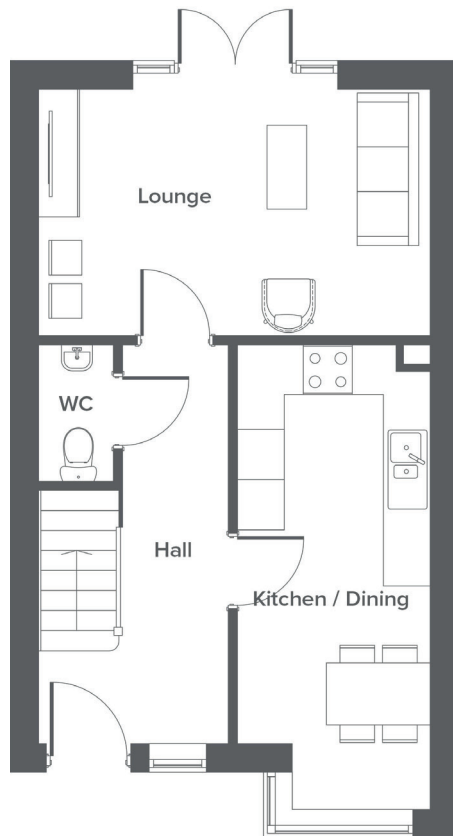
Hargreaves Road, Northwich, CW9 7BL

A selection of 2, 3 & 4-bedroom houses and one bedroom apartments

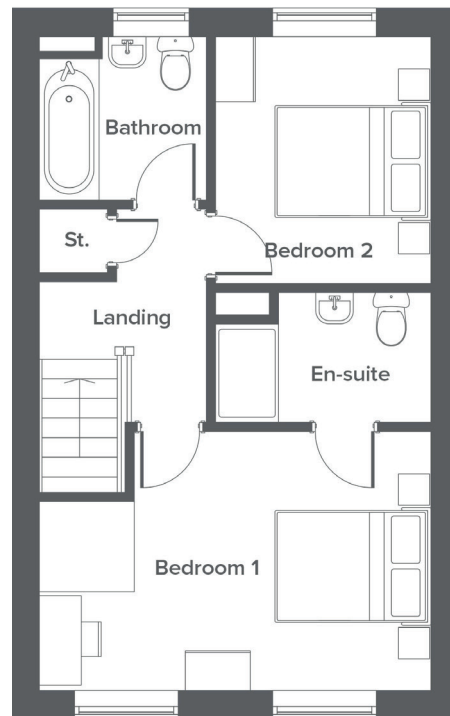
# The Poppy Orchard View

2-bedroom home, sleeps 4

Ground floor



First floor



Total size **72.46 m<sup>2</sup> / 780 ft<sup>2</sup>**

Ground Floor	Metric	Imperial
Kitchen / Dining	2.3 x 5.6	7'10" x 18'5"
Lounge	4.7 x 3.0	15'8" x 9'10"
WC	0.9 x 1.6	3'1" x 5'6"


First Floor	Metric	Imperial
Bedroom 1	4.7 x 3.1	15'8" x 10'4"
Bedroom 2	2.6 x 3.0	8'6" x 9'7"
Bathroom	2.0 x 2.5	6'9" x 8'5"
En-suite	2.6 x 1.6	8'8" x 5'3"

## Get in touch

 **01606 218072**

 **yourhousinggroup.co.uk**

 **yhgtv**

 **@yourhousing**

 **yourhousinggroup**