

DUNGANNON HOUSE

FULHAM • SW6



DUNGANNON HOUSE

FULHAM • SW6

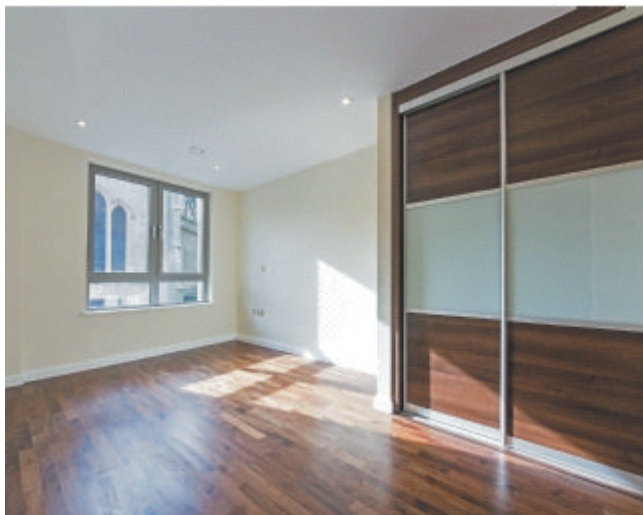
A stylish two bedroom apartment

2 bedrooms • 2 bathrooms • Reception room • Kitchen •
Parking

Chelsea Reach is situated on Vanston Place, moments from
the local amenities of Fulham Broadway and Fulham
Broadway Underground Station (District Line).

These particulars are intended only as a guide and must not be relied
upon as statements of fact. Your attention is drawn to the Important Notice on
the last page of the text.





ACCOMODATION

A brand new two bedroom, two bathroom stylish apartment available to rent in Fulham's newest development, Chelsea Reach SW6. A south-west facing apartment situated on a quiet street on the first floor with double glazed windows, wooden floors and underfloor heating throughout. The property comprises of a fully equipped open plan kitchen with superb storage, spacious reception, master bedroom with ensuite shower room and built in storage, further double bedroom with built in storage and a further bathroom with heated walls. The property further benefits from video phone entry, 24 hour porter and 1 parking space. Prior to the tenancy blinds (colour to be chosen by the tenant) and a bathroom screen will be installed. The heating and hot water charges are included in the rent. EPC rating B.

TERMS

Unfurnished

GUIDE PRICE

£595 per week

LOCAL AUTHORITY

Hammersmith and Fulham

VIEWINGS

By appointment with Knight Frank Fulham 020 7751 2410

All potential tenants should be advised that, as well as rent, an administration fee of £276 will apply when renting a property. Please ask us for more information about other fees that may apply or visit [KnightFrank.co.uk/tenantcharges](https://www.knightfrank.co.uk/tenantcharges)

Dungannon House,
 Vanston Place,
 Fulham, SW6 1AY
 Approximate Gross Internal Area
 824 sq ft / 76.55 sq m



First Floor

ILLUSTRATION FOR IDENTIFICATION PURPOSES ONLY

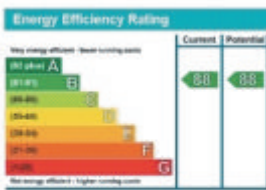
ALL MEASUREMENTS ARE MAXIMUM, AND INCLUDE WINDOW BAYS AND WARDROBES WHERE APPLICABLE
 THIS PLAN MUST NOT BE REPRODUCED BY ANY OTHER PERSON WITHOUT PERMISSION



020 7751 2410

203 New Kings Road
 London SW6 4SR

fulhamlettings@knightfrank.com



Important Notice 1. Particulars: These particulars are not an offer or contract, nor part of one. You should not rely on statements by Knight Frank LLP in the particulars or by word of mouth or in writing ("information") as being factually accurate about the property, its condition or its value. Neither Knight Frank LLP nor any joint agent has any authority to make any representations about the property, and accordingly any information given is entirely without responsibility on the part of the agents, seller(s) or lessor(s). 2. Photos etc: The photographs show only certain parts of the property as they appeared at the time they were taken. Areas, measurements and distances given are approximate only. 3. Regulations etc: Any reference to alterations to, or use of, any part of the property does not mean that any necessary planning, building regulations or other consent has been obtained. A buyer or lessee must find out by inspection or in other ways that these matters have been properly dealt with and that all information is correct. 4. VAT: The VAT position relating to the property may change without notice. Particulars dated May 2015. Photographs dated October 2013. Knight Frank LLP is a limited liability partnership registered in England with registered number OC305934. Our registered office is 55 Baker Street, London, W1U 8AN, where you may look at a list of members' names.