



Park East Building, Bow Quarter, Fairfield Road, Bow

London

£400,000

OLIVER *OJ* JAUQUES  
EST. 1986



# Flat 28 Park East Building

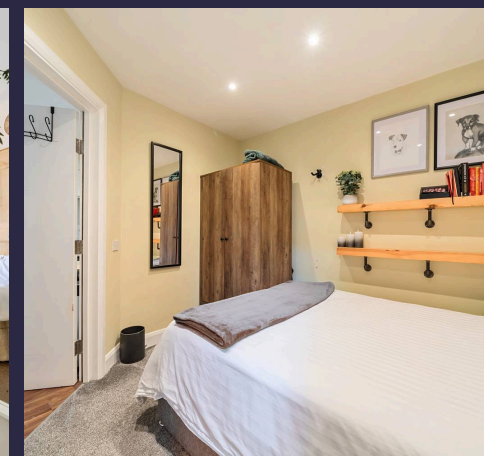
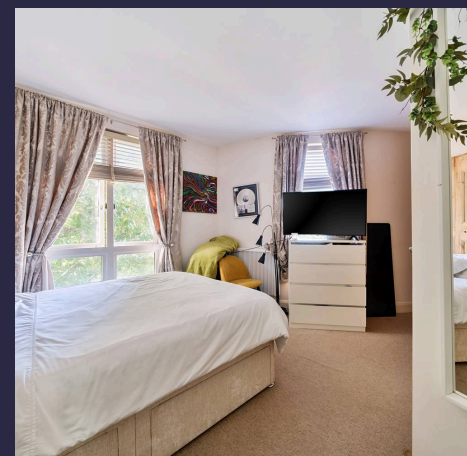
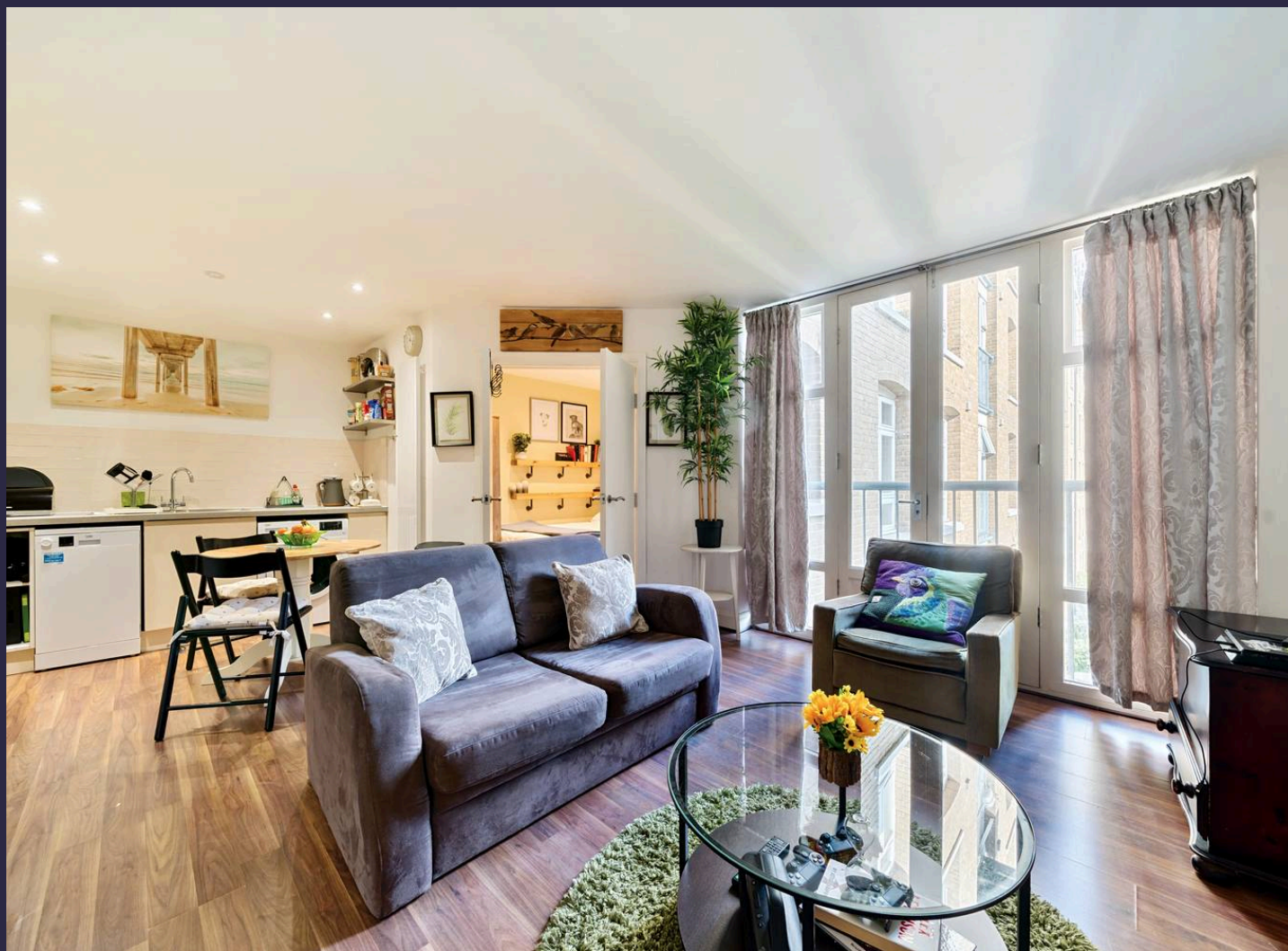
Bow Quarter, London

BOW QUARTER A well presented two bedroom apartment located in the East of London within the Historical Bow Quarter Development. The property includes modern fixtures and is a must view! Bow Quarter is conveniently located with Bow Church Station (DLR) just 0.4 miles away and Bow Road Station (District/Hammersmith and City) 0.6 miles.

Council Tax band: D

EPC Energy Efficiency Rating: D

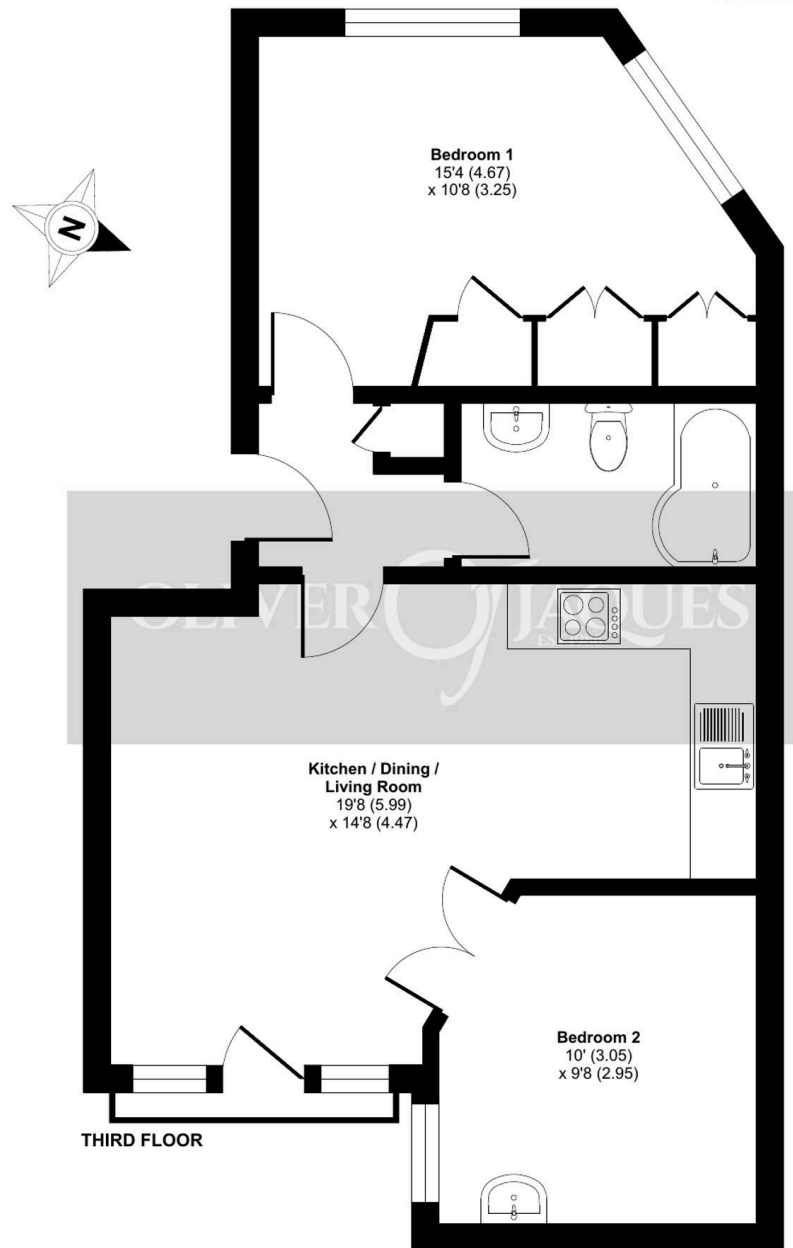
- Historical Bow Quarter Development
- Impressive Two Bedroom Apartment
- 24 Hour Concierge and Stunning Facilities Including a Residents Swimming Pool and Gymnasium
- Allocated Parking Space
- Beautiful Landscaped Grounds, On Site Coffee Shop and Convenience Store
- 0.4 Miles to Bow Church Station (DLR) & 0.6 Miles to Bow Road Station (District/Hammersmith and City)
  
- Tenure - Leasehold - 89 years remaining on lease
- Ground Rent £125.00
- Service and Management charges  
Estate Contribution charge £2,211.42  
Management Fee £48.00  
Park East Service Charge £1,291.20  
Park East Reserve Fund £129.00



# Fairfield Road, London, E3

Approximate Area = 568 sq ft / 52.7 sq m

For identification only - Not to scale



Floor plan produced in accordance with RICS Property Measurement Standards incorporating International Property Measurement Standards (IPMS2 Residential). © nchecon 2024. Produced for Oliver Jaques. REF: 1175282





## Oliver Jaques Bow

Oliver Jaques Estate Agents Ltd, Unit A Arlington Building - E3 2UB

02089800999 • [East@o-j.co.uk](mailto:East@o-j.co.uk) • [o-j.co.uk/](http://o-j.co.uk/)