

Crucible Homes



Progress Drive
Rotherham, S66 1TT

£230,000

Overview

Stylish & Modern Townhouse

Three Bedrooms

Popular location

Spacious garden

Close to local amenities

Catchment area for Wickersley School

Council Tax band – C

EPC -



Description

Crucible Homes are pleased to present this Stunning 3-Bedroom Townhouse for Sale.

Welcome to your future home! This beautifully designed 3-bedroom townhouse offers modern living with all the comforts and conveniences for a growing family or those looking for extra space. Situated in a prime location, this property combines stylish finishes with practical layout features, and functionality.

Property Features:

Living over 3 floors

Bedrooms: 3 spacious bedrooms,

Bathrooms: 3 bathrooms, including a master ensuite and downstairs WC

Living Areas: Bright and airy open-plan living/dining room

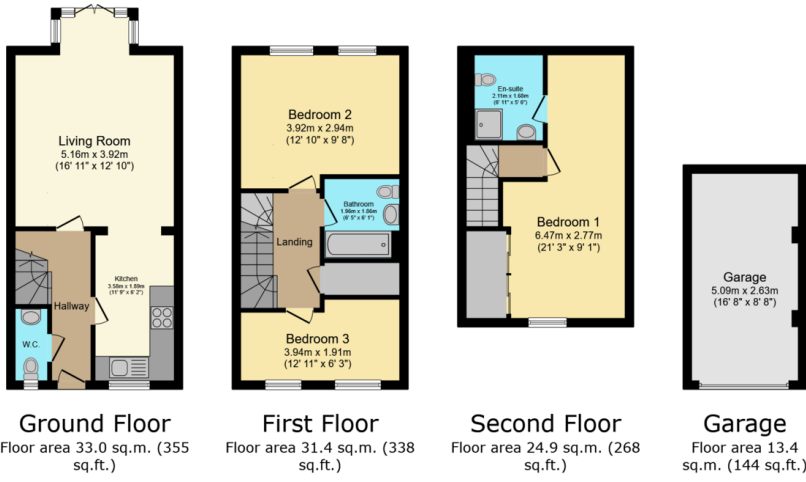
Kitchen: Contemporary kitchen with ample storage

Parking: Driveway and Secure garage

Outdoor: Private garden, perfect for entertaining or relaxing

Don't miss out on this charming family home. To arrange a viewing please call us 01709 500333





TOTAL: 102.6 sq.m. (1,105 sq.ft.)

This floor plan is for illustrative purposes only. It is not drawn to scale. Any measurements, floor areas (including any total floor area), openings and orientations are approximate. No details are guaranteed, they cannot be relied upon for any purpose and do not form any part of any agreement. No liability is taken for any error, omission or misstatement. A party must rely upon its own inspection(s). Powered by www.Propertybox.io



