



7 Quinta Close, Torquay - TQ1 3RW

Guide Price £320,000





7 Quinta Close

Torquay, Torquay

A three bedroom semi-detached family style home located in the highly sought after area of Babbacombe with ample off road parking and a generous sized garden.

Council Tax band: D

Tenure: Freehold

EPC Energy Efficiency Rating: C

EPC Environmental Impact Rating: D

- Highly sought after area near to Babbacombe Downs and local schools
- No onward chain
- A well presented family style home
- Generous sized gardens with patio area and a large level lawn
- Light and airy accommodation throughout
- Double width driveway for 2 cars and single garage in a nearby block
- Three bedrooms
- Good sized kitchen/breakfast room with a separate utility
- Popular cul-de-sac position
- Family bathroom and separate WC



7 Quinta Close

Torquay, Torquay

The property is situated in an enviable position within close proximity to Walls Hill, Cary Arms Restaurant and Spa and the southerly facing Babbacombe Downs with its striking views of the sea towards Lyme Bay. Babbacombe is a popular location due to its natural beauty and array of high quality shops, restaurants and amenities. With the quaint precinct of St Marychurch Close by and great access in and out of Torquay via the coastal road towards Shaldon and Teignmouth and the South Devon Highway which connects the bay to Newton Abbot and Exeter (M5 and beyond).

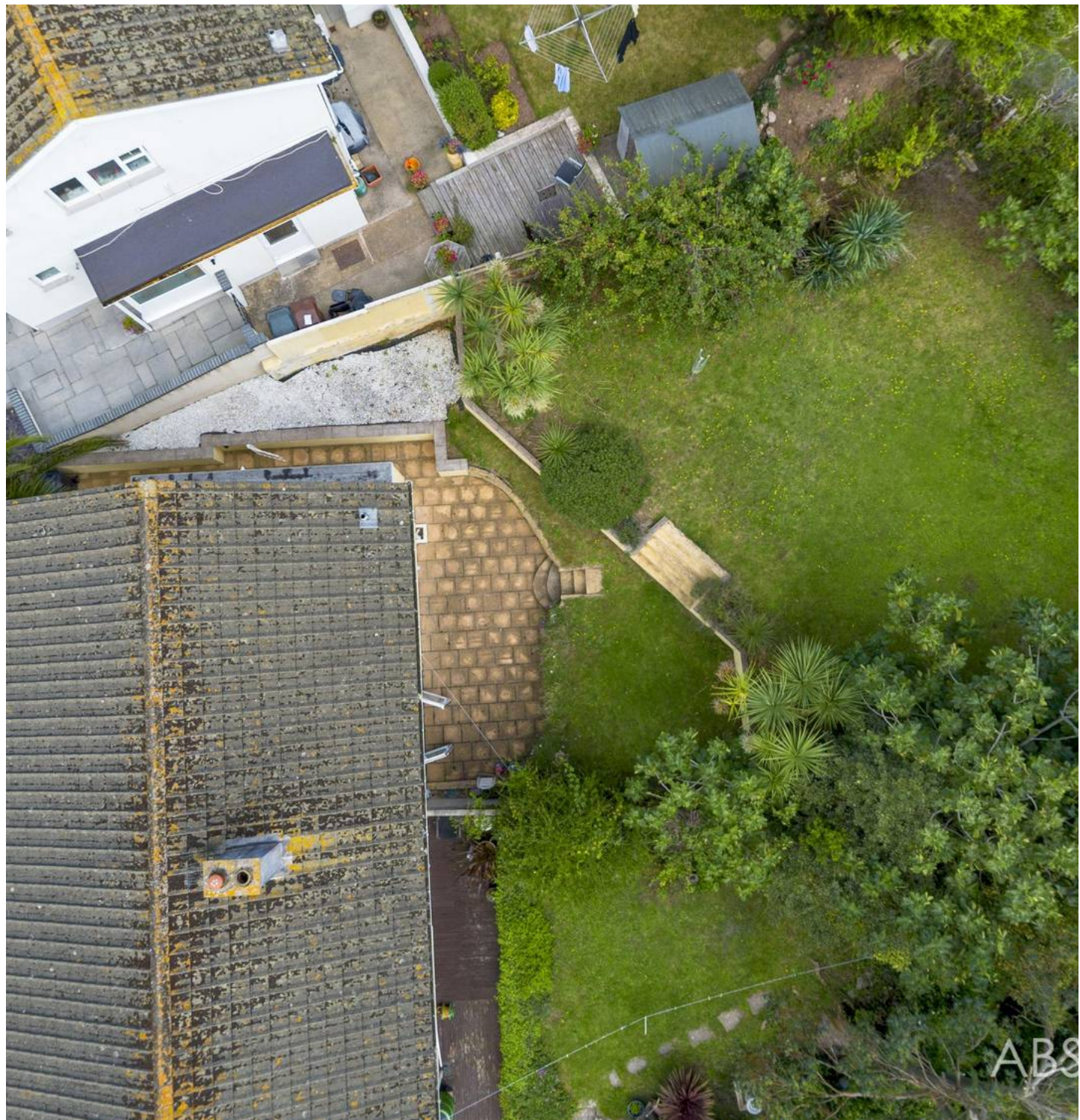
Absolute Sales & Lettings

Absolute Sales & Lettings Ltd, 13 Ilsham Road - TQ1 2JG

01803 214214

torquay@movewithabsolute.co.uk

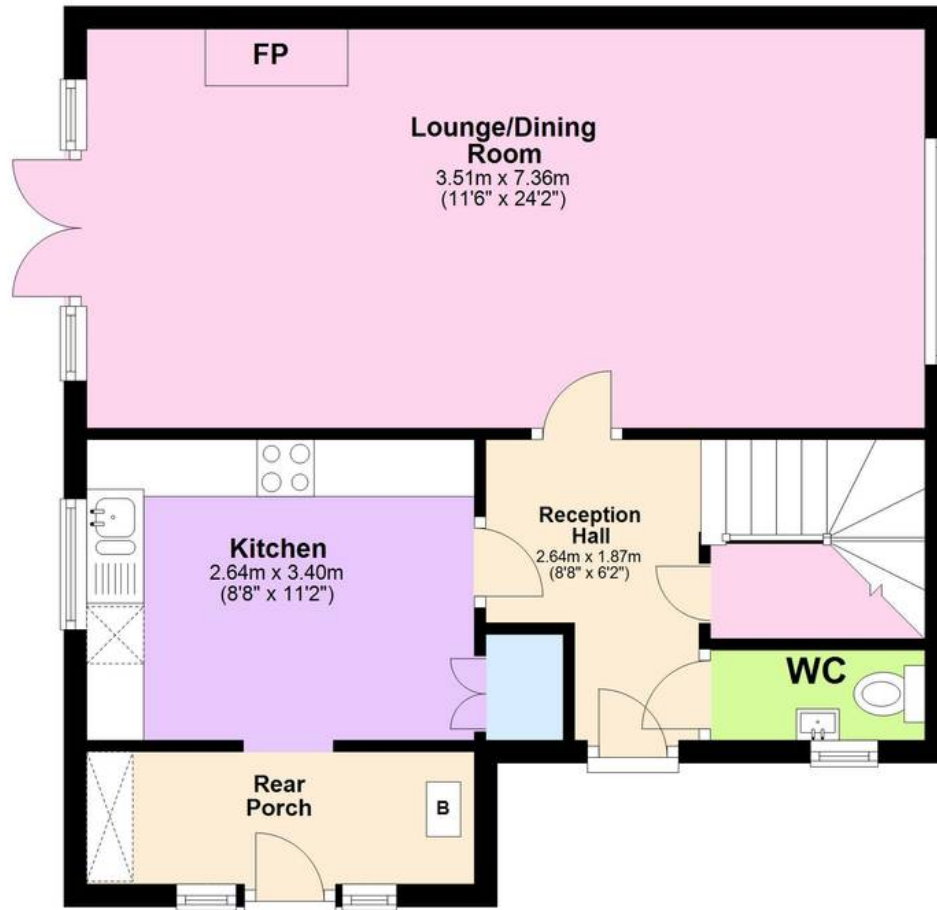
movewithabsolute.co.uk/



ABS

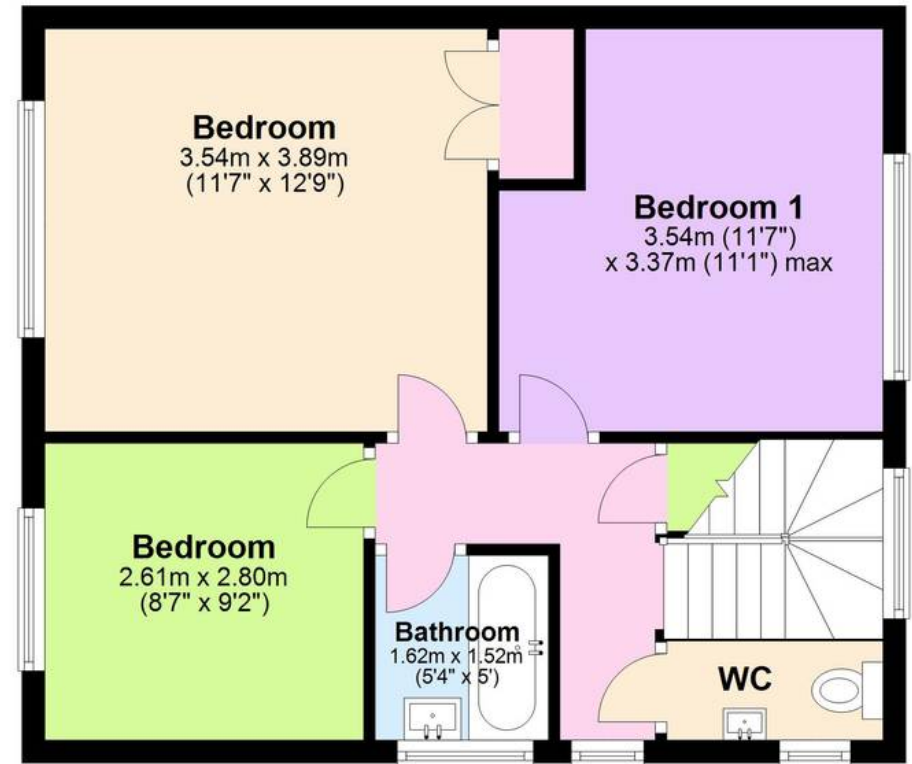
Ground Floor

Approx. 50.3 sq. metres (541.0 sq. feet)



First Floor

Approx. 46.0 sq. metres (494.8 sq. feet)



Total area: approx. 96.2 sq. metres (1035.8 sq. feet)

Approx
Plan produced using PlanUp.

7 Quinta Close, Torquay