

Intelligent technology, everywhere.

strata

KUDOS

Plot 520, York Road, Leeds, LS14 6FU



Intelligent home

It's still the Geneva as you know it, the first ever Strata design and still one of our most popular homes, but this Geneva has some very exciting features including new technology, materials and methodologies.

1,273

Square foot home

120

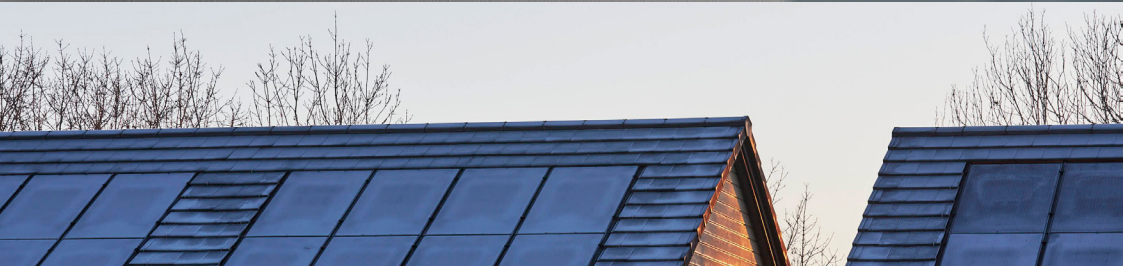
Square meter garden

£19,090

Worth of interior designed upgrades



wondrwall®

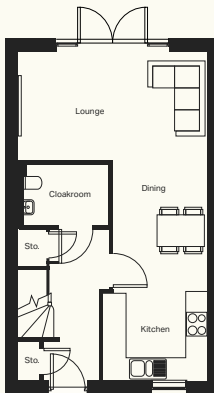


Included intelligent technology

State of the art Air Source Heat Pump system which is up to 4 times more efficient than a traditional gas boiler meaning an EPC rating of 'A'

Full Solar PV Panels & Battery enables generation and storage of electricity and assists utilisation of agile energy tariffs

Overall reduction in annual electric energy bills plus no gas = **no gas bill!**



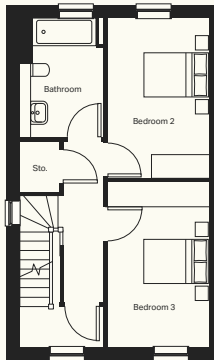
Ground floor

Kitchen (max)
2738mm x 2330mm

Dining (max)
2479mm x 3397mm

Lounge (max)
4925mm x 2839mm

Cloakroom (max)
2380mm x 1563mm

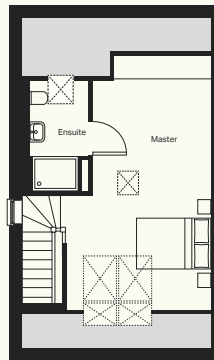


First floor

Bedroom 2
2675mm x 4166mm

Bedroom 3
2675mm x 4311mm

Bathroom (max)
2185mm x 3101mm



Second floor

Master bedroom (max)
3826mm x 5643mm

Ensuite (max)
1733mm x 2876mm

Upgrades

KITCHEN DOOR	Cubanit Grey Wood Grain	WARDROBES	Bed 1- Davos Oak
KITCHEN WORKTOP	Light Grey Valmisino Marble		Bed 2- Light Grey
KITCHEN MISC.	Full Height Splashback Haier Double Oven Induction Hob Washer/Dryer Dishwasher Wine Cooler Under Unit Lighting		Bed 3- Black
		OTHER	White Spotlight Package External Socket External Security Light Alarm Turf Outside Tap
BATHROOM MISC.	LED Mirror to Bathroom and En-Suite Large Towel Warmer to Bathroom and En-Suite Shower Over Bath in Bathroom Half Height Tiling to Bathroom with Chrome Trim Full Height Tiling to En-Suite with Chrome Trim		
FLOORING	Stairs, Landing and Bed 1- York Saxony 404 Kitchen/Diner, Lounge, Bed 3 and Hallway - Driftwood Oak		





The logo for strata, featuring the word "strata" in white lowercase letters on a red square background.

“

We're not just a homebuilder, we're a family of like-minded individuals who are committed to delivering beautiful homes and meaningful communities that are both sustainable and affordable. We're a family-run business with over a century of rich history, and we're believers in change.

We believe that while homes may be our legacy, it is the people who live in them that truly matter to us. In putting people at the heart of what we do, we can ensure that as a team we are designing homes that are mindful of the planet and its resources, while creating healthy, inclusive and resilient communities that can in turn improve the lives of generations to come.

