

Compton

Clerkenwell

The Market Building
72-82 Rosebery Avenue
EC1R 4RW

New 4th floor office available for rent in the heart of Clerkenwell, with incredible views over London.

For Rent
1,509 ft²

020 7101 2020
compton.london

For Rent
FULLY FITTED OFFICE SPACE
AVAILABLE
SECURE WORKING
SINCE 1852

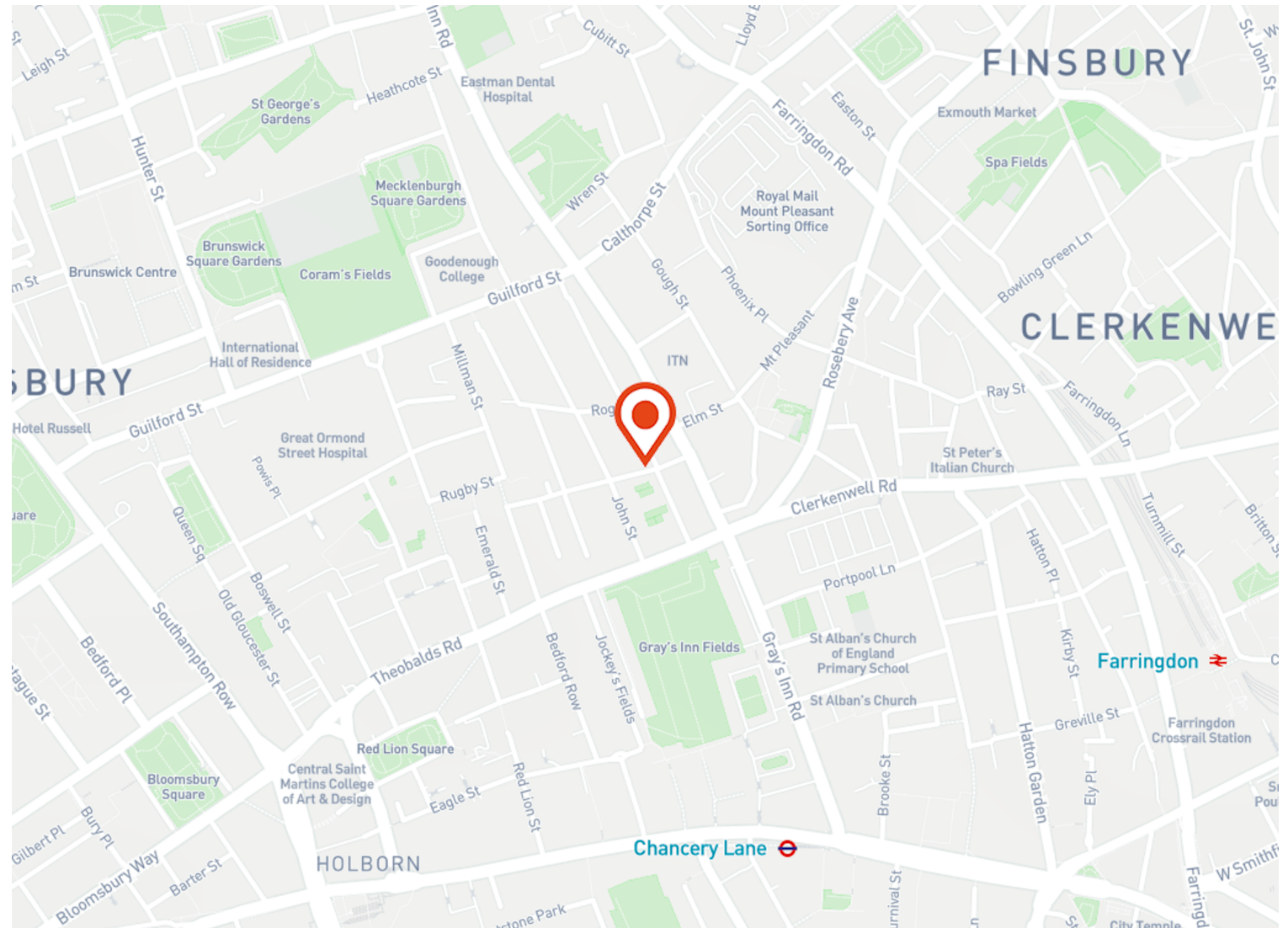
Compton

Clerkenwell

The Market Building
72-82 Rosebery Avenue
EC1R 4RW

New 4th floor office available for rent in the heart of Clerkenwell, with incredible views over London.

For Rent
1,509 ft²



Location

The Market Building sits proudly on the corner of Rosebery Avenue and Tysoe Street, which leads into Exmouth Market, home to a daily street food market as well as a plethora of restaurants, pubs & cafés. The market itself has become a destination within Clerkenwell attracting a wide variety of people from across the district.

Compton

Clerkenwell

The Market Building
72-82 Rosebery Avenue
EC1R 4RW

New 4th floor office available for rent in the heart of Clerkenwell, with incredible views over London.

For Rent
1,509 ft²



Compton

Clerkenwell

The Market Building
72-82 Rosebery Avenue
EC1R 4RW

New 4th floor office available for rent in the heart of Clerkenwell, with incredible views over London.

For Rent
1,509 ft²



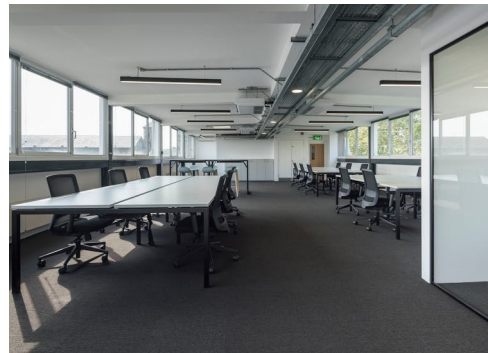
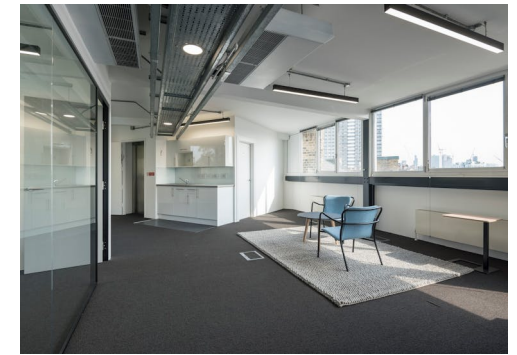
Compton

Clerkenwell

The Market Building
72-82 Rosebery Avenue
EC1R 4RW

New 4th floor office available for rent in the heart of Clerkenwell, with incredible views over London.

For Rent
1,509 ft²



Compton

Clerkenwell

The Market Building
72-82 Rosebery Avenue
EC1R 4RW

New 4th floor office available for rent in the heart of Clerkenwell, with incredible views over London.

For Rent

1,509 ft²

Amenities

- Can be offered fully fitted by the Landlord
- Located next to Exmouth Food Market
- Great floor to ceiling height
- Fantastic natural light
- Excellent views across London
- Meeting room already installed
- Comfort cooling
- Entry phone system
- Passenger lift
- Communal shower
- Communal WC's & Private WC on 4th floor
- 24-hour access

Description

A brilliant 4th-floor office is now available for rent in the heart of Clerkenwell, offering spectacular panoramic views across London.

The space is housed in a characterful building with an exterior brickwork façade and classic Victorian-style sash windows, blending historic charm with modern functionality.

This unique office provides an inspiring work environment, ideal for creative or professional businesses looking for a prime location in one of London's most vibrant areas. Don't miss the opportunity to secure this exceptional office space.

Compton

Clerkenwell

The Market Building
72-82 Rosebery Avenue
EC1R 4RW

New 4th floor office available for rent in the heart of Clerkenwell, with incredible views over London.

For Rent

1,509 ft²

Content

[View in Virtual Reality](#)



[View on Website](#)



Developer

Private

Tenure

Leasehold

Lease Term

New full repairing & insuring lease available for a term by arrangement direct from the Landlord

VAT

The property is elected for VAT

Legal Costs

Each party to be responsible for its own legal and all other professional costs incurred in the transaction

Local Authority

The London Borough of Islington

Compton

Clerkenwell

The Market Building
72-82 Rosebery Avenue
EC1R 4RW

New 4th floor office available for rent in the heart of Clerkenwell, with incredible views over London.

For Rent

1,509 ft²

Floor Areas & Outgoings

The accommodation comprises of the following:

Name	sq ft	Rent	Rates Payable	Service charge	Total month	Total year	Availability
4th	1,509	£49.50 /sq ft	£19.36 /sq ft	£5.50 /sq ft	£9,350.77	£112,209.24	Available

Compton

Contact Us

All appointments to view must be arranged via sole agents, Compton, through —

Andy Gilbert
ag@compton.london
07833993714

Alex Sugar
as@compton.london
07585 793 379

Jake Kinsler
jk@compton.london
07840 638668

