

EST 1770



# Longstaff<sup>.COM</sup>

SPALDING RESIDENTIAL: 01775 766766 [www.longstaff.com](http://www.longstaff.com)



## Kingston Cottage Homes, 7 South Parade, Spalding PE11 2YJ

**£115,000 Freehold**

- Delightful Edwardian Property
- Communal Gardens
- Convenient Town Location
- Double Bedroom, Lounge, Kitchen, Bathroom
- Grade II Listed

CASH BUYER sought for this delightful Edwardian property with extensive character, situated in a central town location. Entrance lobby, lounge, kitchen, rear lobby and bathroom to the ground floor; bedroom to the first floor. Communal Gardens. No Chain.

SPALDING 01775 766766 GRANTHAM 01476 565371 BOURNE 01778 420406

ESTATE AGENTS ~ VALUERS ~ AUCTIONEERS ~ SURVEYORS ~ LETTINGS ~ RESIDENTIAL ~ COMMERCIAL ~ AGRICULTURAL



Shared fore garden which is laid to tarmac with central shrub border. Arched stone entrance leading to a solid wooden glazed door, leading into the entrance lobby.

#### **ENTRANCE LOBBY**

3' 11" x 3' 9" (1.20m x 1.15m) With skimmed ceiling, centre light point, smoke alarm, electric consumer unit, coat rail, stairs leading off to first floor landing.

#### **LOUNGE**

11' 9" x 16' 11" (3.59m x 5.17m) With window to the front elevation, further secondary double glazing unit, skimmed and coved ceiling with centre light point, picture rail, single radiator, glazed window to the rear elevation with secondary glazed unit, door off leading to under stairs storage cupboard with window to the rear elevation and shelving. Fitted gas fire (obsolete) with wooden mantle, bespoke fitted units into recess.

#### **KITCHEN**

8' 3" x 10' 1" (2.52m x 3.08m) With wooden glazed window to the side elevation, secondary double glazed unit, skimmed ceiling with centre strip lighting, fitted with a range of base and eye level units with preparation surfaces over tiled splash



backs, stainless steel sink with taps, space for washing machine, single radiator.

#### **REAR LOBBY**

3' 8" x 3' 6" (1.13m x 1.07m) With wooden glazed door to the side elevation, fitted storage cupboard with lighting and shelving, door off leading into:

#### **BATHROOM**

4' 9" x 7' 10" (1.47m x 2.41m) With wooden obscured glazed window to the rear elevation, skimmed ceiling with centre light point, loft access, extractor fan, single radiator, three pieces suite including bath, wash hand basin with splash backs, high rise toilet.

#### **FIRST FLOOR LANDING**

Skimmed ceiling with centre light point, wooden glazed window to the rear elevation with secondary glazed unit, door off leading into:

#### **BEDROOM**

12' 6" x 15' 2" (3.83m x 4.63m) With glazed window to the front elevation, secondary glazed unit, skimmed ceiling with centre light point, loft access, double radiator, storage cupboard off/walk in wardrobe with hanging rail and shelving, further storage cupboard off into recess housing hot water cylinder with slatted shelving.

To the rear of the property is a further communal tarmac area with washing lines.

#### **AGENTS NOTE**

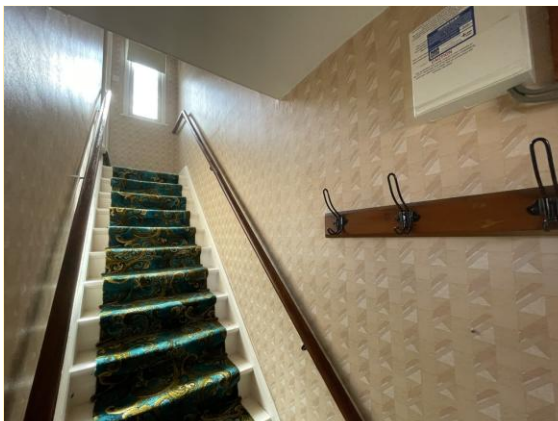
The property is Grade II Listed. We are advised there is a right of way over No. 9 for the benefit of No. 7.

#### **DIRECTIONS**

From Spalding proceed in a westerly direction along Winsover Road turning left at the traffic lights into St. Thomas Road. Take the fourth right hand turning into Regent Street and at the end turn left into South Parade and the property is on the left hand side.

#### **AMENITIES**

The town centre is within easy walking distance and offers a full range of shopping, banking, leisure, commercial, educational and medical facilities along with bus and railway stations. Peterborough is 18 miles to the south and has a fast train link with London's Kings Cross minimum journey time 49 minutes.



**TENURE** Freehold

**SERVICES** All Mains

**COUNCIL TAX BAND** A

**LOCAL AUTHORITIES**

South Holland District Council 01775 761161  
Anglian Water Services Ltd. 0800 919155  
Lincolnshire County Council 01522 552222

**PARTICULARS CONTENT**

R. Longstaff & Co LLP, their dlients and any joint agents accept no responsibility for any statement that may be made in these particulars. They do not form part of any offer or contract and must not be relied upon as statements or representations of fact. They are not authorised to make or give any representations or warranties in relation to the property either here or elsewhere, either on their own behalf or on behalf of their dient(s) or otherwise. All areas, measurements or distances are approximate. Floor plans are provided for illustrative purposes only and are not necessarily to scale. All text, photographs and plans are for guidance only and are not necessarily comprehensive. It should not be assumed that the property has all necessary planning, building regulation or other consents, and no guarantee is given for any apparatus, services, equipment or facilities, being connected nor in working order. Purchasers must satisfy themselves of these by inspection or otherwise.

**Ref: S11546**

Viewings are to be arranged by prior appointment. We make every effort to produce accurate and reliable details but if there are any particular points you would like to discuss prior to making your inspection, please contact our office. We suggest you contact us to check the availability of this property prior to travelling to the area in any case.

**ADDRESS**

R. Longstaff & Co LLP.  
5 New Road  
Spalding  
Lincolnshire  
PE11 1BS

**CONTACT**

Score	Energy rating	Current	Potential
92+	A		
81-91	B		84 B
69-80	C		
55-68	D		
39-54	E	54 E	
21-38	F		
1-20	G		