



Bushmills Ginnel, Western Gate, Marlborough Road

Swindon

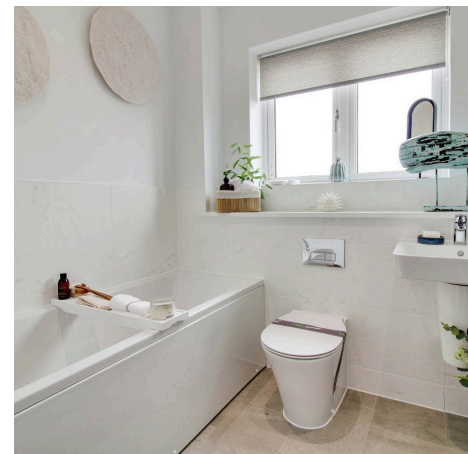
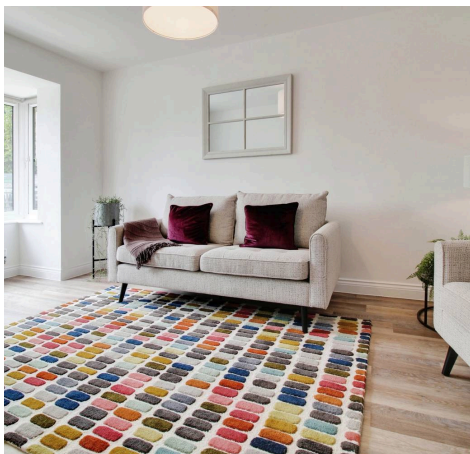
£295,000



Bushmills Ginell, Western Gate

Marlborough Road, Swindon

Introducing this fabulous new terraced house coming your way! Boasting two generous bedrooms, this charming abode offers you the ultimate comfort and convenience. Step into a large living room, perfect for cosy movie nights or entertaining friends. The kitchen/dining room is a chef's dream, with modern appliances and plenty of space to whip up your favourite meals. French doors lead you to the garden, where you can enjoy your morning coffee or dine al fresco on warm summer evenings. Upstairs, you'll find two generous double bedrooms, providing a peaceful retreat after a long day. The family bathroom is well-appointed, ensuring you have everything you need within reach. With two designated parking spaces and ample storage throughout, this new home is ready for you to move in and start creating unforgettable memories.



- NEW HOME
- READY TO MOVE INTO DEC 2024
- KITCHEN/DINING ROOM
- FRENCH DOORS TO KITCHEN
- TWO GENEROUS DOUBLE BEDROOMS
- FAMILY BATHROOM
- TWO PARKING SPACES
- AMPLE STORAGE THROUGHOUT

Hall

Living

13' 5" x 10' 0" (4.09m x 3.04m)

Kitchen

13' 7" x 6' 5" (4.15m x 1.95m)

Dining

7' 10" x 6' 10" (2.39m x 2.08m)

WC

First Floor Landing

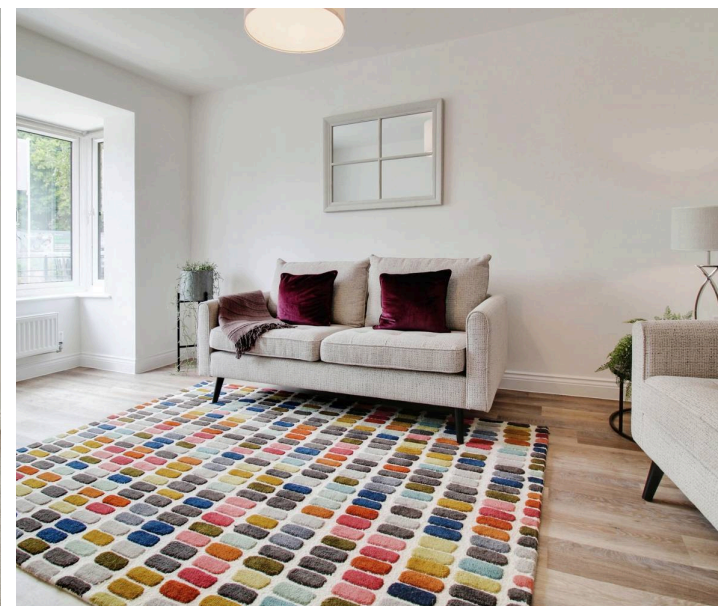
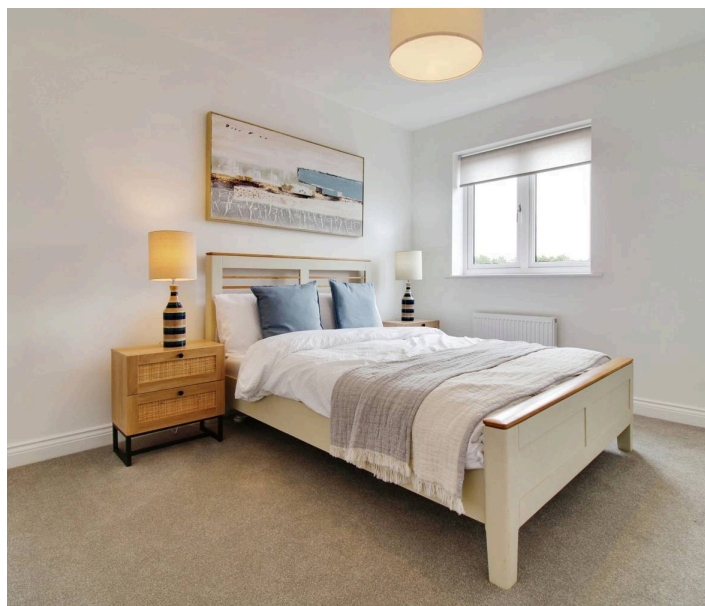
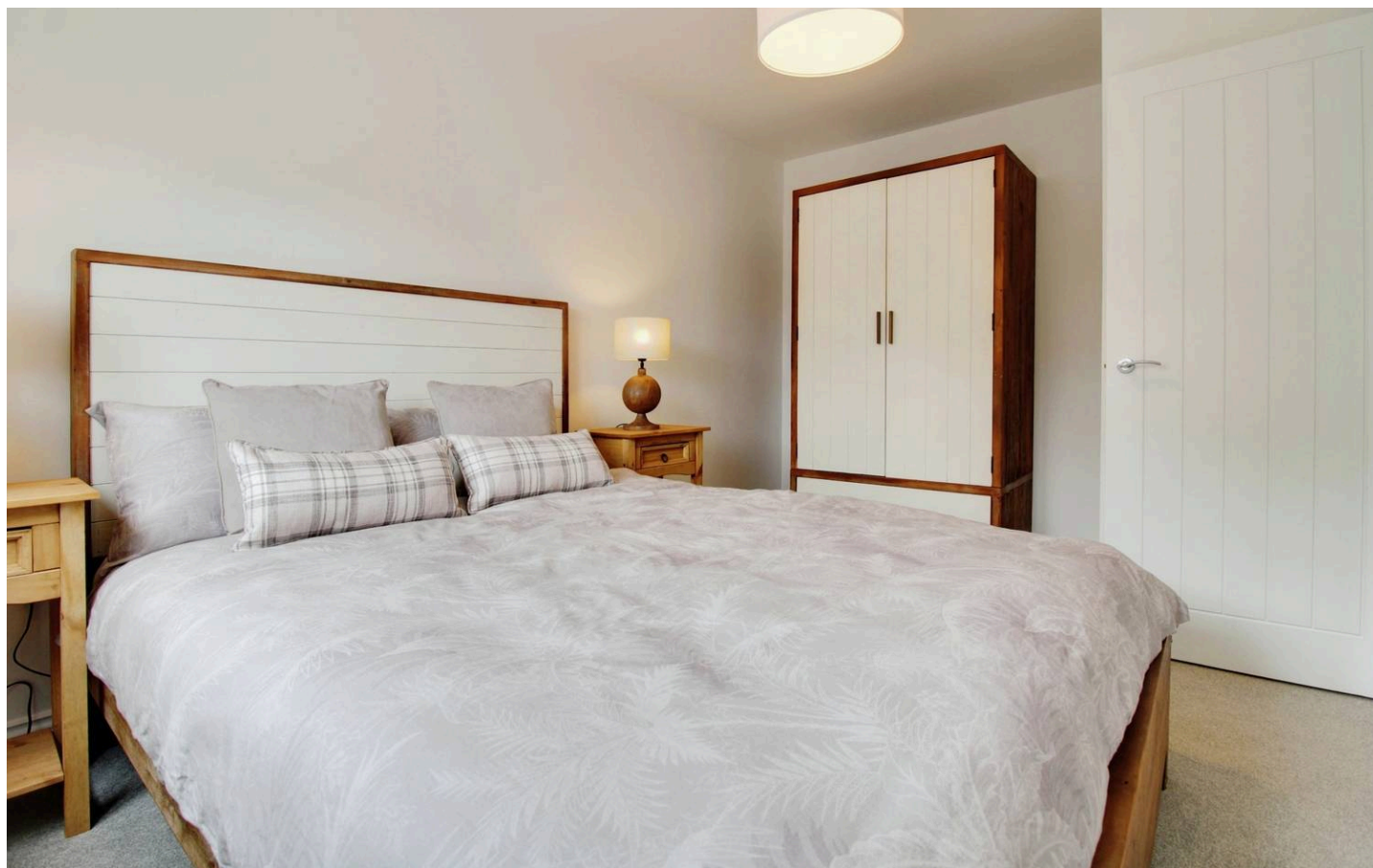
Bedroom 1

15' 3" x 10' 9" (4.66m x 3.28m)

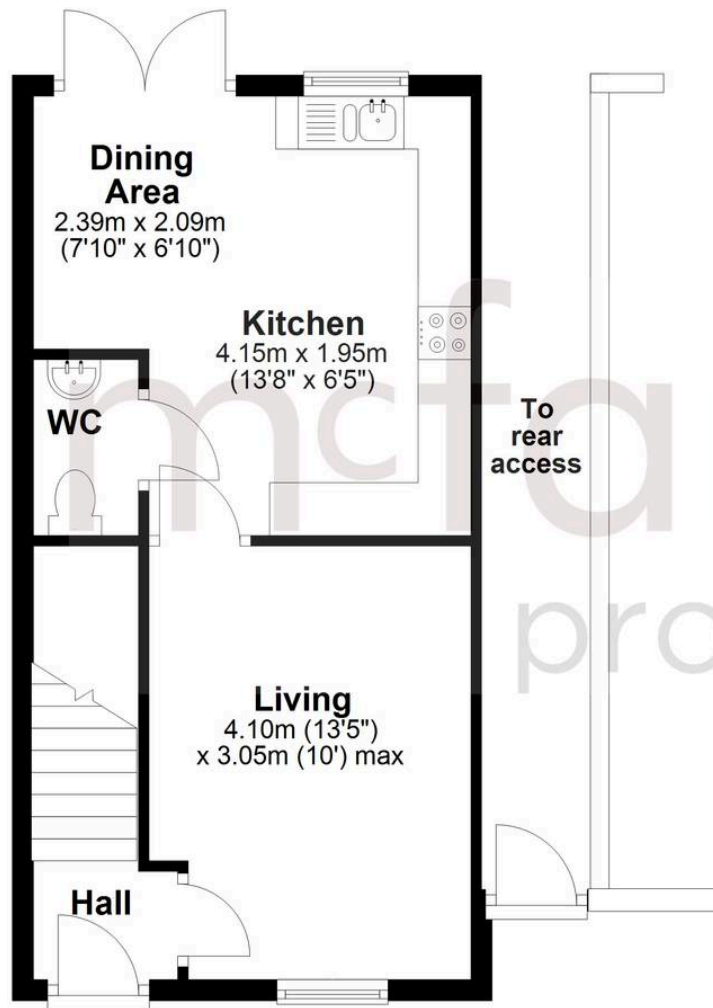
Bedroom 2

17' 7" x 9' 2" (5.36m x 2.80m)

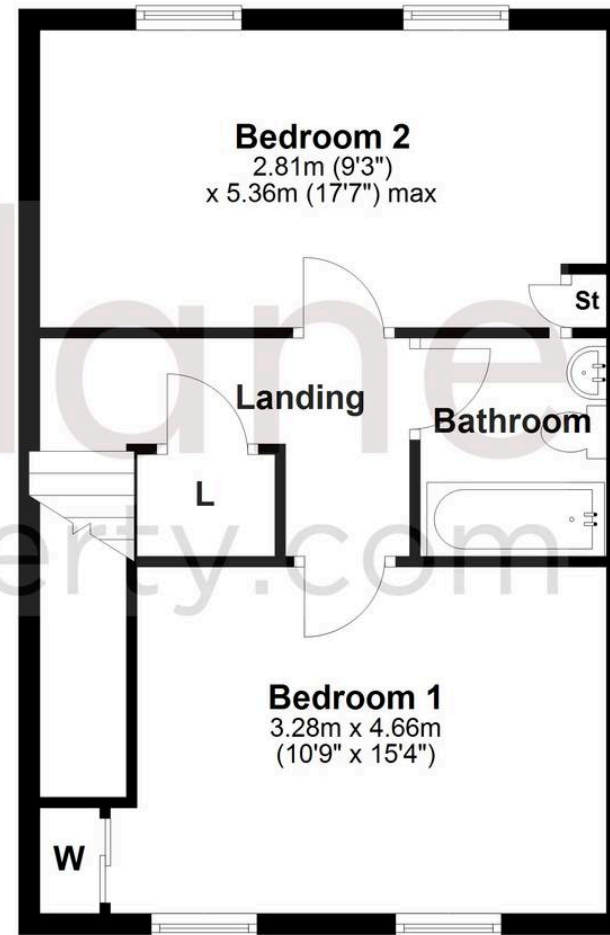
Bathroom



Ground Floor



First Floor



McFarlane Sales & Lettings

Cricklade Sales, 36 High Street, Cricklade - SN6 6AY

01793 751044 • cricklade@mcfarlaneproperty.com • www.mcfarlaneproperty.com/