



4 Brecon Close, Dibden Purlieu  
£335,000

  
ANTHONY JAMES  
PROPERTIES



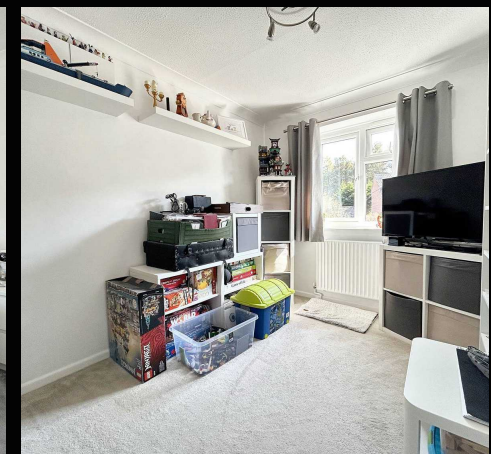
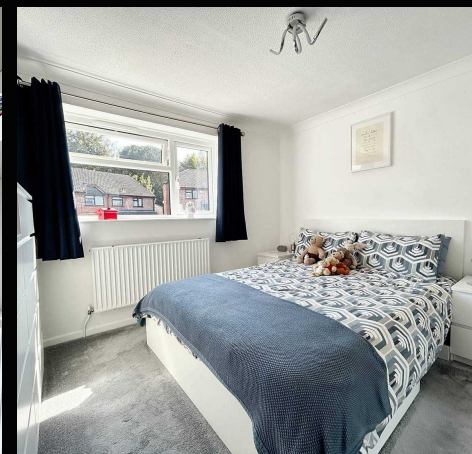
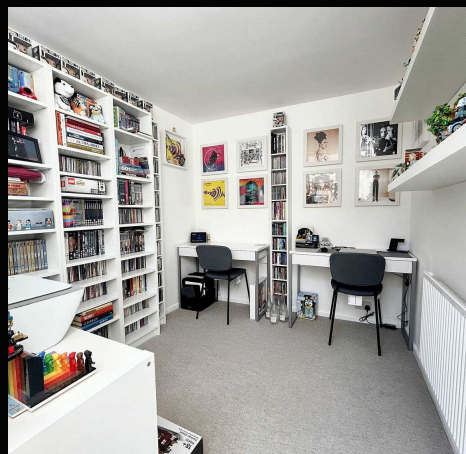
# 4 Brecon Close

Dibden Purlieu, Southampton

An immaculately presented semi detached house, which is situated within a sought after location. Internally there are three bedrooms, a lounge, a study/family room, an open plan kitchen/dining room and a family bathroom. Outside you will find an enclosed and sunny garden to the rear and driveway parking to the front. Further features include UPVC double glazing and gas central heating. An internal viewing is strongly recommended to fully appreciate the accommodation on offer.

Council Tax band: C

Tenure: Freehold

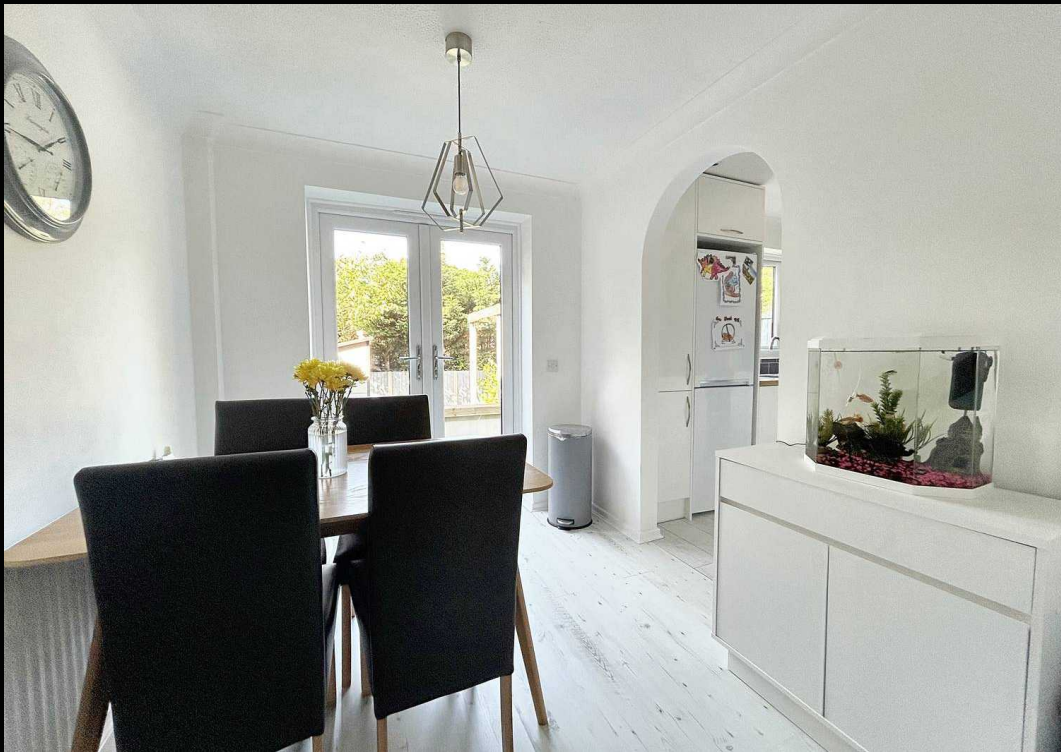


1 Southward House  
Dibden Purlieu SO45 4PT



T: 02380 844405

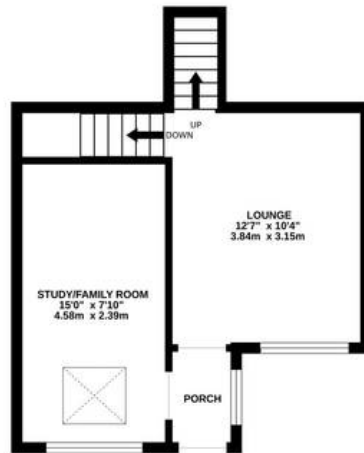
info@anthonyjamesproperties.co.uk



LOWER LEVEL  
168 sq.ft. (15.6 sq.m.) approx.



GROUND FLOOR  
303 sq.ft. (28.2 sq.m.) approx.



1ST FLOOR  
165 sq.ft. (15.3 sq.m.) approx.



2ND FLOOR  
246 sq.ft. (22.9 sq.m.) approx.



TOTAL FLOOR AREA : 882 sq.ft. (82.0 sq.m.) approx.

Whilst every attempt has been made to ensure the accuracy of the floorplan contained here, measurements of doors, windows, rooms and any other items are approximate and no responsibility is taken for any error, omission or mis-statement. This plan is for illustrative purposes only and should be used as such by any prospective purchaser. The services, systems and appliances shown have not been tested and no guarantee as to their operability or efficiency can be given.

Made with Metropix ©2024