

Crucible

Homes



Newman Drive
Sheffield, S9 1LY

£160,000

Overview

Three bedrooms

Semi detached

Fantastic garden

Close to M1 motorway

Meadowhall nearby

Open plan living area



Description

The place to be ... This lovely three bedroom semi detached home has lots to offer inside and out, with a garden that has to be seen to be believed , and sitting on this tree lined street close to Meadowhall and the M1 motorway, it has all you could ask for.

Accommodation in brief comprises: entrance hall, open plan lounge and dining area, kitchen, first floor landing, three bedrooms and bathroom.

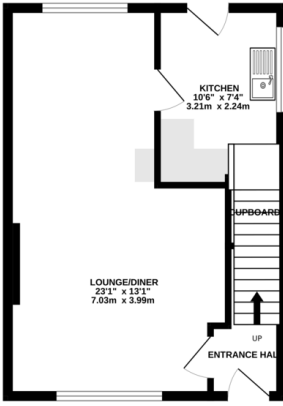
Outside the property has a garden to the front with a driveway providing access to the garage and access to the fantastic rear garden. Set over multiple levels there is a seating area that leads to further lawned garden area's, and a decking area for seating.

The property is ideally located for commuting with the M1 motorway and Meadowhall Transport Interchange just a few minutes drive away. Local schools and amenities are also close by.

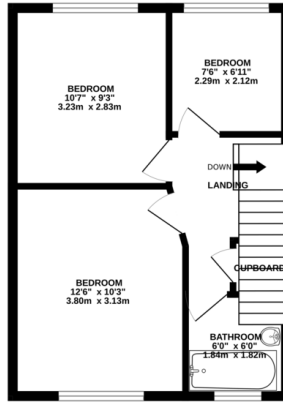


EPC to follow

GROUND FLOOR
372 sq.ft. (34.6 sq.m.) approx.



1ST FLOOR
375 sq.ft. (34.8 sq.m.) approx.



TOTAL FLOOR AREA: 747 sq.ft. (69.4 sq.m.) approx.
Whilst every attempt has been made to ensure the accuracy of the floorplan contained here, measurements of doors, windows, stairs and any other items are approximate and no responsibility is taken for any error, omission or mis-statement. This plan is for illustrative purposes only and should be used as such by any prospective purchaser. The services, systems and appliances shown have not been tested and no guarantee as to their operability or efficiency can be given.
Made with Metropix C3204

PRS
Property Redress Scheme

