



Blenheim Court

Sidcup
DA14 6QQ

Leasehold

Two bedroom ground floor maisonette

Off street parking for 2 cars

Private garden to the side

Chain Free

Easy access to New Eltham station

Convenient for local shops, parks and schools

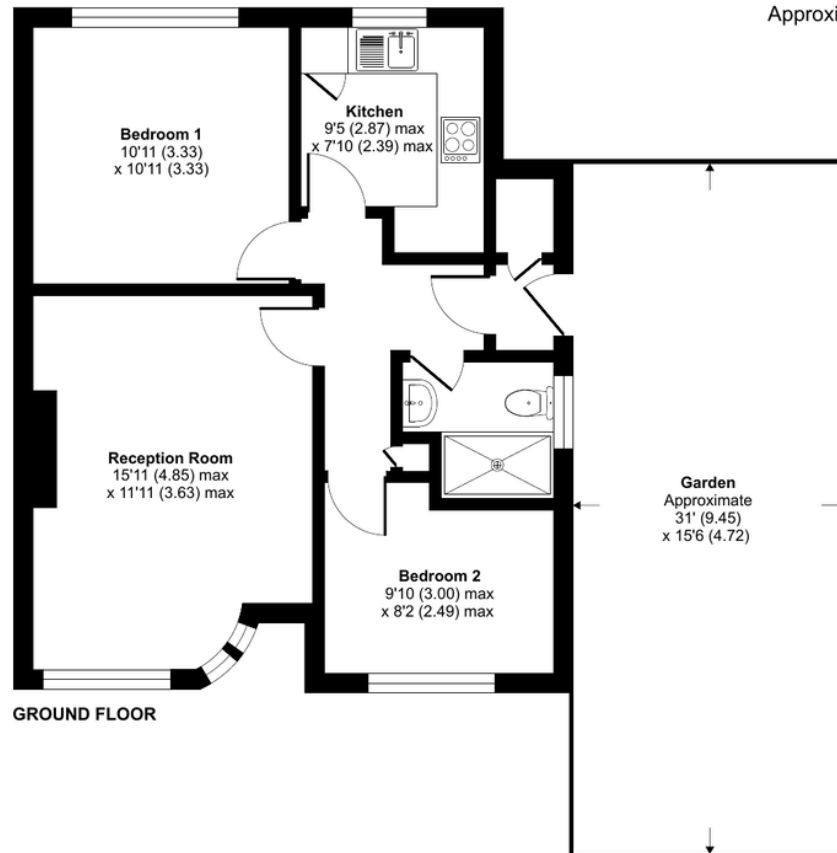
Private front door/entrance hall

Local Authority Bexley London Borough
Council
Council Tax Band C
EPC Rating D

Lease 143 years remaining
Service Charge £300 per annum
Ground Rent £70 per annum

Blenheim Court, Sidcup, DA14

Approximate Area = 585 sq ft / 54.3 sq m
For identification only - Not to scale



Drewery Property Consultants
128 Station Road
Sidcup
Kent
DA15 7AF

Contact
020 8269 6605
info@drewery.co.uk
www.drewery.co.uk

Agents Note: Whilst every care has been taken to prepare these particulars, they are for guidance purposes only. All measurements are approximate and are for general guidance purposes only and whilst every care has been taken to ensure their accuracy, they should not be relied upon and potential buyers/tenants are advised to recheck the measurements.