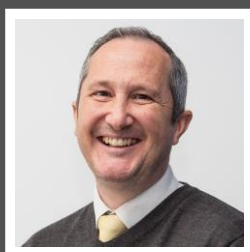


Love Homes



Hinksley Road, Flitwick, Bedfordshire MK45 1HH

This spacious, light-filled home offers double-glazed windows and generous rooms across two floors. The entrance hall leads to a living room with a gas fire and garden access, a separate dining room, and a kitchen with ample storage. Off the kitchen, a rear lobby provides garden access, a cloakroom, utility room, and storage. Upstairs, the large landing leads to three double bedrooms and a family bathroom. While gas heaters provide warmth, there's potential for upgrading to central heating or eco-friendly options. The north-westerly garden features lawn, flower beds, patios, and gated side access.



This property is presented by Duncan Stead - a Love Homes property expert with over 25 years' experience.

Find out more about this property by scanning the QR code.



0.5m



3



2



1

Tenure: Freehold

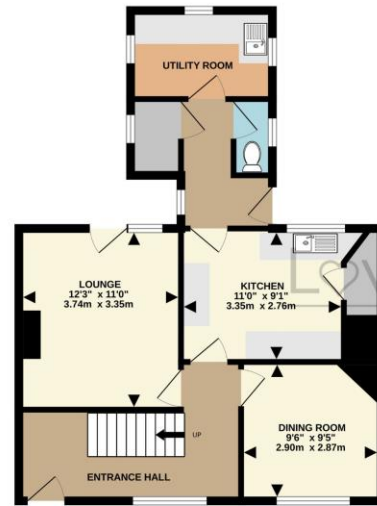
Council Tax: B



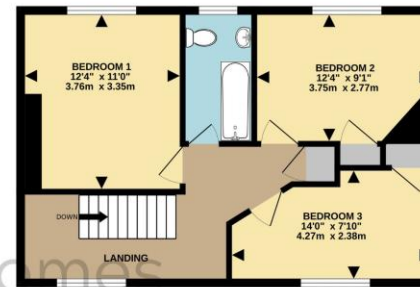
"Our family has cherished this home since 1963, and it holds so many fond memories. My parents absolutely loved living here, and as kids, we found the location ideal - just a few steps from a parade of shops and within walking distance to schools, Flitwick High Street, and the train station. The layout of the house is fantastic, and it always feels bright and welcoming even on the gloomiest days. One of the standout features is the generous size of the bedrooms - each one comfortably fits a double bed which is a rare find these days! We truly hope the new owners will enjoy living here as much as we have".



GROUND FLOOR
567 sq.ft. (52.7 sq.m.) approx.



1ST FLOOR
506 sq.ft. (47.0 sq.m.) approx.



TOTAL FLOOR AREA: 1073 sq.ft. (99.7 sq.m.) approx.
Drawn by Love Homes for illustrative purposes only. Measurements and areas shown are approximate.
Made with Metropix ©2024

Score	Energy rating	Current	Potential
92+	A		
81-91	B		86 B
69-80	C		
55-68	D		
39-54	E	51 E	
21-38	F		
1-20	G		



These particulars are set out as a general outline in accordance with the Property Misdescriptions Act (1991) only for the guidance of intending purchasers or lessees, and do not constitute any part of an offer or contract. Details are given without any responsibility, and any intending purchasers, lessees or third parties should not rely on them as statements or representations of fact but must satisfy themselves by inspection or otherwise as to the correctness of each of them. We have not carried out a structural survey and the services, appliances and specific fittings have not been tested. All photographs, measurements, floor plans and distances referred to are given as a guide only and should not be relied upon for the purchase of carpets or any other fixtures or fittings. Gardens, roof terraces, balconies and communal gardens as well as tenure and lease details cannot have their accuracy guaranteed for intending purchasers. Lease details, service ground rent (where applicable) are given as a guide only and should be checked and confirmed by your solicitor prior to exchange of contracts. No person in the employment of Love Homes has any authority to make any representation or warranty whatever in relation to this property. Purchase prices, rents or other prices quoted are correct at the date of publication and, unless otherwise stated, are exclusive of VAT. We retain the copyright in all advertising material used to market this Property. All information is as advised by the seller and subject to change. Council tax bands can be subject to change by the local council.

5 The Russell Centre, Coniston Road, Flitwick, MK45 1QY
Tel: 01525 713111

Email: flitwick@lovehomes.uk

www.lovehomes.uk



Love Homes