



3 Bishops Rise, Torquay - TQ1 2PJ

Guide Price **499,950**

ABSOLUTE
SALES & LETTINGS





3 Bishops Rise

Torquay

Rare opportunity to acquire a stunning 3-bed detached residence in sought-after location. Spacious and stylish with fitted kitchen, utility room, en suite, garage, sea views and solar panels.

Council Tax band: F

Tenure: Freehold

EPC Energy Efficiency Rating: C

- Spacious three bed detached residence
- Much sought after location
- Fitted kitchen and separate utility room
- Three double bedrooms, principal having an en suite shower room/WC
- Family bathroom/WC and downstairs cloakroom/WC
- Warm air heating and uPVC double glazing
- Owned solar panels generating an income
- Detached double garage with electrically operated door
- Mature front garden, sun terrace and larger than average rear gardens with sea views



3 Bishops Rise

Torquay

The property occupies a much sought after residential position just off of Ilsham Marine Drive and within approximately 1/2 a mile from Wellswood Village with its array of boutique shops and facilities. It is also within close proximity to Ilsham Valley and Meadfoot Beach with Torquay town centre and deep water marina both being within approximately 1.5 miles distance with its further array of shops, amenities and facilities.

Absolute Sales & Lettings

Absolute Sales & Lettings Ltd, 13 Ilsham Road - TQ1 2JG

01803 214214

torquay@movewithabsolute.co.uk

movewithabsolute.co.uk/



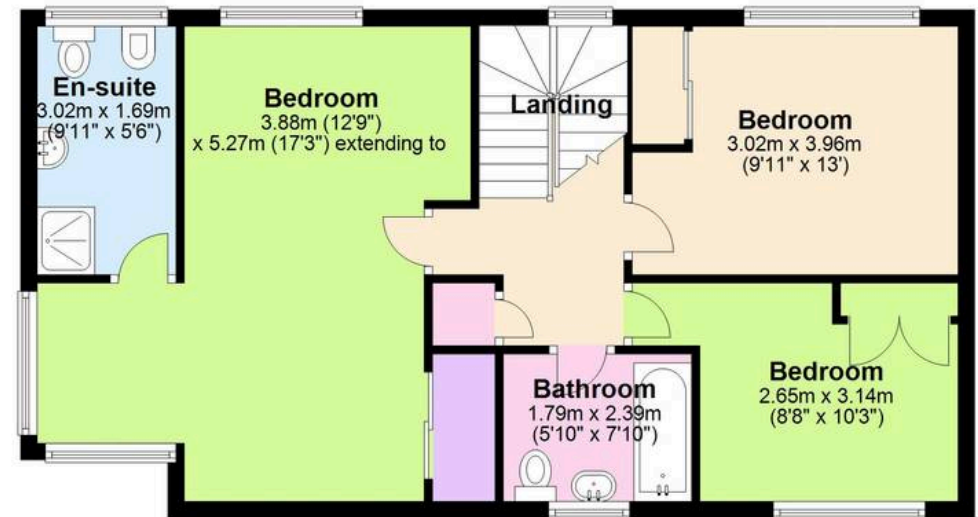
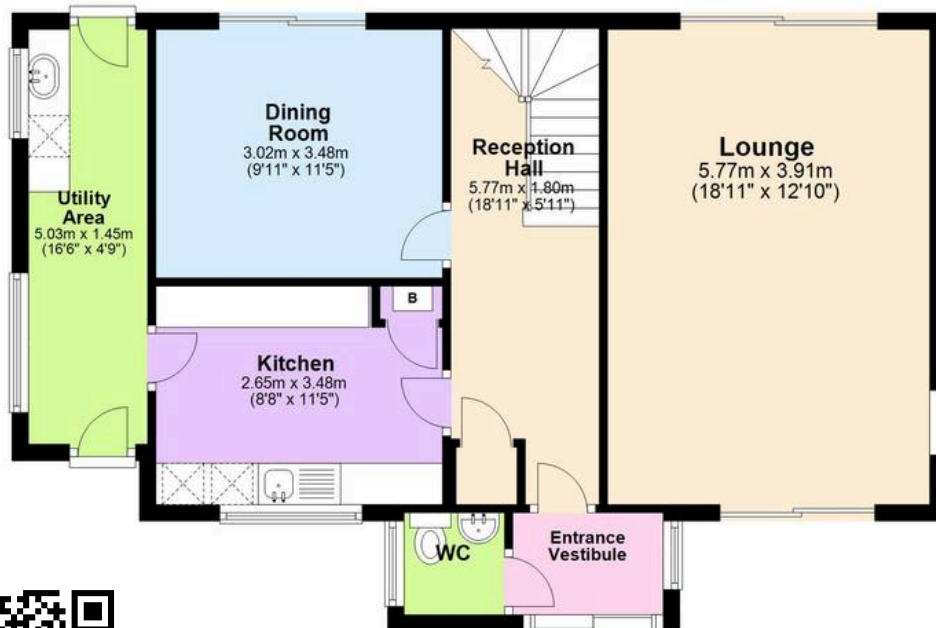
Ground Floor

Approx. 86.9 sq. metres (935.8 sq. feet)



First Floor

Approx. 60.0 sq. metres (646.1 sq. feet)



Total area: approx. 147.0 sq. metres (1582.0 sq. feet)

Approx
Plan produced using PlanUp.

3 Bishops Rise, Torquay

