

17 Brynheulog Street, Ebbw Vale, NP23 6JY

£125,000 Freehold

Mid-Terrace Property • Lounge/Dining Room • Kitchen/Diner • Cloakroom/W.C. • First Floor Bathroom • Two Bedrooms • Rear Garden/Hardstanding



1 Bethcar Street, Ebbw Vale, Gwent, NP23 6HH
Tel: 01495 302301 Email: ebbwvale@bidmeadcook.co.uk
www.bidmeadcook.co.uk

A mid-terrace, bay-fronted property conveniently located for access to Ebbw Vale town centre and local amenities to include a nearby school. The accommodation comprises an entrance porch, hallway, open-plan lounge/dining room, kitchen/diner, cloakroom/W.C., and to the first floor is two bedrooms and a bathroom. The property further benefits from UPVC double glazing, a gas central heating system, enclosed front forecourt and paved garden/off road parking to the rear having double gated access.

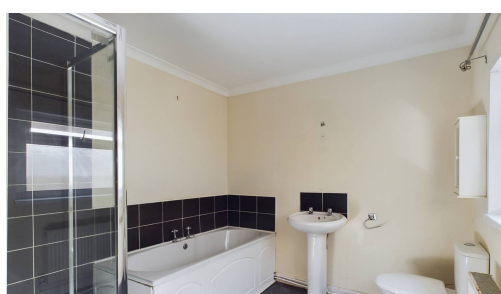


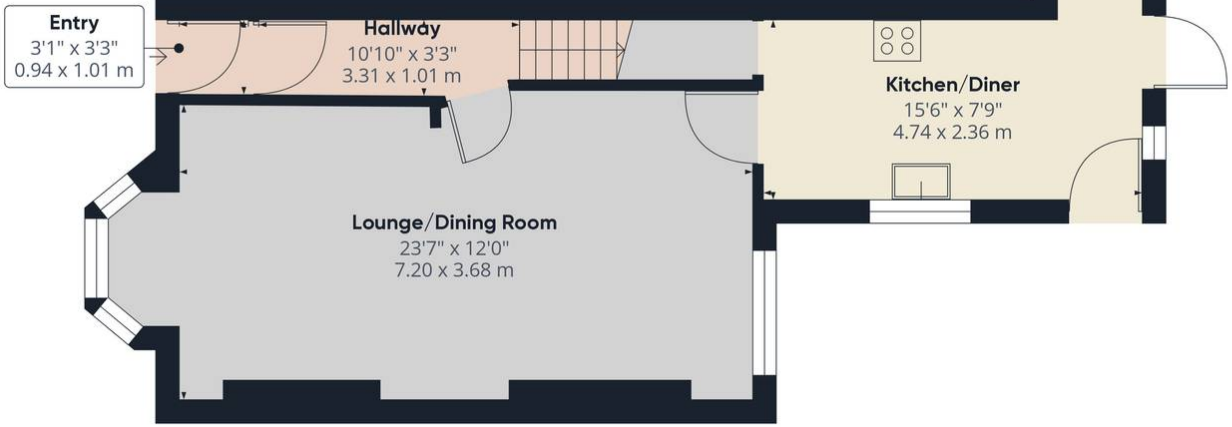
Council Tax band: B

Tenure: Freehold

EPC Energy Efficiency Rating: D

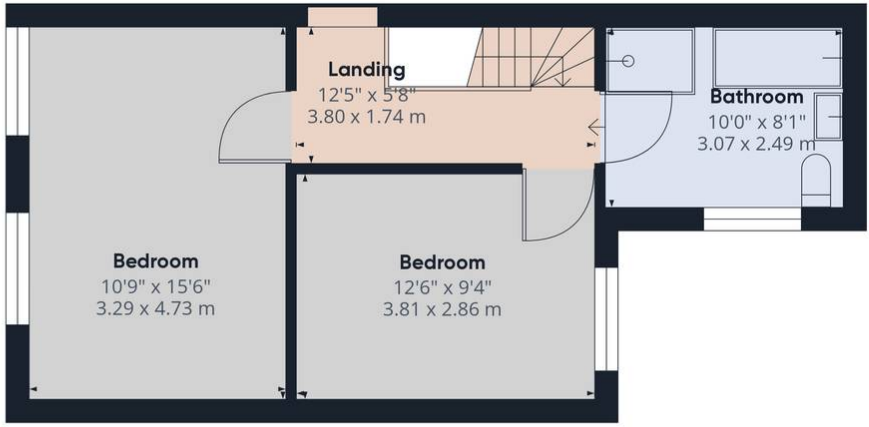
EPC Environmental Impact Rating: E





Ground Floor

Approximate total area⁽¹⁾
931.72 ft²
86.56 m²



Floor 1

(1) Excluding balconies and terraces

While every attempt has been made to ensure accuracy, all measurements are approximate, not to scale. This floor plan is for illustrative purposes only.

Calculations are based on RICS IPMS 3C standard.



No statement in these details is to be relied upon as representation of fact, and purchasers should satisfy themselves by inspection or otherwise as to the accuracy of the statements contain within. These details do not constitute any part of any offer or contract. Bidmead Cook and their employees and agents do not have any authority to give warranty or representation whatsoever in respect of this property. These details and all statements herein are provided without any responsibility on the part of Bidmead Cook or the vendors. Equipment: Bidmead Cook has not tested the equipment or central heating system mentioned in these particulars and the purchaser are advised to satisfy themselves as to the working order and condition. Measurements: Great care is taken when measuring, but measurements should not be relied upon for ordering carpets, equipment etc. The Laws of copyright protect this material. Bidmead Cook is the owner of the copyright. This property sheet forms part of our database and is protected by the database right and copyright laws. No unauthorised copying or distribution without permission.
Bidmead Cook is a trading name of BC Acquisition Ltd.. Registered in England No.14967217