

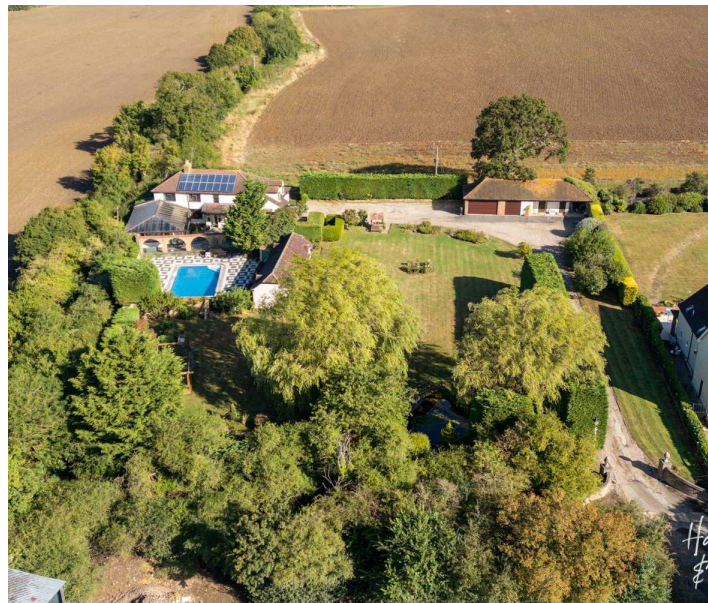
Highfields Kents Lane

North Weald, Epping

Council Tax band: G

Tenure: Freehold

- SPACIOUS FIVE BEDROOM DETACHED FAMILY HOME
- SEPARATE ONE BEDROOM ANNEXE/ POOL HOUSE
- INDOOR & OUTDOOR SWIMMING POOL
- GARAGES & CARPORT
- IN EXCESS OF 4000SQFT
- STUNNING VIEWS ACROSS FARMLAND
- POTENTIAL TO EXTEND(stp)
- CHAIN FREE



Entrance Hall

Lounge

22' 8" x 22' 0" (6.90m x 6.70m)

Family Room/ Morning Room

14' 1" x 22' 1" (4.29m x 6.73m)

Kitchen/ Dining Room

17' 9" x 11' 2" (5.40m x 3.40m)

Dining Area

9' 4" x 13' 11" (2.85m x 4.23m)

Utility

13' 11" x 7' 10" (4.25m x 2.40m)

First Floor

Bedroom

17' 1" x 16' 3" (5.20m x 4.96m)

En-Suite Shower Room

Shower, Wc & Basin

En-Suite Bathroom

Bedroom

17' 11" x 9' 11" (5.46m x 3.03m)

Bedroom

17' 11" x 9' 3" (5.46m x 2.81m)

Bedroom

18' 1" x 10' 11" (5.50m x 3.34m)
Measurements are into recess.

Bedroom

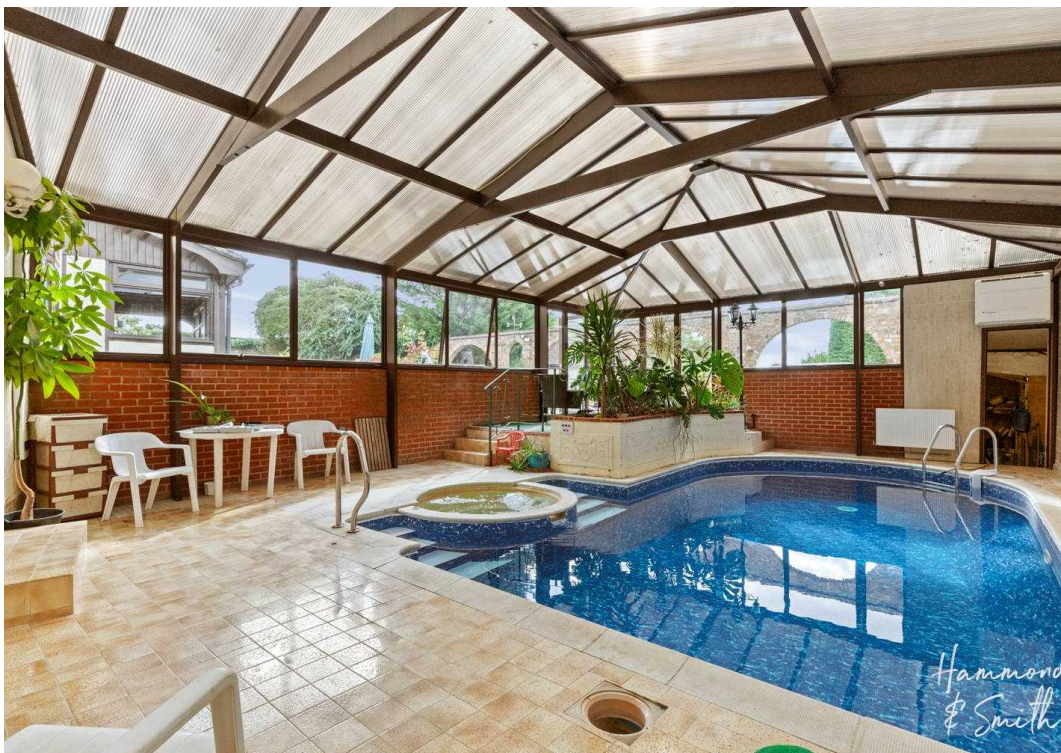
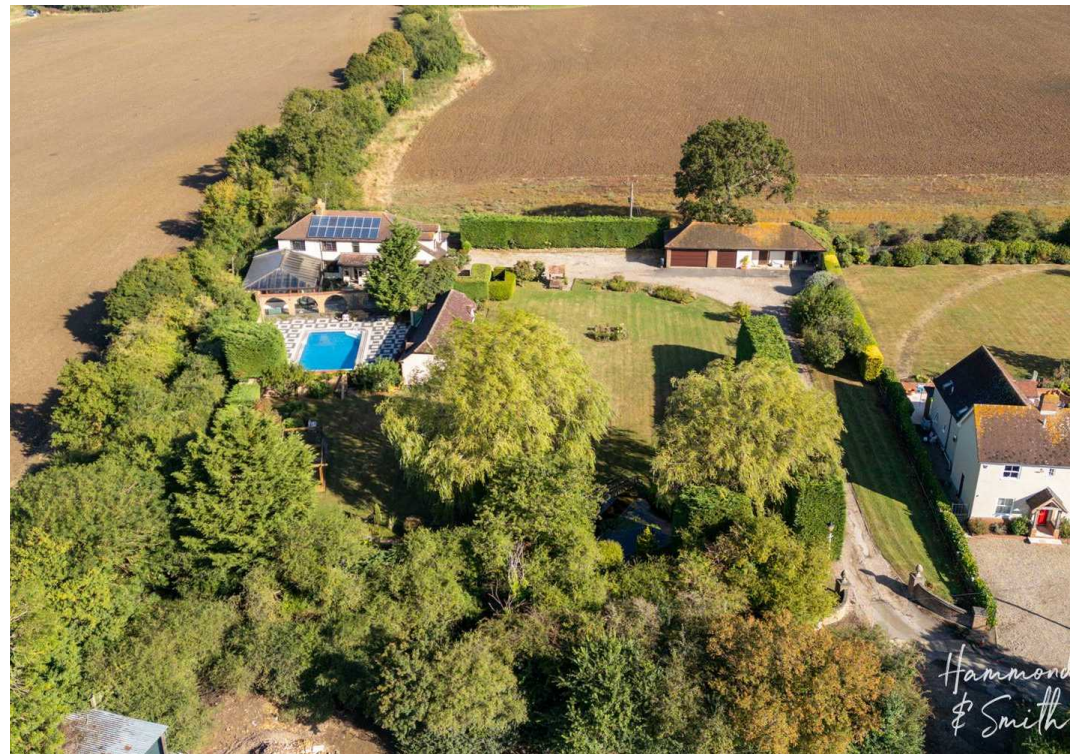
13' 5" x 11' 0" (4.09m x 3.35m)
Measurements are into recess.

Bathroom

Annexe Lounge

12' 0" x 14' 7" (3.65m x 4.44m)

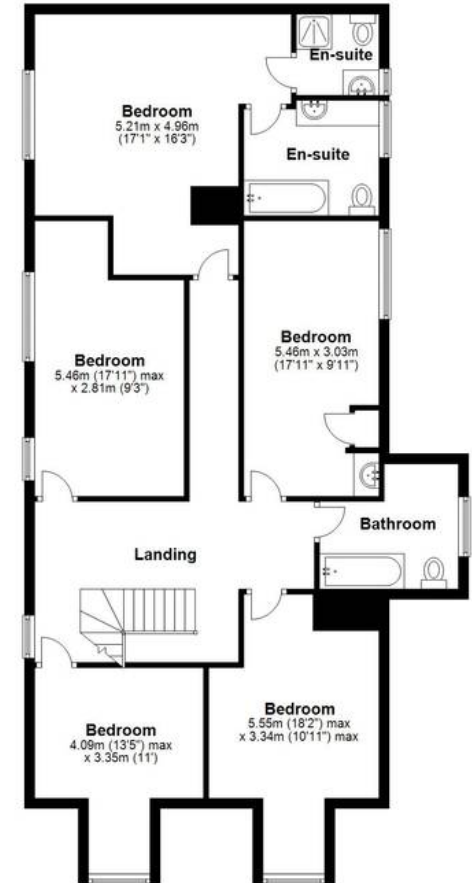




Ground Floor



First Floor



Total area: approx. 387.3 sq. metres (4168.3 sq. feet)

Floorplans are provided for guidance only. They are not to scale & must not form any part of a legal contract or be reproduced. Plan produced using PlanUp.