



25 Great Southsea Street, Southsea
Southsea

Offers in Region of £550,000

 chinneckshaw



25 Great Southsea Street

Southsea, Southsea

This beautifully presented Grade II listed, three-bedroom end of terrace home offers a wonderful opportunity to move in and enjoy its charming features and thoughtful design.

Upon entering from the communal entrance, you are welcomed into the inviting living room, boasting a stunning bay sash window, original floorboards, a cosy wood burner, and tasteful decor. The staircase leads to the first-floor bedrooms and family bathroom.

The principal bedroom, located at the rear, features sash windows overlooking the garden, built-in storage, exposed floorboards, and elegant decor. The family bathroom is a true highlight, offering a walk-in wet room-style shower, a stand-alone bath, a large sash window flooding the space with light, tiled surrounds, and ample storage.

At the front of the landing, two further bedrooms await: one a spacious double with built-in storage and sash windows, and the other a versatile third bedroom, office, or nursery.

The ground floor at the rear provides access to the landscaped garden and includes a utility area with a handy downstairs WC. On the basement level, a beautifully designed kitchen diner offers ample wall and base units, with space for a dishwasher. The kitchen flows seamlessly into a dining area, ideal for entertaining.

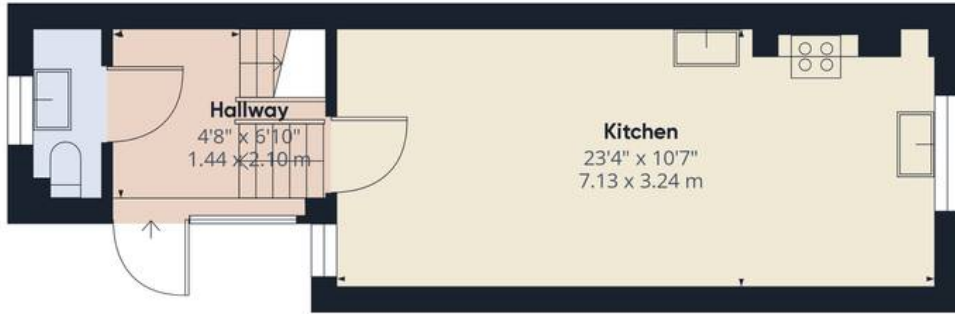
The rear garden is landscaped with stone tiles, a raised decking area, and a garden shed, creating the perfect outdoor retreat.

This delightful property is ready to welcome its new owners and is not to be missed.

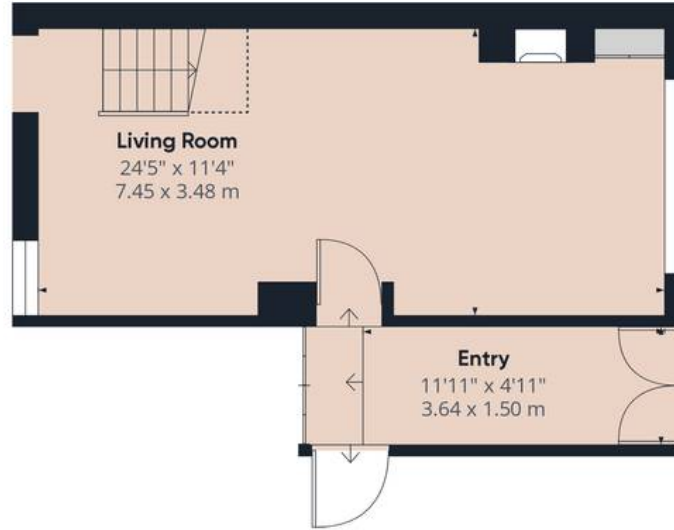
Council Tax band: D

Tenure: Freehold

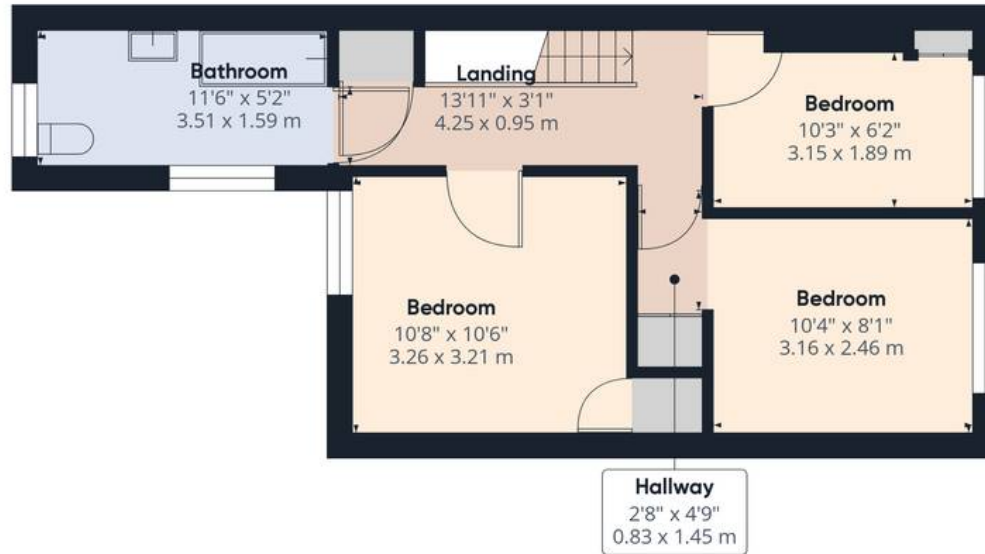




Ground Floor



Floor 1



Floor 2

Approximate total area⁽¹⁾

1057.55 ft²
98.25 m²

Reduced headroom

17.76 ft²
1.65 m²

(1) Excluding balconies and terraces

Reduced headroom

..... Below 5 ft/1.5 m

While every attempt has been made to ensure accuracy, all measurements are approximate, not to scale. This floor plan is for illustrative purposes only.

Calculations are based on RICS IPMS 3C standard.

GIRAFFE360



Chinneck Shaw

Bridge House, Milton Road, Portsmouth – PO3 6AN

023 9282 6731

hello@chinneckshaw.co.uk

www.chinneckshaw.co.uk/

Chinneck Shaw, Bridge House, Milton Road, PO3 6AN Consumer Protection from Unfair Trading Regulations 2008: These details are for guidance only and complete accuracy cannot be guaranteed. If there is any point which is of particular importance, verification should be obtained. The do not constitute a contract or part of a contract. All measurements are approximate. No guarantee can be given with regard to planning permissions or fitness for purpose. No apparatus, equipment, fixture or fitting has been tested. Items shown in the photographs are NOT necessarily included. Interested Parties are advised to check availability and make an appointment to view before travelling to see a property.