



Marsh Crescent, New Romney

New Romney

In Excess of £265,000

7 Marsh Crescent

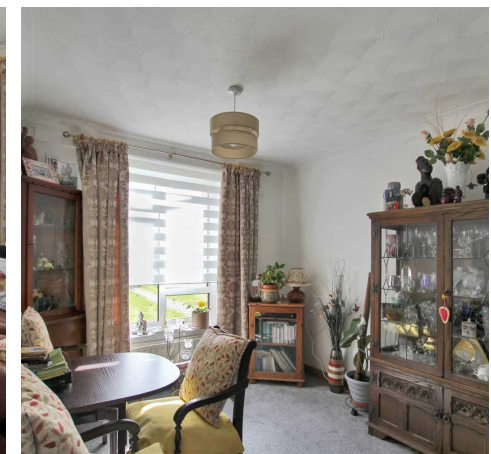
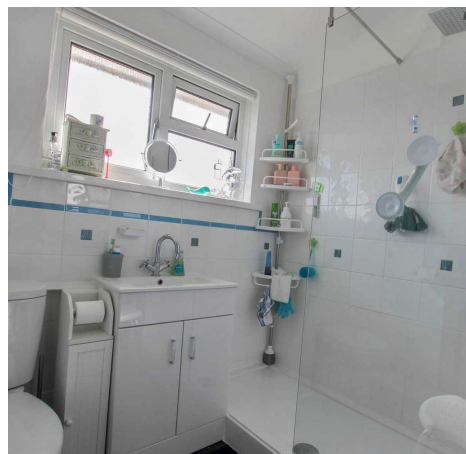
New Romney, New Romney

****Modern 2 Bed End of Terrace Home in New Romney**.** Spacious living room, stylish kitchen, 2 double bedrooms with wardrobes, modern shower room. Large private garden with 2 sheds. Close to town and schools, great for first-time buyers. Book a viewing today!

Council Tax band: B

Tenure: Freehold

- Two Bedroom
- End of Terrace Home
- Spacious Living Room
- Modern Style Kitchen
- Large Garden
- Two Brick Built Sheds
- Town Centre Location





Entrance Porch

Hallway

Lounge/ Diner

20' 0" x 11' 4" (6.10m x 3.45m)

Kitchen

9' 4" x 8' 3" (2.84m x 2.52m)

Landing

Shower Room

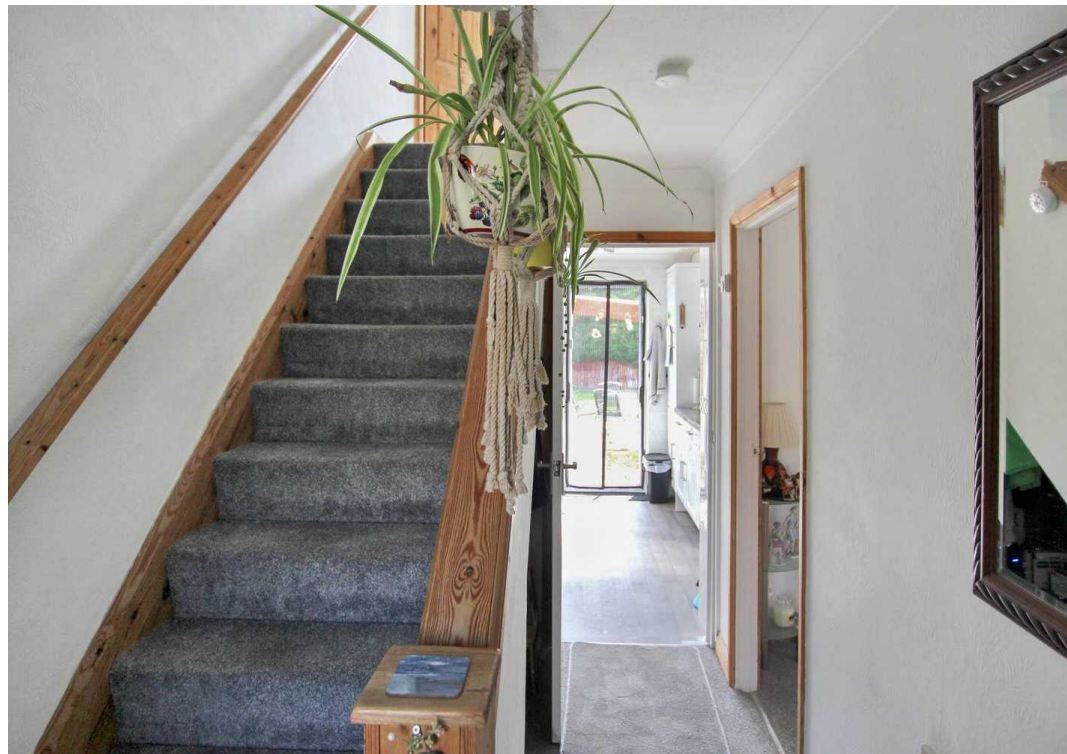
Bedroom

10' 5" x 8' 8" (3.18m x 2.65m)

Bedroom

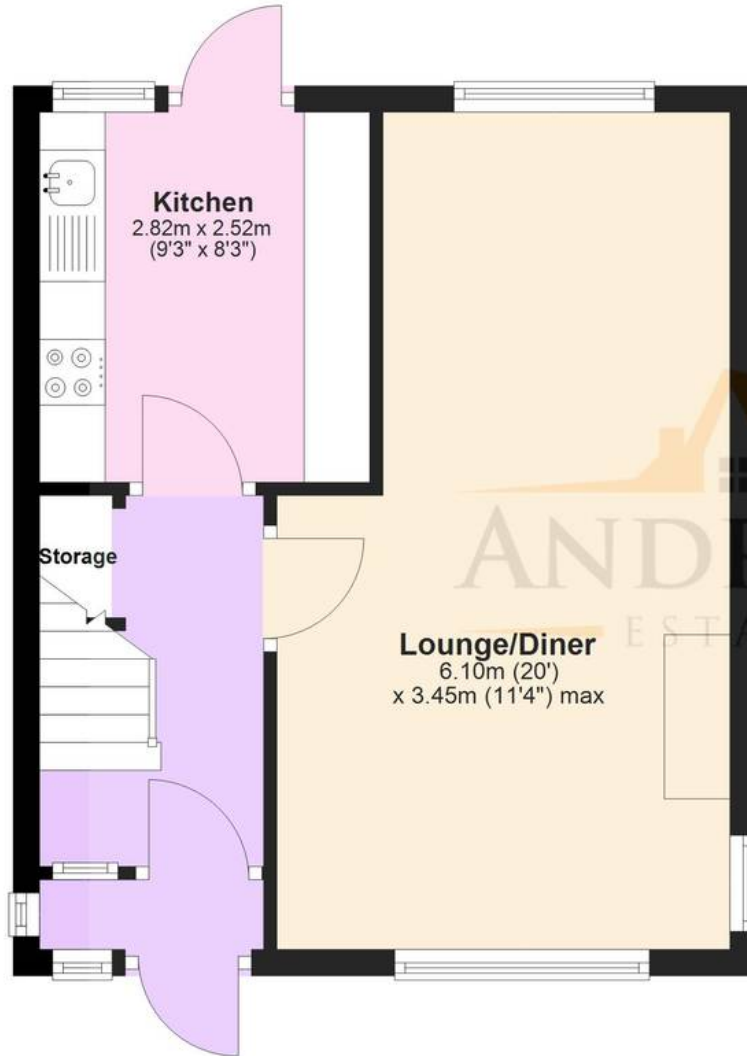
9' 5" x 12' 4" (2.87m x 3.75m)





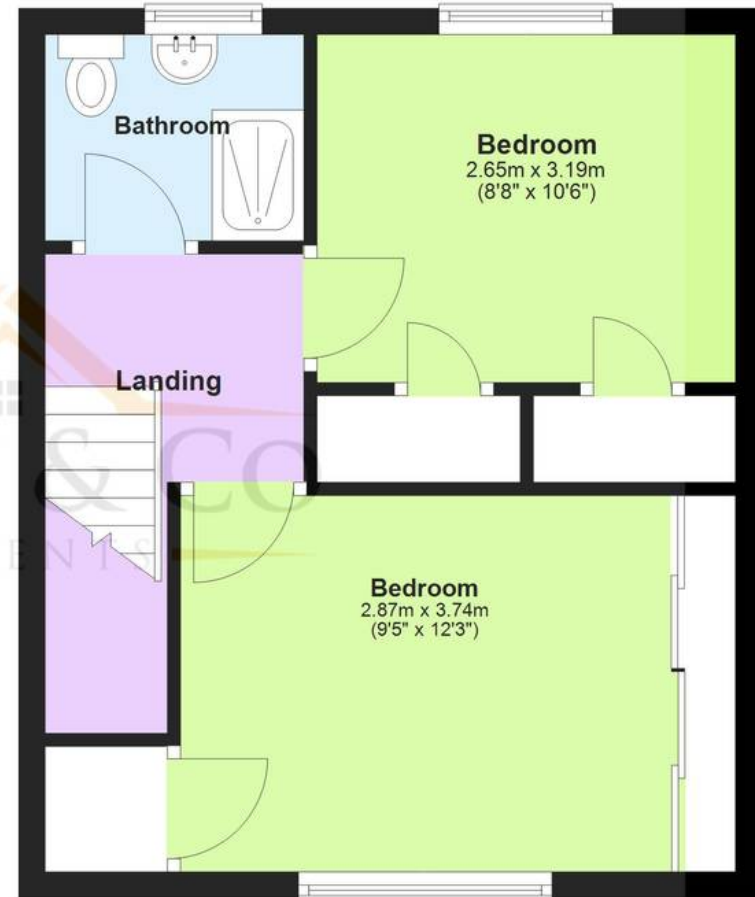
Ground Floor

Approx. 32.8 sq. metres (353.3 sq. feet)



First Floor

Approx. 33.6 sq. metres (361.2 sq. feet)



Total area: approx. 66.4 sq. metres (714.5 sq. feet)

Plans are for layout purposes only and not drawn to scale, with any doors, windows and other internal features merely intended as a guide.

Plan produced using PlanUp.

These particulars are intended to give a fair and reliable description of the property but no responsibility for any inaccuracy or error can be accepted and do not constitute an offer or contract. We have not tested any services or appliances (including central heating if fitted) referred to in these particulars and purchasers are advised to satisfy themselves as to the working order and condition, if a property is unoccupied at any time there may be reconnection charges for any switched off/disconnected or drained services or appliances. All measurements are approximate.



Andrew & Co Estate Agents - New Romney

01797 362898

newromney@andrewandco.co.uk

