



268 Leigh Road, Worsley

£700,000 Freehold

Highly sought-after location • Expansive gardens • Large driveway • Sunroom • Three spacious bedrooms

Timeless elegance & refined living in sought-after Worsley. Restorable period property with potential to extend. 3 spacious bedrooms, grand interiors with ornate details & high ceilings. Expansive gardens, large driveway, garage & sunroom. 0.51 acres of private land. Own a piece of history.

Council Tax band: F

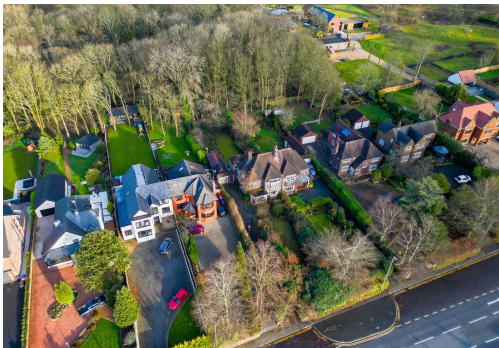
Tenure: Freehold

EPC Energy Efficiency Rating: F

EPC Environmental Impact Rating: F



- › Highly sought-after location
- › Expansive gardens
- › Large driveway
- › Sunroom
- › Three spacious bedrooms

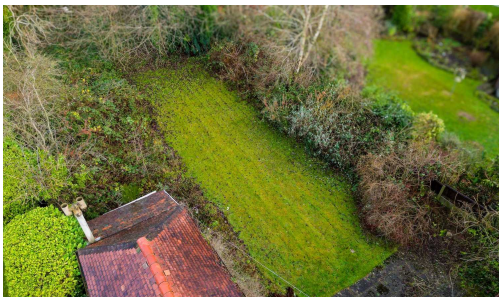


Council Tax band: F

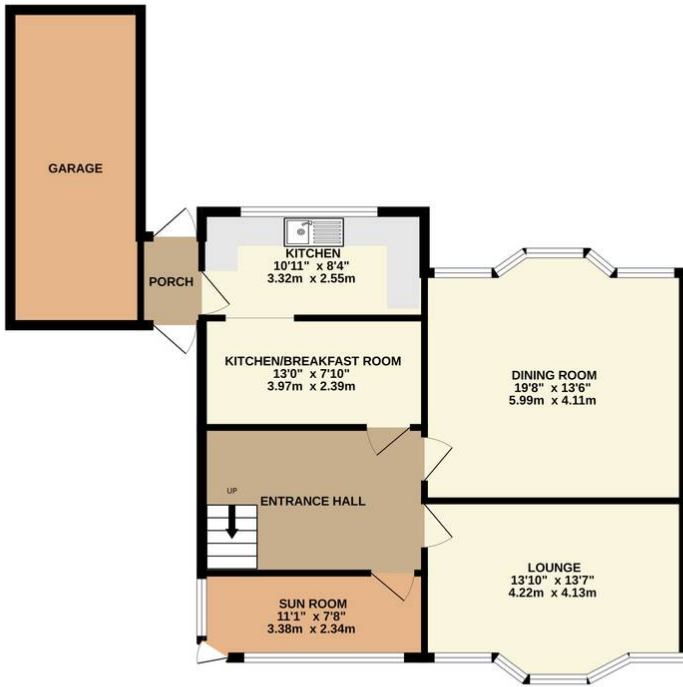
Tenure: Freehold

EPC Energy Efficiency Rating: F

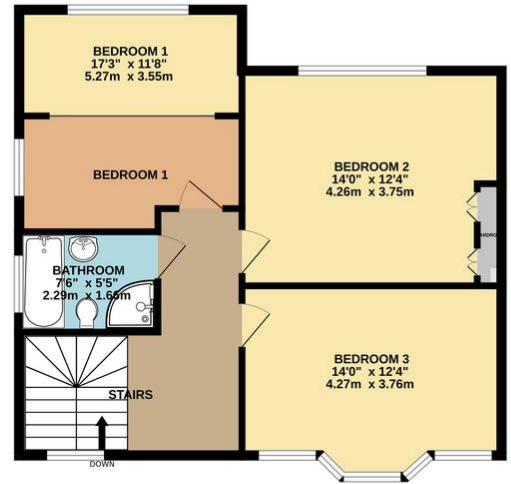
EPC Environmental Impact Rating: F



GROUND FLOOR
833 sq.ft. (77.4 sq.m.) approx.



1ST FLOOR
671 sq.ft. (62.4 sq.m.) approx.



TOTAL FLOOR AREA : 1504 sq.ft. (139.7 sq.m.) approx.

Whilst every attempt has been made to ensure the accuracy of the floorplan contained here, measurements of doors, windows, rooms and any other items are approximate and no responsibility is taken for any error, omission or mis-statement. This plan is for illustrative purposes only and should be used as such by any prospective purchaser. The services, systems and appliances shown have not been tested and no guarantee as to their operability or efficiency can be given.
Made with Metropix ©2023

You can include any text here. The text can be modified upon generating your brochure.