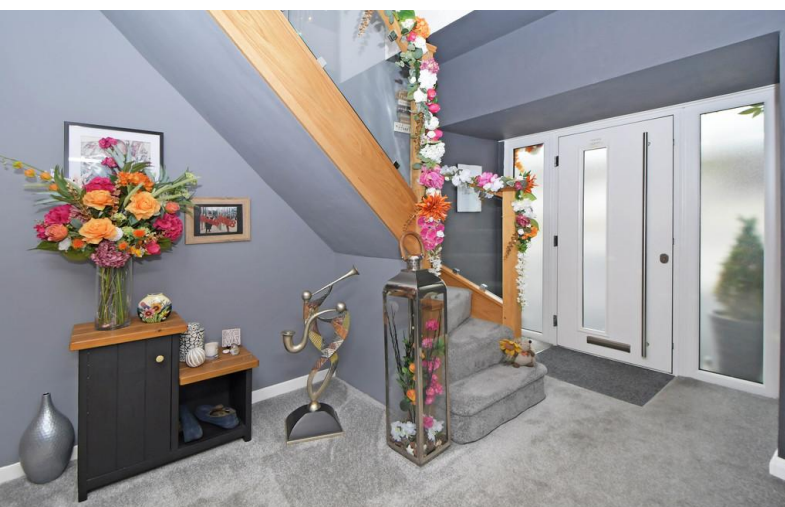


**FOR SALE**



**Oaklands Avenue, Newcastle**

**4 Bedrooms, 2 Bathroom, Detached Dormer Bungalow**

**£595,000**



## Oaklands Avenue, Newcastle

4 Bedrooms, 2 Bathroom

**£595,000**

- Modern open-plan kitchen
- Four double bedrooms
- Stunning landscaped garden
- BBQ area and hot tub
- Detached self-contained annexe



**OVERVIEW** Welcome to this magnificent detached property that's up for sale and it's simply perfect for families! Immaculately presented and completely redesigned in a modern and stylish way, it's a credit to the current owners. This home boasts four bedrooms and two bathrooms, and it's nestled amidst lush green spaces.

The heart of the home is the open-plan kitchen, which comes with modern appliances and plenty of natural light. It also includes a dining space, perfect for family dinners or entertaining guests.

The property offers four bedrooms, all of which are doubles. The master bedroom is particularly spacious and comes with an ensuite for your convenience. Bedroom 1 features built-in wardrobes, offering ample storage space. Bedroom 2 is a delight with French doors, adding a touch of elegance.

The bathrooms are a dream. Bathroom 1 features a free-standing bath and a modern & stylish dressing area, offering a touch of luxury.

Stepping outside, the stunning landscaped garden will take your breath away. It's not just a garden, but an oasis of tranquillity with a BBQ area and a hot tub - perfect for unwinding after a long day.

A standout feature of this property is the detached self-contained annexe, offering a multitude of uses, whether you need an office space, a gym, or guest accommodation. Plus, there's ample driveway parking available.

This property is a gem, waiting to be discovered. Don't miss out on the chance to make it your family home. Make your move today!



**ENTRANCE HALL** 26' 3" x 8' 9" (8.01m x 2.68m)  
Entered via a composite front door, stairs leading to first floor with timber and glass balustrade, UPVC French doors leading onto a decked seating area, wood effect laminate flooring, radiator.

**LOUNGE/DINER/KITCHEN** 40' 1" x 11' 8" (12.22m x 3.58m) A stunning, modern and contemporary open plan lounge, dining room and kitchen. The lounge area has double glazed windows to both the front and side elevations, two radiators and wood effect laminate flooring through to the dining area which has a further double glazed window to the side elevation, The stylish kitchen is fitted with contrast wall and base units with complementary worksurface over, integrated appliances for a sleek and minimalist design and range cooker, to the rear there is a glass atrium with bi fold doors opening onto the rear garden, ceramic tiled flooring, vertical radiators.

**BEDROOM** 12' 9" x 11' 4" (3.91m x 3.47m) Having fitted wardrobes, double glazed window to the front



elevation, wood flooring, radiator.

**BATHROOM/DRESSING AREA** 11' 10" x 11' 0" (3.61m x 3.37m) A luxurious family bathroom fitted with a modern white suite which comprises; low level WC, hand wash basin set in vanity units, walk in shower, and free standing bath, ceramic tiled floor, double glazed windows to the rear elevation,

**BEDROOM** 13' 3" x 8' 7" (4.05m x 2.64m) UPVC French doors opening onto the rear garden, wood effect laminate flooring, vertical radiators.

**UTILITY ROOM** 8' 5" x 3' 6" (2.58m x 1.07m) Having space and plumbing for washing machine and tumble dryer.

**FIRST FLOOR LANDING** 10' 1" x 8' 10" (3.08m x 2.70m) Vaulted ceiling with double glazed windows to the front and rear elevations, radiator.

**MASTER BEDROOM** 21' 6" x 17' 3" (6.56m x 5.27m)



An extremely spacious master bedroom having dual aspect windows to the front and rear elevations, radiator.

EN-SUITE 7' 4" x 7' 0" (2.26m x 2.15m) Modern and contemporary white suite comprising; low level WC, hand wash basin set in vanity unit and free standing bath, double glazed window to the rear elevation, wood effect laminate flooring, vertical radiator.

BEDROOM 17' 3" x 11' 11" (5.27m x 3.64m) Double glazed window to the rear elevation, radiator.

EXTERNAL FRONT The front of the property offers a tarmac driveway which provides ample off road parking for several vehicles, a roller shutter garage door opens into a useful workshop area which is perfect for securely storing motorbikes and gardening equipment.

REAR GARDEN Quite simply stunning!! Professionally landscaped with several seating areas, raised decked area, hot tun and BBQ area and lawned gardens with pathway leading down to the fully self contained annexe.

ANNEXE A fully self contained two bedroom annexe which the current owners use as a very successful Air B&B but which is perfect as a 'granny annexe', or guest accommodation. Styled to the same high specification as the main house there is a modern kitchen with open plan lounge, modern and contemporary bathroom and two bedrooms.



%epcGraph\_c\_1\_210%





All measurements are approximate and for display purposes only.

**Martin & Co Newcastle under Lyme**  
 12 Albion Street • Stoke-On-Trent • ST1 1QH  
 T: 01782 453 001 • E: newcastleunderlyme@martinco.com

**01782 453 001**  
<http://www.martinco.com>



**Accuracy:** References to the Tenure of a Property are based on information supplied by the Seller. The Agent has not had sight of the title documents. A Buyer is advised to obtain verification from their Solicitor. Items shown in photographs including but not limited to carpets, fixtures and fittings are not included unless specifically mentioned within the sales particulars. They may however be available by separate negotiation. Buyers must check the availability of any property and make an appointment to view before embarking on any journey to see a property. No person in the employment of the agent has any authority to make any representation about the property, and accordingly any information given is entirely without responsibility on the part of the agents, sellers(s) or lessors(s). Any property particulars are not an offer or contract, nor for part of one. **Sonic / laser Tape:** Measurements taken using a sonic / laser tape measure may be subject to a small margin of error. **All Measurements:** All Measurements are Approximate. **Services Not tested:** The Agent has not tested any apparatus, equipment, fixtures and fittings or services and so cannot verify that they are in working order or fit for the purpose. A Buyer is advised to obtain verification from their Solicitor or Surveyor.