

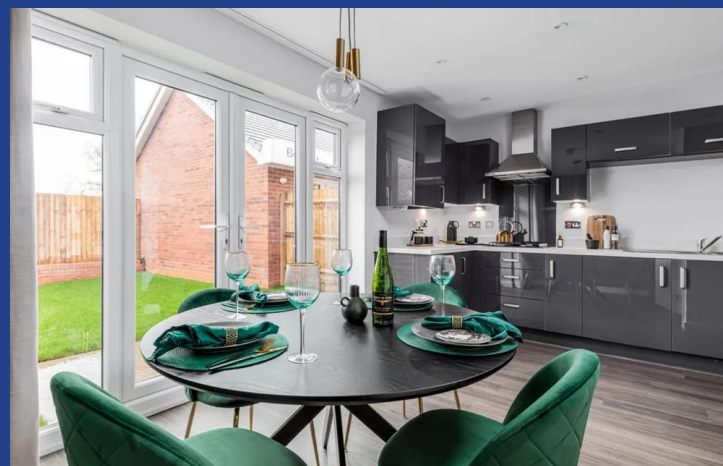
St. John Avenue,
Radyr, Cardiff, CF15 8GS



Estate Agents and
Chartered Surveyors

Asking Price Of

£319,995



Semi- Detached Property



Property Description

**** NEW HOME ** SEMI-DETACHED PROPERTY ** THREE BEDROOMS** SOUGHT AFTER AREA OF RADYR **** A newly Built ' Shaldon' style semi-detached home. The property briefly comprises of entrance hallway, living room, cloakroom and kitchen/dining room. To the first floor; principal bedroom with en-suite, a second double bedroom, a third bedroom and family bathroom. Rear garden. EPC Rating: TBC

Tenure Freehold

Council Tax Band TBC

Floor Area Approx 817 sq ft

Viewing Arrangements
Strictly by appointment

LOCATION

The property is situated in the sought after Radyr area of Cardiff which is well served by amenities. These include a parade of shops, golf and tennis clubs, doctors and dentists surgeries, optician, restaurant, two good primary schools and a comprehensive school. There is also a train station and regular bus service to and from the city centre

ENTRANCE

Entered via a composite door. Hallway with doors to cloakroom and living room. Stairs to first floor.

LIVING ROOM

17' 4" x 12' 2" (5.307m x 3.712m)
A good sized, family living room. Radiator. uPVC double glazed window to front. Door leading to kitchen diner.

KITCHEN/DINING AREA

14' 11" x 9' 2" (4.55m x 2.80m)
Appointed along three sides, a modern kitchen with eye and low level cupboards beneath quality worktops. Stainless steel one and a half bowl sink with chrome mixer tap. Integrated oven and hob with extractor hood. Ample space for dining room table. French doors leading into rear garden.

CLOAKROOM

0' 0" x 0' 0" x 0m)
White suite, low level WC, wash hand basin with chrome mixer tap, heated towel rail, obscured glass window to front.

FIRST FLOOR

BEDROOM ONE

12' 2" x 8' 2" (3.714m x 2.5m)
uPVC double glazed window to front, principal bedroom. Radiator. Door to en-suite.

EN-SUITE

White suite; low level WC, wash hand basin with chrome mixer tap, shower cubicle with chrome shower. Obscured glass window to side.

BEDROOM TWO

10' 1" x 8' 2" (3.09m x 2.5m)
Window overlooking the rear garden; a second double bedroom. Radiator.

BEDROOM THREE

8' 7" x 6' 4" (2.63m x 1.94m)
A third bedroom. Radiator. Window to front.

FAMILY BATHROOM

0' 0" x 0' 0"
Modern white suite; low level WC, wash hand basin, bath with chrome mixer tap and shower. Extractor fan, heated towel rail. Tiled splashbacks. Obscured glass window to rear.

OUTSIDE

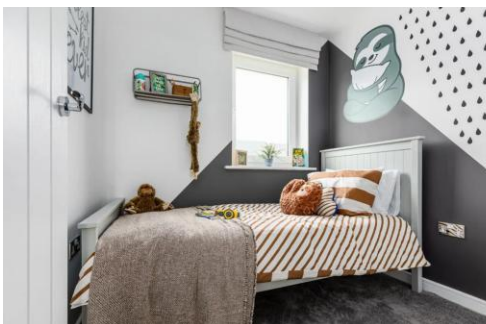
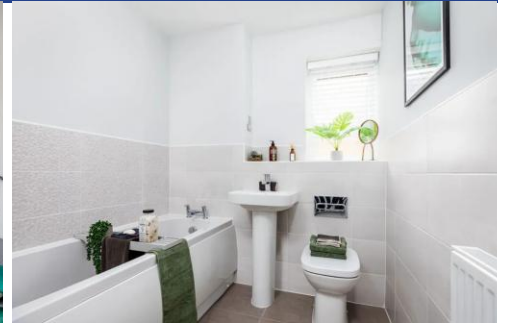
REAR GARDEN

Garden with gate for side access.

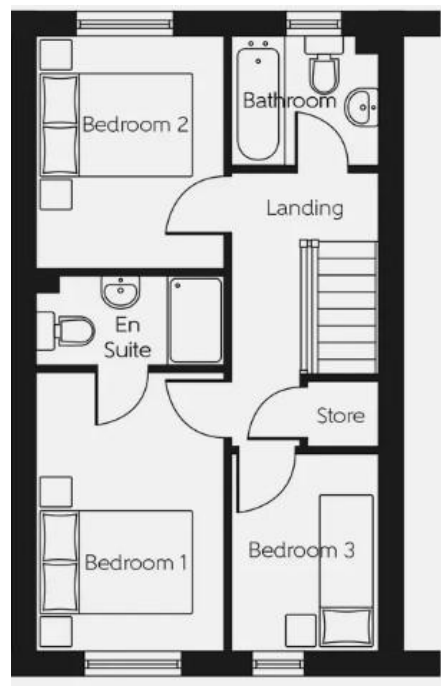
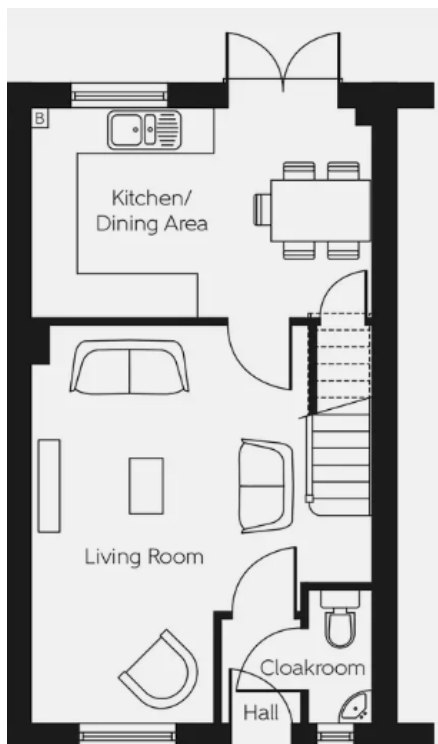
ADDITIONAL INFORMATION

Photographs are for illustration purposes only.

St. John Avenue,
Radyr, Cardiff, CF15 8GS



St. John Avenue,
Radyr, Cardiff, CF15 8GS



EPC TO FOLLOW

Radyr 029 2084 2124

Radyr, 6 Station Road, Radyr, Cardiff, South
Glamorgan, CF15 8AA



mgy.co.uk

Important Notice: These particulars are prepared for guidance only and do not form whole or any part of any offer or contract. Whilst the particulars are given in good faith, they are not to be relied upon as being a statement or representation of fact. They are made without responsibility on the part of MGY Ltd or Vendor/lessor and the prospective purchaser/lessee should satisfy themselves by inspection or otherwise as to their accuracy. Neither MGY Ltd nor anyone in their employ, or the vendor/lessor, imply, make or give any representation/warranty whatsoever in relation to this property.