



Toprow, Wreningham - NR16 1AR

**STARKINGS
& WATSON**

HYBRID ESTATE AGENTS



Toprow

Wreningham, Norwich

NO CHAIN. This BESPOKE 2019 BUILT detached bungalow enjoys a HIGH SPECIFICATION FINISH, whilst being situated in a PRIVATE and QUIET SETTING backing onto FIELDS. With AIR SOURCE HEATING and UNDER FLOOR HEATING throughout, the property extends to OVER 1560 Sq. ft (stms). The HALL ENTRANCE includes storage and a W.C. Over 26' of LIVING SPACE sits in the middle of the bungalow, including a SITTING AREA with WOOD BURNER, dining room with BI-FOLDING DOORS to rear, and the KITCHEN including a CENTRAL ISLAND. WOOD EFFECT TILED FLOORING runs through the LIVING SPACE, with DUAL ASPECT windows ensuring a LIGHT and BRIGHT FEEL. A useful UTILITY ROOM and integral GARAGE leads off, with a HALLWAY including a 7' BUILT-IN CUPBOARD, THREE DOUBLE BEDROOMS, en suite and family bathroom. To the outside, the GARDENS include a raised LAWNED GARDEN, patio seating and covered DECKED SEATING AREA.

Council Tax band: E

Tenure: Freehold

EPC Energy Efficiency Rating: B



- 2019 Build Bespoke Bungalow
- Open Plan Kitchen/Sitting/Dining Room
- Wood Burner & Bi-Folding Doors
- Short Drive to Amenities & Transport Links
- Luxury En Suite & Bathroom
- Three Double Bedrooms
- Air Source Under Floor Heating
- Integral Garage & Private Gardens
-

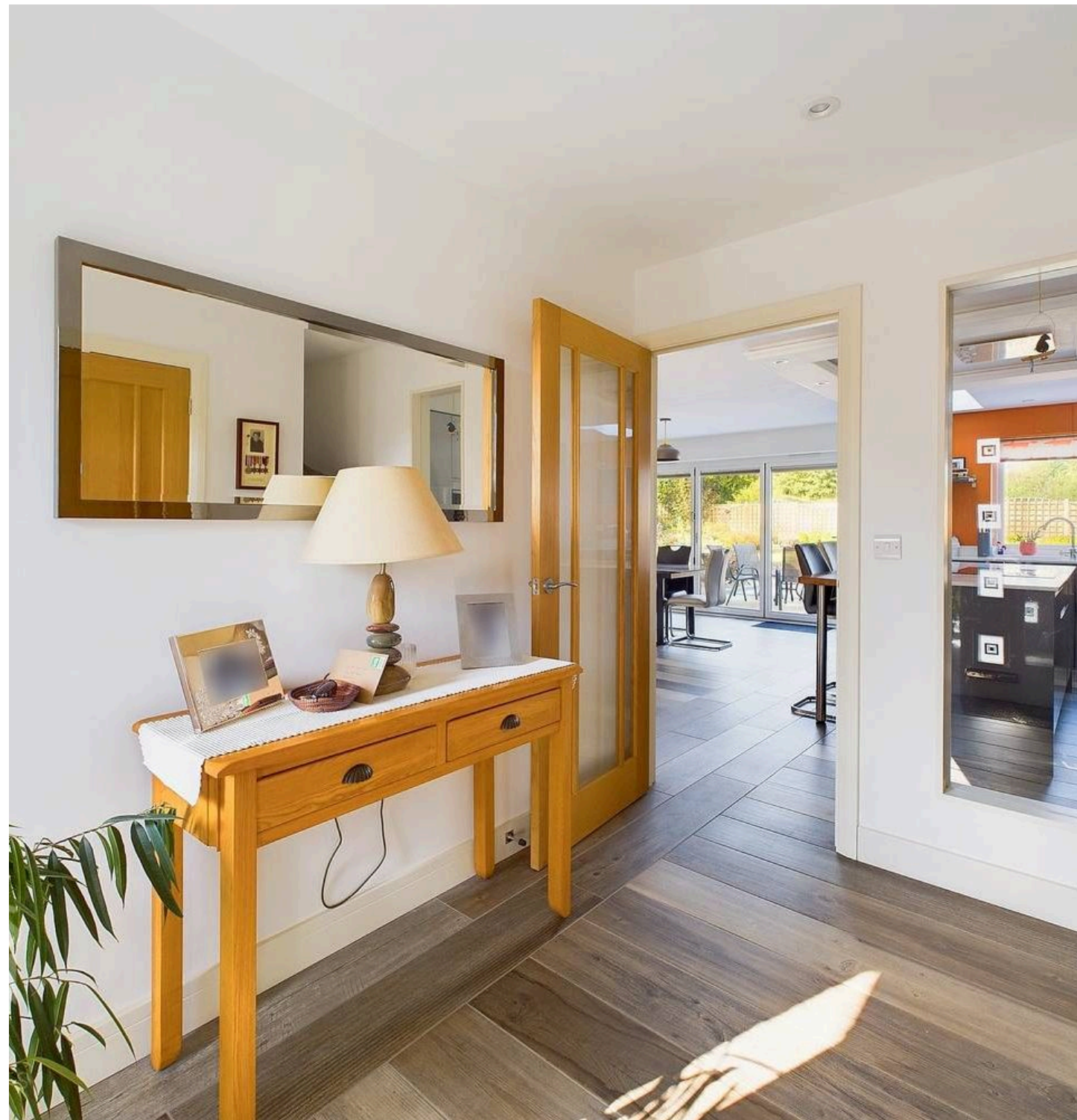
Set in the beautiful county of Norfolk, Wreningham is a small semi-rural village situated approximately 3 miles from Wymondham and 9 miles from Norwich. Wymondham provides an excellent range of amenities including schools, two supermarkets, leisure centre, train station, restaurants and many other facilities.

SETTING THE SCENE

Tucked away at the top of this private cul-de-sac setting with a shingle driveway to front, this exclusive modern detached bungalow enjoys an attractive facade of brick and cladding. A brick weave entrance leads to the adjoining and integral garage, with steps and ramp leading to the main entrance door and porch way.

THE GRAND TOUR

Stepping inside you are immediately greeted by the hall entrance with attractive tiled flooring underfoot in a wood effect style complete with underfloor heating. This large meet and greet space includes built-in storage and a useful WC with a modern white two piece suite including storage under the sink and striking splash-backs in a wood effect style. The main living space can be found beyond the hall creating an open plan sitting, dining and kitchen space with a striking decor and the continuation of the tiled wood effect flooring and underfloor heating.





Meadow Rise Toprow

Wreningham, Norwich

This large open plan space offers a light and bright interior with far reaching views across the garden and a feature fireplace which creates a warming feel with an inset cast iron wood burner. The main sitting area is spacious with two full height windows to front, with the dining area enjoying bi-folding doors onto the rear garden, and the main kitchen expanse including a central island and breakfast bar. The island offers a contrast of solid wood work surfaces and composite work surfaces, with a full bank of useful storage to the far end of the kitchen including twin eye level electric ovens and a range of integrated appliances - a full height fridge, freezer and dishwasher. The kitchen sink sits in front of the garden window, the perfect space to enjoy the far reaching views whilst a door leads off to a useful utility room with a continuation of storage cupboards, space for laundry appliances and access to the garden and integral access to the garage. Designed with family living in mind, a hallway leads off the main living space where the three bedrooms can be found. Included within this space is recessed spot lighting, a light tunnel for natural light and a large walk-in airing cupboard housing the heating controls and useful shelved storage. The three bedrooms are all double in size with two currently interconnecting, with sliding pocket doors creating a dressing room if required. This could easily be filled in and reverted back to three self contained rooms if required. The front facing main bedroom includes built-in wardrobes and a walk-in en suite shower with striking aqua board splash-backs, further tiled walls and a heated towel rail. The family bathroom completes the property with a four piece white suite including storage under the sink, shower unit with aqua board splash backs, heated towel rail and useful recessed lighting on sensors.

FIND US

Postcode : NR16 1AR

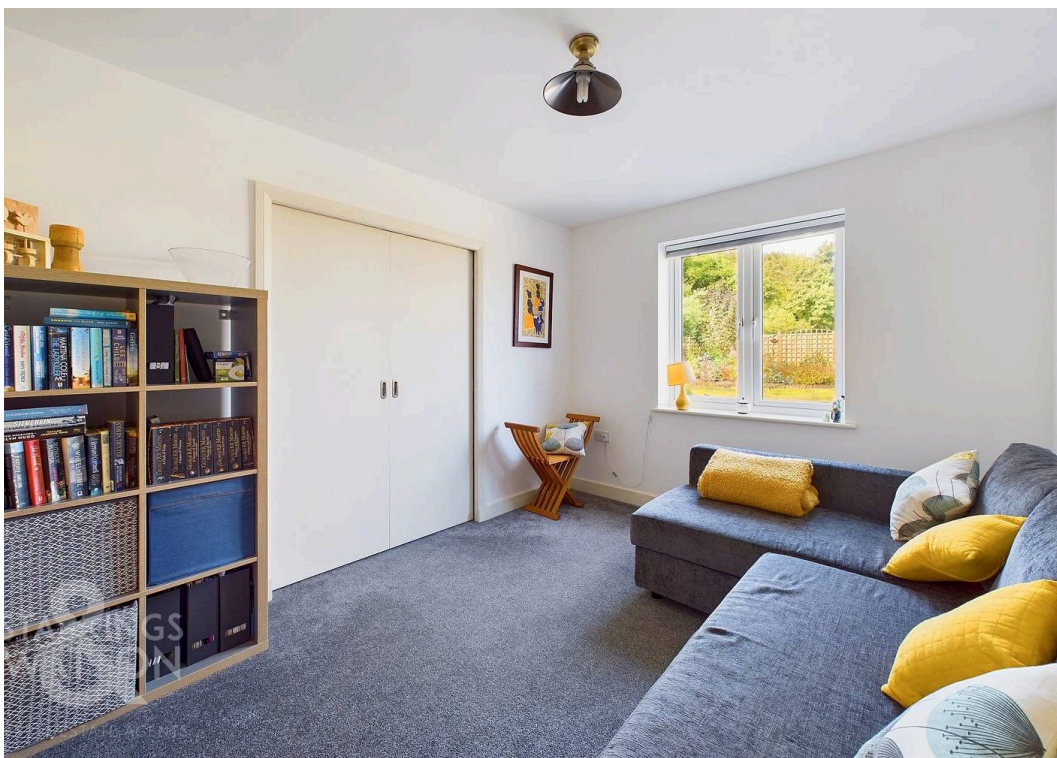
What3Words : ///chefs.lime.converged

VIRTUAL TOUR

View our virtual tour for a full 360 degree of the interior of the property.

**STARKINGS
& WATSON**

HYBRID ESTATE AGENTS





AGENTS NOTE

The property utilises a private sewerage treatment plant.

Garden

THE GREAT OUTDOORS The main rear garden has been fully landscaped to include a low level brick retaining wall, creating an area of patio which runs the full width of the property, and a further lawned garden beyond, enclosed with timber panel fencing. A raised decked seating area can be found to one side with gated access leading to the driveway. The gardens wrap around to the side of the property for access with a wide variety of mature planting, low level hedging, shrubbery, and raised planted beds. The integral garage includes an electric door to front, power and lighting.



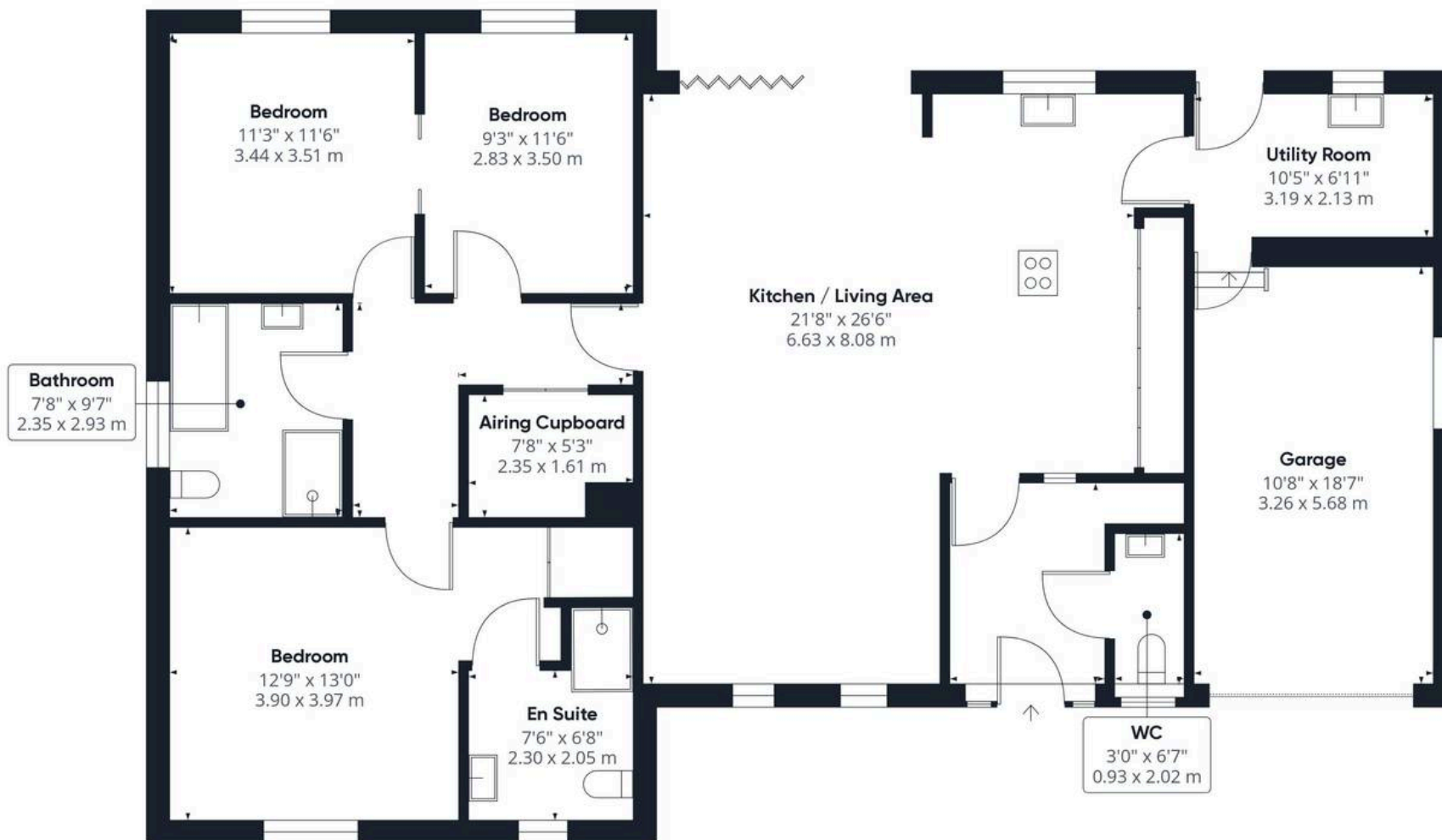
20:22

Enter virtual tour

STARKINGS & WATSON

starkingsandwatson.co.uk

SCAN HERE FOR A VIRTUAL TOUR



Approximate total area⁽¹⁾
1565.72 ft²
145.46 m²

(1) Excluding balconies and terraces

While every attempt has been made to ensure accuracy, all measurements are approximate, not to scale. This floor plan is for illustrative purposes only.

Calculations are based on RICS IPMS 3C standard.

GIRAFFE 360



Starkings & Watson Hybrid Estate Agents

46 Back Lane, Wymondham - NR18 0LB

01953 438838 • wymondham@starkingsandwatson.co.uk • starkingsandwatson.co.uk

Disclaimer: Whilst every care has been taken to prepare these sales particulars, they are for guidance purposes only. All measurements are approximate are for general guidance purposes only and whilst every care has been taken to ensure their accuracy, they should not be relied upon and potential buyers are advised to recheck the measurements.