



**11 Catmint Close, Swindon**  
Swindon

Offers Over **£200,000**

mcfarlane



## 11 Catmint Close

Swindon, Swindon

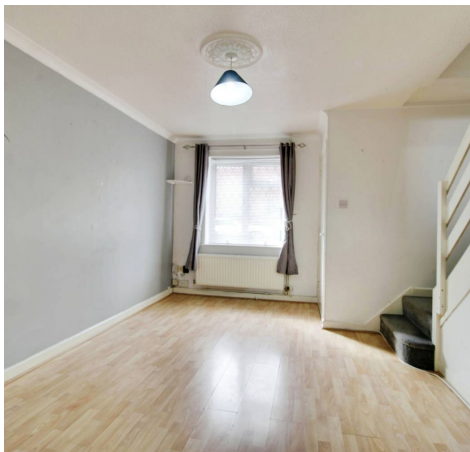
Step into this 2 Bedroom Terraced House with NO ONWARD CHAIN, nestled in a peaceful cul de sac location. The MID TERRACE property features 2 bedrooms, making it an IDEAL FIRST TIME BUY. The PRIVATE GARDEN perfect for relaxing outdoors, plus the convenience of ALLOCATED PARKING. The property does require some updating giving you the opportunity to put your own stamp on your first home. Call now to view

Tenure: Freehold

EPC Energy Efficiency Rating: C

EPC Environmental Impact Rating: C

- NO ONWARD CHAIN
- MID TERRACE
- 2 BEDROOMS
- IDEAL FIRST TIME BUY
- PRIVATE GARDEN
- ALLOCATED PARKING
- CUL DE SAC LOCATION





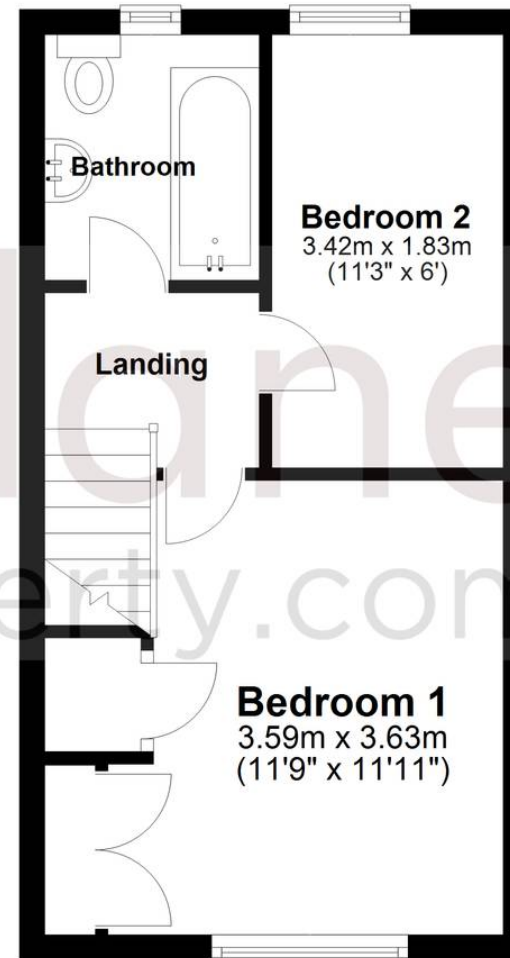
## Ground Floor

Approx. 26.9 sq. metres (289.9 sq. feet)



## First Floor

Approx. 25.8 sq. metres (277.8 sq. feet)



Total area: approx. 52.7 sq. metres (567.7 sq. feet)

## McFarlane Sales & Lettings

North Swindon, Redhouse Village Centre, Swindon - SN25 2FW

01793 296600 • [swindon@mcfarlaneproperty.com](mailto:swindon@mcfarlaneproperty.com) • [www.mcfarlaneproperty.com/](http://www.mcfarlaneproperty.com/)