



17 Southview Road, Southwick, West Sussex, BN42 4TW
Guide Price £325,000

17 Southview Road, Southwick, West Sussex, BN42 4TW

The Property & Area

A SUPERB 3-BEDROOM FLAT WITH PERIOD CHARM AND OFF-ROAD PARKING.

Welcome to this beautiful first and second-floor period apartment, perfectly situated in the sought-after Southview Road, Southwick. With a wealth of features and charm, excellent living spaces, and a convenient location, this is a brilliant apartment with private parking. As you step inside, you'll see the spacious and inviting interior that seamlessly blends modern comforts with classic character.

The heart of the home is undoubtedly the generously sized reception room, offering ample space for relaxing and entertaining. Large windows flood the room with natural light, emphasizing the beautiful period features such as decorative ceiling moldings and an elegant fireplace. This versatile space can easily accommodate both a comfortable lounge area and a formal dining setup.

The kitchen is a modern space complete with a range of appliances, storage options, and ample workspace.

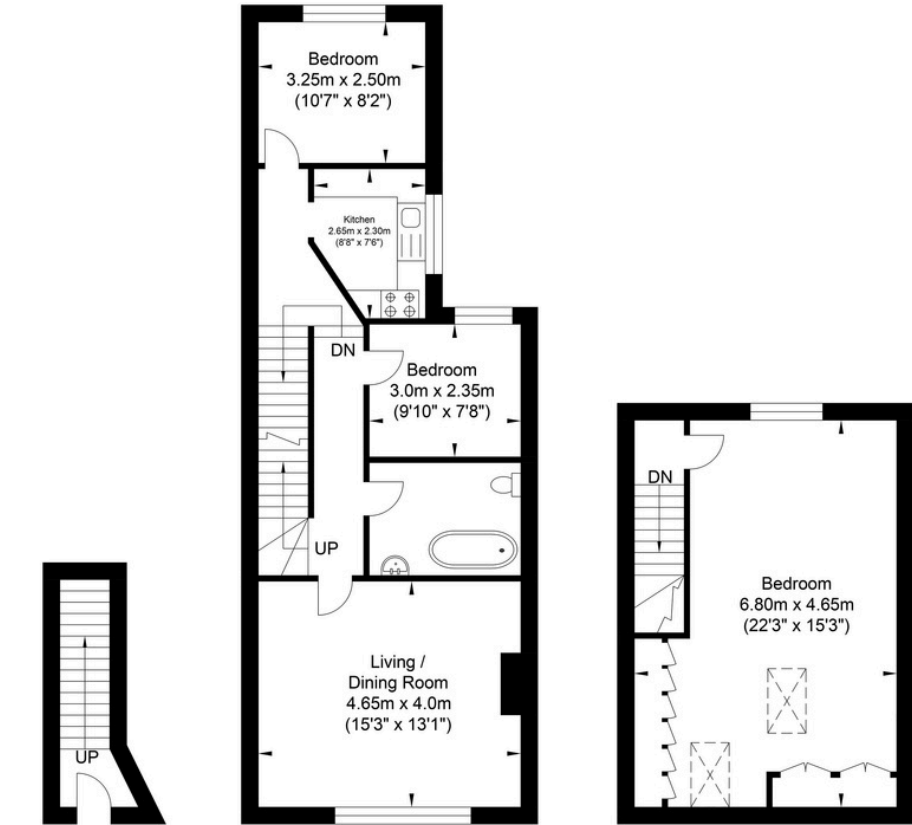
Additional highlights of this exceptional flat include off-road parking, ensuring you always have a dedicated space for your vehicle.

This rare sought-after feature provides convenience and peace of mind in a bustling area like Southwick. Also, the location of the property offers easy access to Southwick Green, where you can enjoy a stroll or a picnic in the park, and Southwick Train Station, perfect for commuting to nearby towns or London. Living in Southview Road means you'll be part of a popular and friendly community, surrounded by all the amenities you could desire. Shops, cafes, and restaurants are within easy reach, ensuring you have everything you need on your doorstep.

Additionally, the proximity to Kingston Beach allows you to enjoy leisurely walks or refreshing swims. For those needing to commute further afield, the easy access to the A27 opens up a host of possibilities. Whether you're heading to vibrant Brighton, charming Worthing, or even bustling London, the excellent transport links put you within easy reach of your destination. With its appealing features, convenient location, and ample living space, this property offers a fantastic opportunity for a comfortable and stylish lifestyle. Contact us today to arrange a viewing on 01273 661577



Southview Road, Southwick



Material Information:

Tenure - Share of Freehold

Lease length - 78 Years Remain (99 Years from 2003) **A new lease could be offered on completion.

Service Charge - 50/50 split with downstairs as and when maintenance is required and agreed.

Energy Performance Certificate

Score	Energy rating	Current	Potential
92+	A		
81-91	B		
69-80	C	78 C	78 C
55-68	D		
39-54	E		
21-38	F		
1-20	G		



Oakley

Your Sussex Property Expert

Shoreham Property Hub

01273 661 577

6 Brunswick Road, Shoreham BN43 5WB

www.oakleyproperty.com

shoreham@oakleyproperty.com

We also have offices in:

Lewes

Brighton & Hove

The London Office

Get in touch to book a viewing or valuation of your own property



Please note:
 These details have been produced in good faith and are believed to be accurate based upon the information supplied but they are not intended to form part of a contract. All statements contained in these particulars as to this property are made without responsibility on the part of Oakley, the vendors or lessors and are NOT to be relied on as statements or representations of fact. Any intending purchasers must satisfy themselves by inspection or otherwise as to the correctness of each of the statements contained in these particulars. The vendors, Oakley and any person who work in their employment do not have any authority to make or give any representation or warranty. The floor plan is for illustrative purposes only and the accuracy cannot be relied upon or guaranteed and no responsibility is taken for an error, omission or mis-statement. The total floor area shown has been taken from the EPC.