



50 Bulmer Lane, Winterton-On-Sea

£350,000 Freehold

This five-bedroom detached chalet bungalow, nestled within the enviable location of a desirable coastal village, presents an exceptional opportunity for those seeking to create their dream family home. Offered with the benefit of no onward chain, this property boasts a generous rear garden and ample off-road parking with a driveway and double garage.

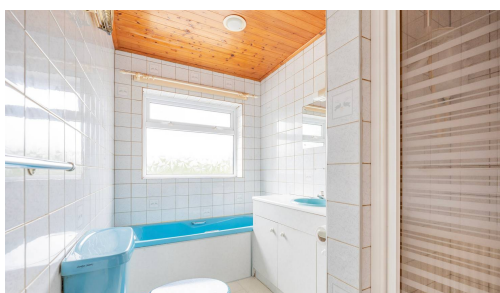
Location

Located in the picturesque village of Winterton-on-Sea, Bulmer Lane offers a charming coastal retreat in the heart of Norfolk. Known for its sandy beaches and unspoiled dunes, Winterton-on-Sea is a haven for nature lovers and those seeking tranquillity. The property is just a short walk from the scenic coastline, where visitors can enjoy peaceful walks, spot local wildlife, and explore the area's stunning natural beauty. With its close-knit community, quaint village amenities, and proximity to the larger town of Great Yarmouth, this location balances the serenity of rural life with convenient access to modern facilities. Ideal for holidaymakers, retirees, or anyone seeking a slice of coastal living, 50 Bulmer Lane captures the essence of Norfolk's serene and scenic charm.



Bulmer Lane

Upon entering through the utility room, you are welcomed into a well-appointed kitchen equipped with a range of wall and base units, a stainless steel sink, built-in electric appliances, and ample storage space. The kitchen seamlessly flows into the dining room which leads to the hall, providing access to the spacious sitting room, family bathroom, and three bedrooms on the ground floor.



The sitting room exudes comfort with French doors leading to the rear garden and a charming brick-built open fireplace, creating a cosy ambience for relaxation and gatherings. The family bathroom is fitted with a suite comprising a low-level WC, panelled bath, vanity washbasin, and a separate shower cubicle.

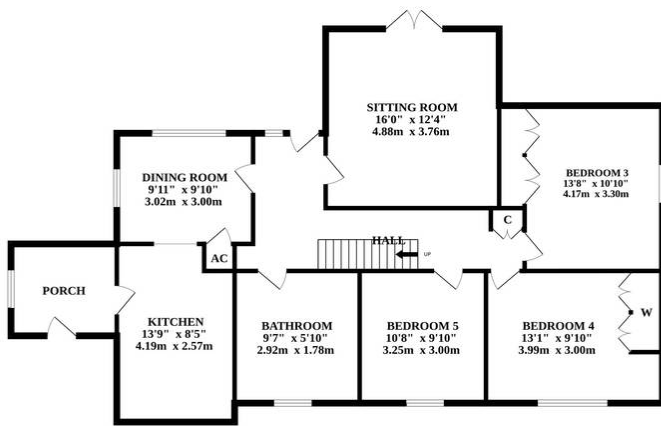
Ascending to the upper level, you will find two additional bedrooms with an abundance of eaves storage space, offering potential for conversion into a walk-in wardrobe and en-suite for the main bedroom. The property also features a double garage with a central partition wall, two up-and-over doors, power, lighting, and a WC, providing practical storage or workspace options.

Outside, the property benefits from a generous south-facing rear garden showcasing a well-proportioned lawned area with established shrubs and hedging. The driveway and double garage provide off-road parking for multiple vehicles, ensuring convenience and security. The double garage includes a central partition wall, two up and over metal doors to front, a personal door to side, low level wc and wall mounted hand wash basin, as well as attic storage space which has the potential to be converted into an annexe (stpp).

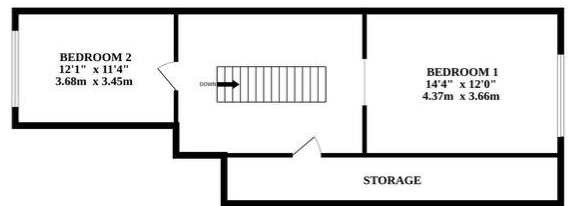
Offering a rare opportunity to transform this property into a bespoke family retreat, this charming detached bungalow encapsulates the essence of comfortable coastal living. Don't miss the chance to make this property your own and create a haven for generations to come.



GROUND FLOOR



1ST FLOOR



Whilst every attempt has been made to ensure the accuracy of the floorplan contained here, measurements of doors, windows, rooms and any other items are approximate and no responsibility is taken for any error, omission or mis-statement. This plan is for illustrative purposes only and should be used as such by any prospective purchaser. The services, systems and appliances shown have not been tested and no guarantee as to their operability or efficiency can be given.
Made with Metropix ©2024

You can include any text here. The text can be modified upon generating your brochure.