



**Horizon West 601, La Rue de L'etau,, St. Helier**  
**£425,000**

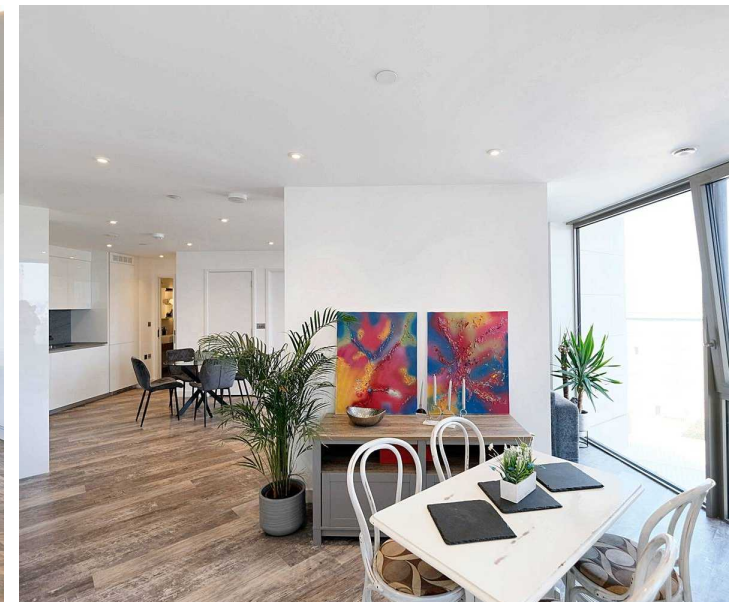
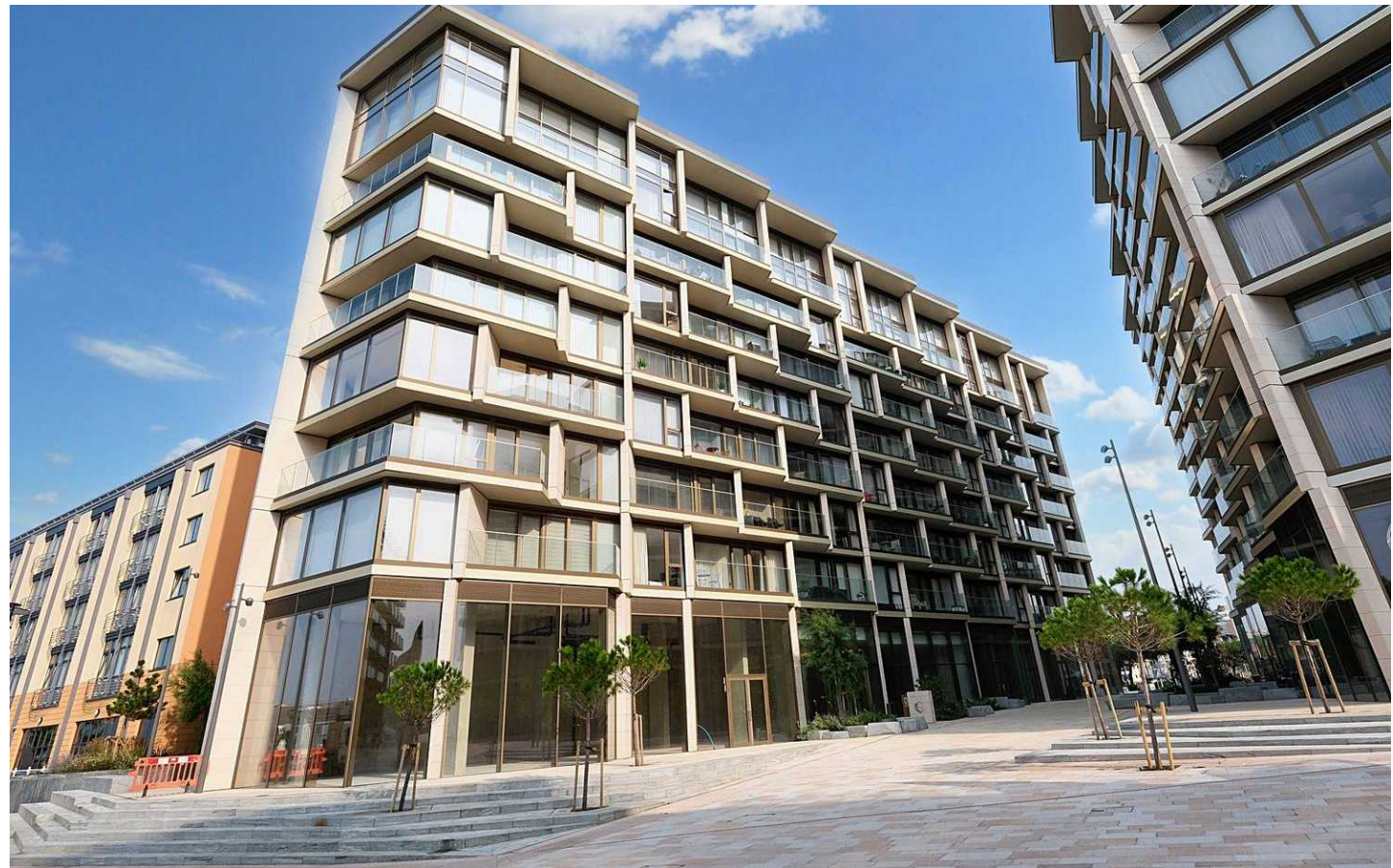
**BROADLANDS**  
FINDING YOU A HOME SINCE 1972



# Horizon West 601, La Rue de L'etau,

St. Helier, Jersey

- Rare larger one bedroom Horizon apartment 602 sq ft
- Amazing views over St Aubin's Bay and beyond
- 2 balconies ideal for watching the sunset
- 6th Floor with lift access
- Modern open plan living area
- Landmark Marina Development
- Short commute to work
- Only recently been built
- Sole agent
- Please call Doug 07700702585 or [doug@broadlandsjersey.com](mailto:doug@broadlandsjersey.com)





## Horizon West 601, La Rue de L'etau,

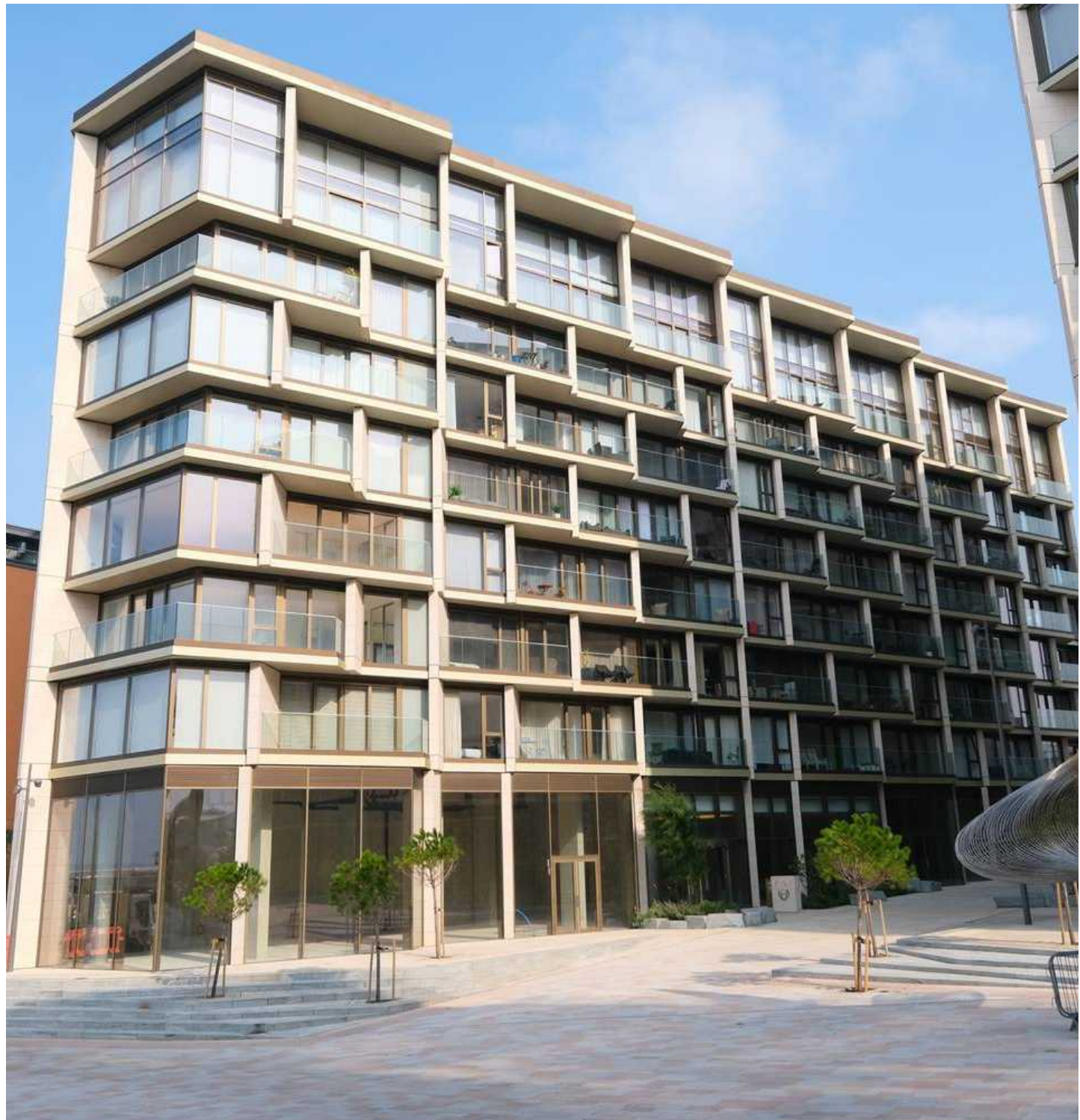
St. Helier, Jersey

This stunning west-facing, one-bedroom apartment in the prestigious Horizon West development is located on the 6th floor with amazing sea views across St Aubin's Bay and beyond.

Spanning a generous 602 sq ft, one of only three one-bedroom apartments of this larger size—it's ideal for those seeking luxury living by the waterfront. Recently built, the apartment features a spacious, modern open-plan living area with a modern fully fitted kitchen with integrated appliances. The large double bedroom includes fitted wardrobes and a contemporary house bathroom. With two balconies, ideal for watching the sunset.

Perfectly suited for young professionals, investors, downsizers, or those seeking a lock-up-and-leave lifestyle.

Horizon West is a landmark development on the Waterfront, surrounded by a vibrant new community with shops, restaurants, and public spaces, all within easy reach of St Helier's business district. Broadlands are delighted to be sole agents.







### **Living**

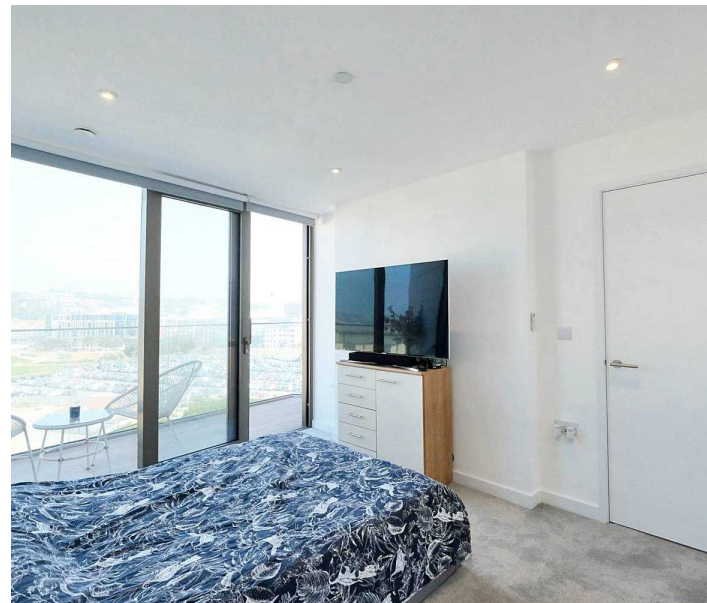
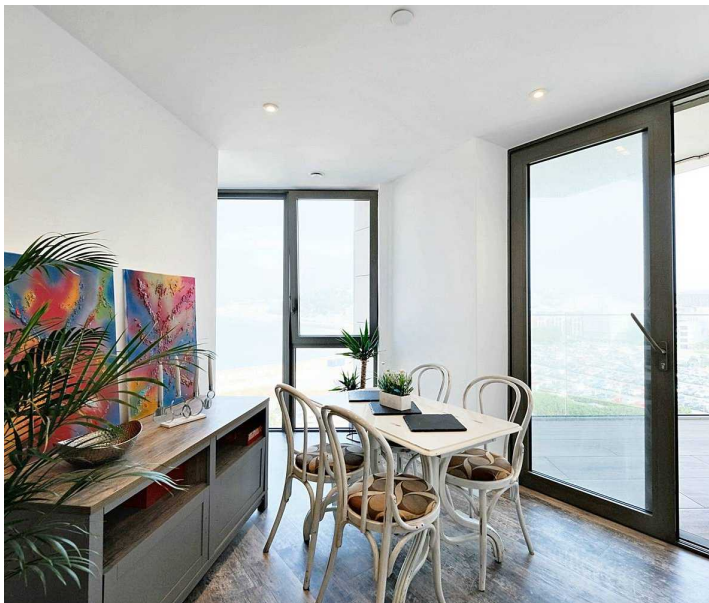
Modern open plan living area with stunning new kitchen with full range of integrated appliances. Utility cupboard housing washing machine.

### **Sleeping**

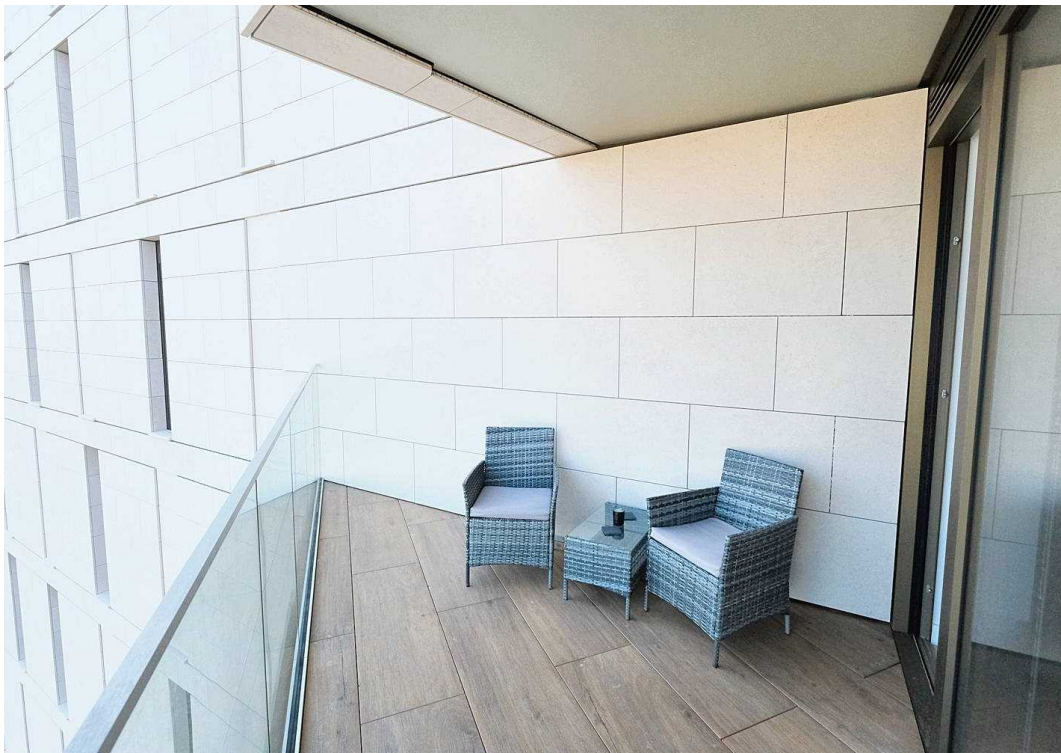
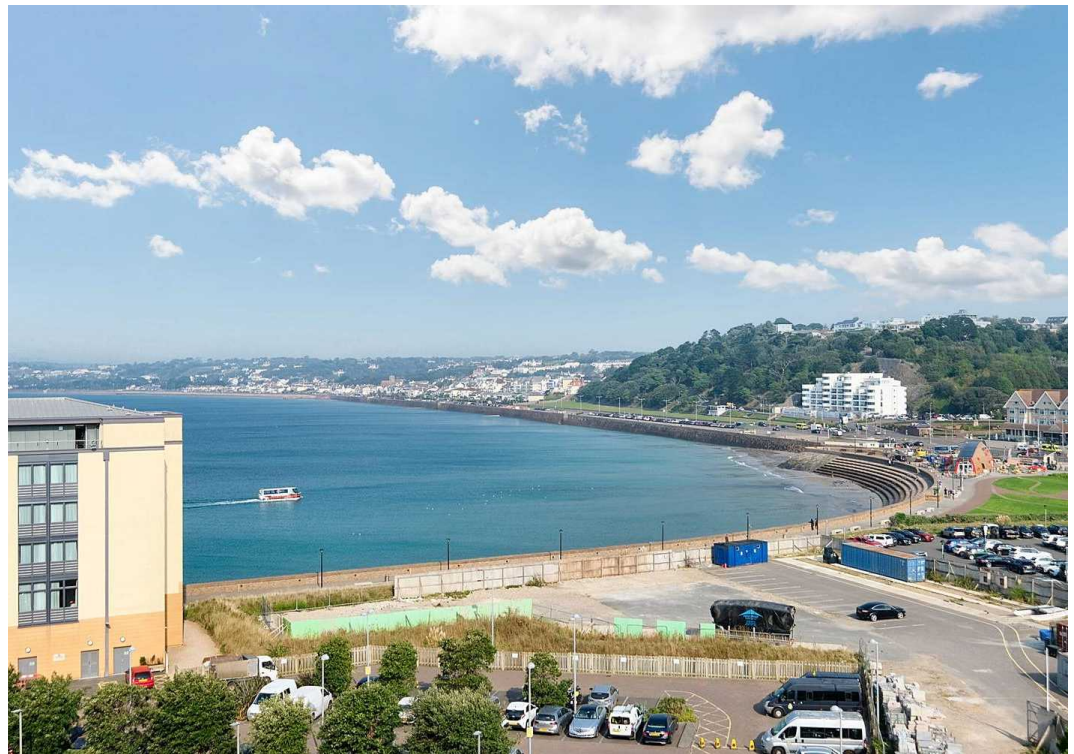
Generous double bedroom and a stunning house bathroom.

### **Services**

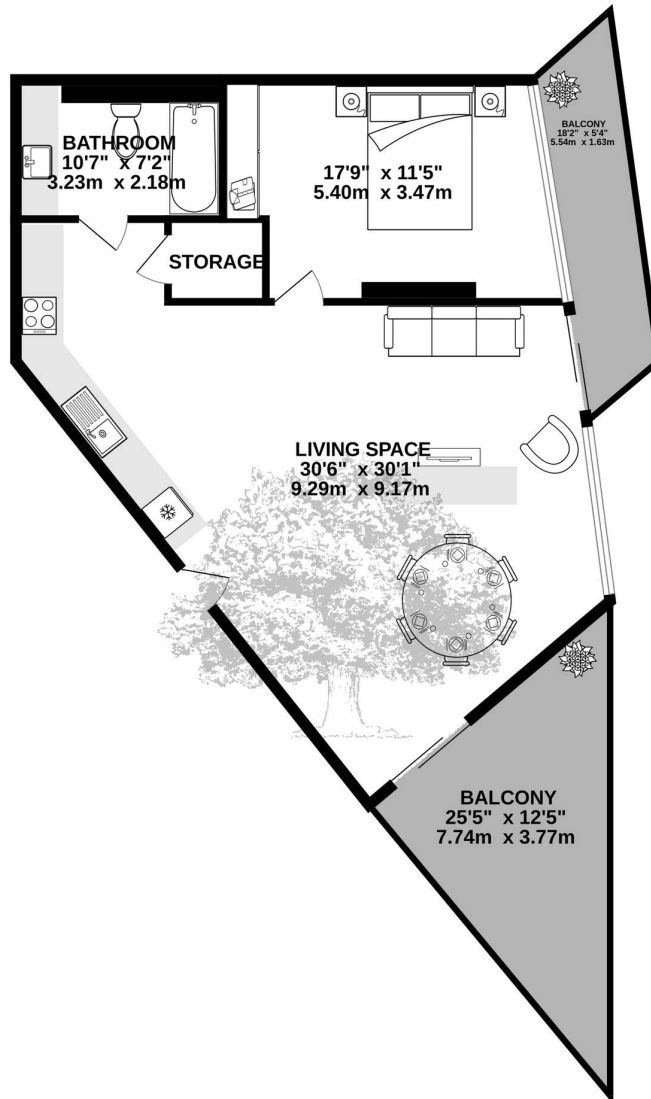
All mains services and electric heating. Service charge of £260 pcm to include: building maintenance, building insurance, communal electric, water and parish rates. Lift access and private concierge.







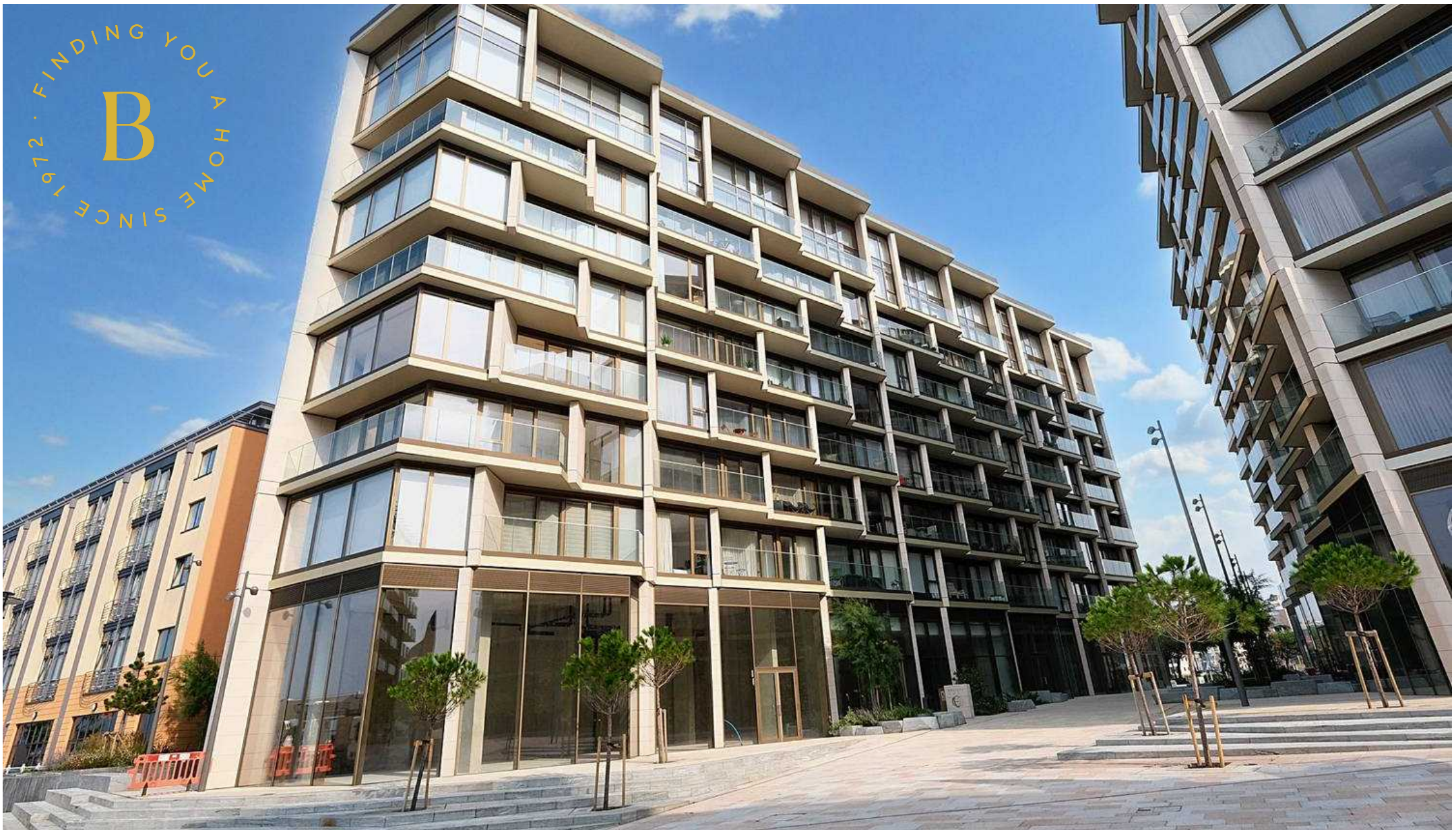
GROUND FLOOR  
603 sq.ft. (56.0 sq.m.) approx.



TOTAL FLOOR AREA : 603 sq.ft. (56.0 sq.m.) approx.

Whilst every attempt has been made to ensure the accuracy of the floorplan contained here, measurements of doors, windows, rooms and any other items are approximate and no responsibility is taken for any error, omission or mis-statement. This plan is for illustrative purposes only and should be used as such by any prospective purchaser. The services, systems and appliances shown have not been tested and no guarantee as to their operability or efficiency can be given.  
Made with Metropix ©2024





## Broadlands

Broadlands Estates, Library Place - JE2 3NL

01534 880770 • [enquiries@broadlandsjersey.com](mailto:enquiries@broadlandsjersey.com) • [www.broadlandsjersey.com/](http://www.broadlandsjersey.com/)

# BROADLANDS

FINDING YOU A HOME SINCE 1972