

Mallens Croft

Bramshall, Uttoxeter, ST14 5NG

John 
German





Mallens Croft

Bramshall, Uttoxeter, ST14 5NG

Asking Price Of £399,995

Attractive modern executive style detached home providing well proportioned and remodelled family sized accommodation, occupying a pleasant corner plot in this highly regarded and sought after village.

John German 

Whether looking to move up or down the property ladder, internal inspection and consideration of this well maintained and generously sized family home is essential to appreciate its layout which includes the open plan living dining kitchen and the balance between the ground floor living space and bedroom sizes along with its enclosed garden plus the exact position in this popular village.

The current owners have invested a considerable amount of time and money into the property during their guardianship including a replacement conservatory with a warm roof and bi-folding doors, a replacement boiler with a Nest Wi-Fi thermostat (approximately 5 years old), replacement windows and doors, a refitted family bathroom within the last year, external re-landscaping to provide an expanded enclosed rear garden, ample parking to the front and outside storage.

Situated in this highly regarded and popular village within walking distance to its amenities which include the active village hall, Sargeant's Butchers and adjoining shop, picturesque church and multiple walks through surrounding countryside. Uttoxeter and its wide range of facilities are only a short drive or brisk walk away including supermarkets and independent shops, public houses and restaurants, coffee houses and bars, schools, doctor's surgeries, train station, modern leisure centre and the multi screen cinema. The nearby A50 dual carriageway links the M1 and M6 motorways plus the cities of Derby and Stoke on Trent.

Accommodation - A replacement part obscure double glazed entrance door opens to the welcoming hall providing a lovely introduction to the home with stairs rising to the first floor with an under stairs cupboard. Doors lead to the spacious ground floor accommodation and the fitted guest's cloakroom/WC.

The well proportioned lounge extends to the depth of the property having a focal wall mounted living flame effect electric fire and a front facing window. Wide uPVC double glazed sliding patio doors open to the replacement uPVC double glazed constructed conservatory which benefits from underfloor heating and an insulated roof providing an additional living space that can be used all year round. It enjoys a view of the garden and has bi-fold doors opening to the patio.

The real hub of this home is the open plan living dining kitchen that also extends to the full depth of the property with dual aspect windows providing ample natural light. To the rear of the room the kitchen has a range of base and eye level units with work surfaces and a matching breakfast bar, inset sink unit set below the window overlooking the garden, a fitted electric hob with an extractor hood over and double oven under, an integrated fridge freezer and dishwasher plus plumbing for a washing machine. Towards the front is the dining living area providing ample space for both a dining suite and soft seating.

Completing the ground floor accommodation is the breakfast room that presently has matching fitted units to one side with a work surface and integrated wine cooler, a door into the garage and a part double glazed door and window to the garden.

To the first floor the landing has a built in airing cupboard and doors to the four bedrooms, three of which can easily accommodate a double bed and benefitting from built in wardrobes with the fourth bedroom currently utilised as a dressing room having fitted wardrobes to one side. The spacious master has its own en suite shower room fitted with a white suite incorporating a corner shower cubicle with a mixer shower over.

Finally there is the impressive refitted family bathroom having a white suite incorporating a panelled bath with a mixer tap and shower attachment plus complementary tiled splash backs.



Outside - To the rear a wide paved patio and further gravelled seating area provides a delightful entertaining area leading to the good sized garden which is mainly laid to lawn with well stocked shrub borders and pleached trees positioned to provide additional privacy space for a playhouse and a useful timber built shed at the side. On the opposite side there is gated access to the front which has a wide concrete print driveway and gravelled hardstanding providing ample off road parking for several vehicles with an established hedge to two sides and two trees. The garage has an up and over door, power and direct access into the home.

what3words: thrones.flock.emotional

Tenure: Freehold (purchasers are advised to satisfy themselves as to the tenure via their legal representative).

Please note: It is quite common for some properties to have a Ring doorbell and internal recording devices.

Property construction: Standard

Parking: Drive & garage

Electricity supply: Mains

Water supply: Mains

Sewerage: Mains

Heating: Gas

(Purchasers are advised to satisfy themselves as to their suitability).

Broadband type:

See Ofcom link for speed: <https://checker.ofcom.org.uk/>

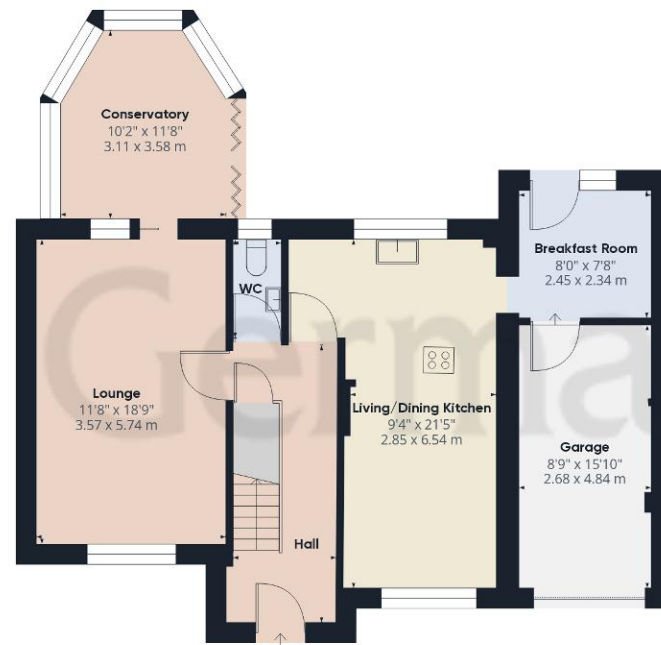
Mobile signal/coverage: See Ofcom link <https://checker.ofcom.org.uk/>

Local Authority/Tax Band: East Staffordshire Borough Council / Tax Band E

Useful Websites: www.gov.uk/government/organisations/environment-agency

Our Ref: JGA/23092024



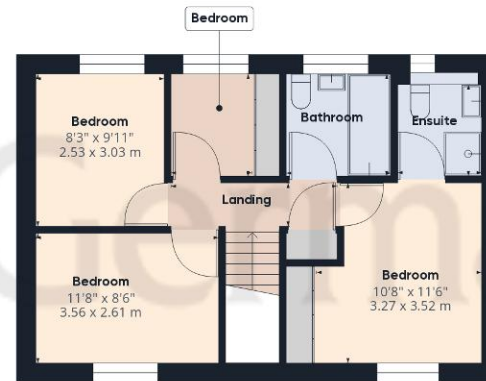


Ground Floor

Approximate total area⁽¹⁾

1367.34 ft²

127.03 m²



Floor 1

(1) Excluding balconies and terraces

While every attempt has been made to ensure accuracy, all measurements are approximate, not to scale. This floor plan is for illustrative purposes only.

Calculations are based on RICS IPMS 3C standard.

GIRAFFE360



The property information provided by John German Estate Agents Ltd is based on enquiries made of the vendor and from information available in the public domain. If there is any point on which you require further clarification, please contact the office and we will be pleased to check the information for you, particularly if contemplating travelling some distance to view the property. Please note if your enquiry is of a legal or structural nature, we advise you to seek advice from a qualified professional in their relevant field.

Agents' Notes

These particulars do not constitute an offer or a contract neither do they form part of an offer or contract. The vendor does not make or give and Messrs. John German nor any person employed has any authority to make or give any representation or warranty, written or oral, in relation to this property. Whilst we endeavour to make our sales details accurate and reliable, if there is any point which is of particular importance to you, please contact the office and we will be pleased to check the information for you, particularly if contemplating travelling some distance to view the property. None of the services or appliances to the property have been tested and any prospective purchasers should satisfy themselves as to their adequacy prior to committing themselves to purchase.

Referral Fees

Mortgage Services - We routinely refer all clients to APR Money Limited. It is your decision whether you choose to deal with APR Money Limited. In making that decision, you should know that we receive on average £60 per referral from APR Money Limited.

Conveyancing Services - If we refer clients to recommended conveyancers, it is your decision whether you choose to deal with this conveyancer. In making that decision, you should know that we receive on average £150 per referral.

Survey Services - If we refer clients to recommended surveyors, it is your decision whether you choose to deal with this surveyor. In making that decision, you should know that we receive up to £90 per referral.

Score	Energy rating	Current	Potential
92+	A		
81-91	B		82 B
69-80	C		
55-68	D	62 D	
39-54	E		
21-38	F		
1-20	G		



John German

9a Market Place, Uttoxeter, Staffordshire, ST14 8HY

01889 567444

uttoxeter@johngerman.co.uk

Ashbourne | Ashby de la Zouch | Barton under Needwood
Burton upon Trent | Derby | East Leake | Lichfield
Loughborough | Stafford | Uttoxeter

JohnGerman.co.uk Sales and Lettings Agent



