



## 17 Silverdale Avenue, Irlam

£219,995 Leasehold

Great first time buyer home • Three bedrooms • Semi detached • Large garage



Fantastic opportunity for first-time buyers with inviting lounge, fitted kitchen, 3 bedrooms, off-road parking, spacious rear gardens, and large garage offering storage or workshop space. Create your own oasis in this versatile outdoor area.

Council Tax band: B

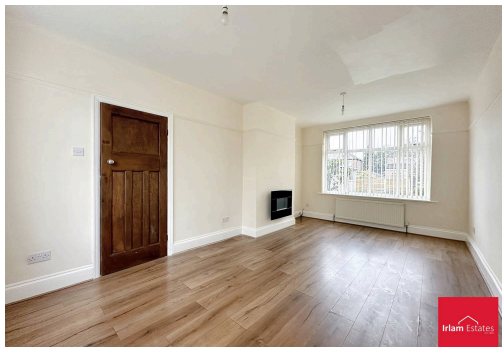
Tenure: Leasehold

EPC Energy Efficiency Rating: D

EPC Environmental Impact Rating: D



- › Great first time buyer home
- › Three bedrooms
- › Semi detached
- › Large garage

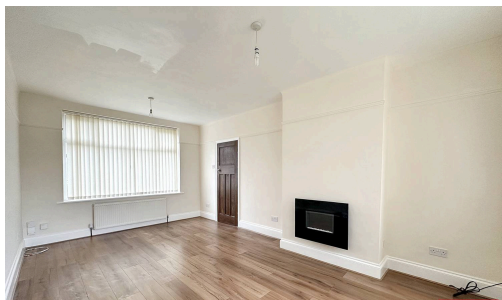


Council Tax band: B

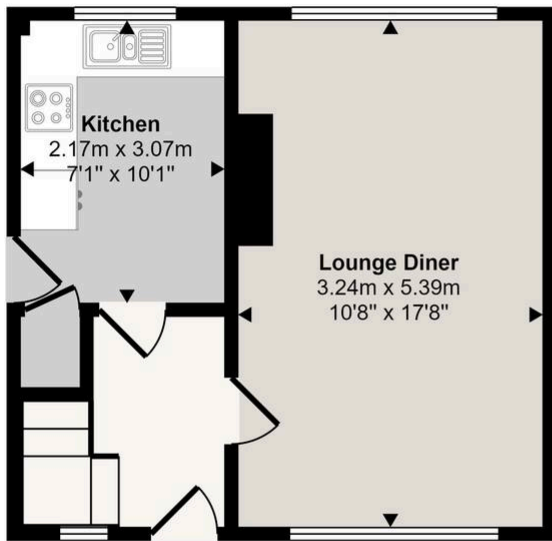
Tenure: Leasehold

EPC Energy Efficiency Rating: D

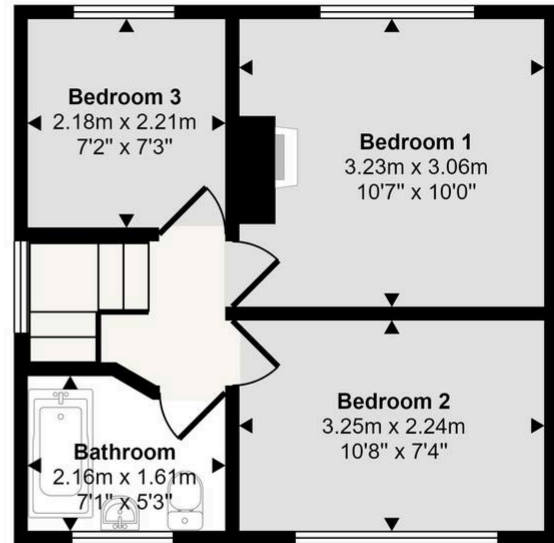
EPC Environmental Impact Rating: D



Approx Gross Internal Area  
60 sq m / 650 sq ft



Ground Floor  
Approx 30 sq m / 325 sq ft



First Floor  
Approx 30 sq m / 325 sq ft

This floorplan is only for illustrative purposes and is not to scale. Measurements of rooms, doors, windows, and any items are approximate and no responsibility is taken for any error, omission or mis-statement. Icons of items such as bathroom suites are representations only and may not look like the real items. Made with Made Snappy 360.

You can include any text here. The text can be modified upon generating your brochure.