



**7 New Road, Purton – SN5 4HF**  
Wiltshire

Guide Price **£375,000**

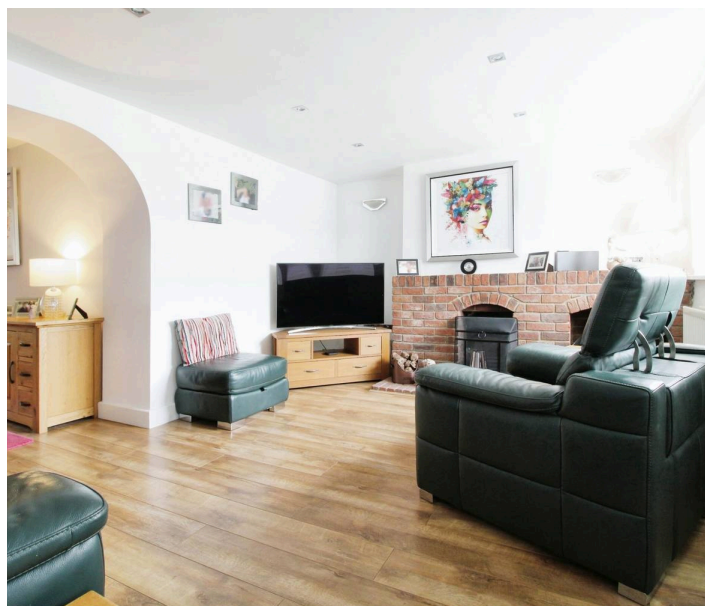
**mcfarlane**  
property.com

## 7 New Road

Purton, Wiltshire

Modernised and Extended Three Double Bedroom Stone Built Cottage located on the edge of Purton. Entrance Hallway, Living Room, Family Room, Dining Room. Kitted Kitchen, Utility and Cloakroom. Three DOUBLE BEDROOMS plus Family Bathroom and En-Suite Shower Room. Rear Gardens & Off Road Parking.

- Stunning Stone Built Cottage
- Deceptively Spacious Cottage
- Semi Rural Setting
- Three Reception Areas
- Three Double Bedrooms
- Expansive Private Rear Gardens
- Master Bedroom with En-Suite
- Updated & Greatly Improved



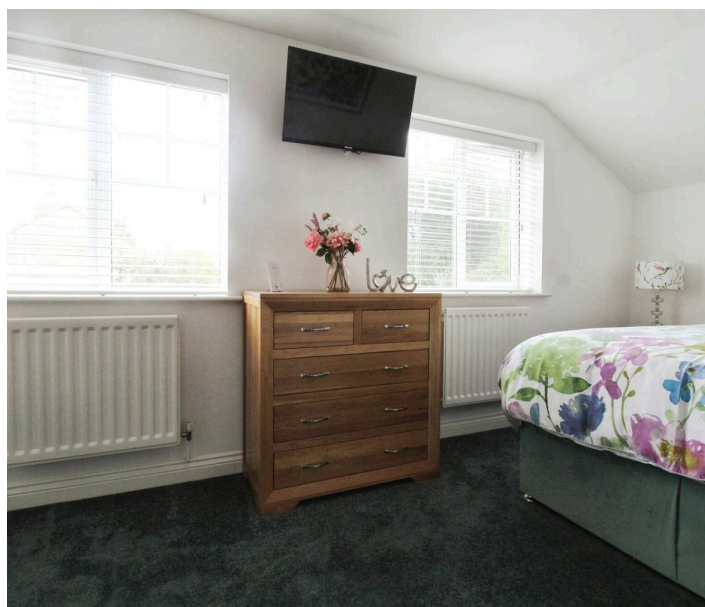
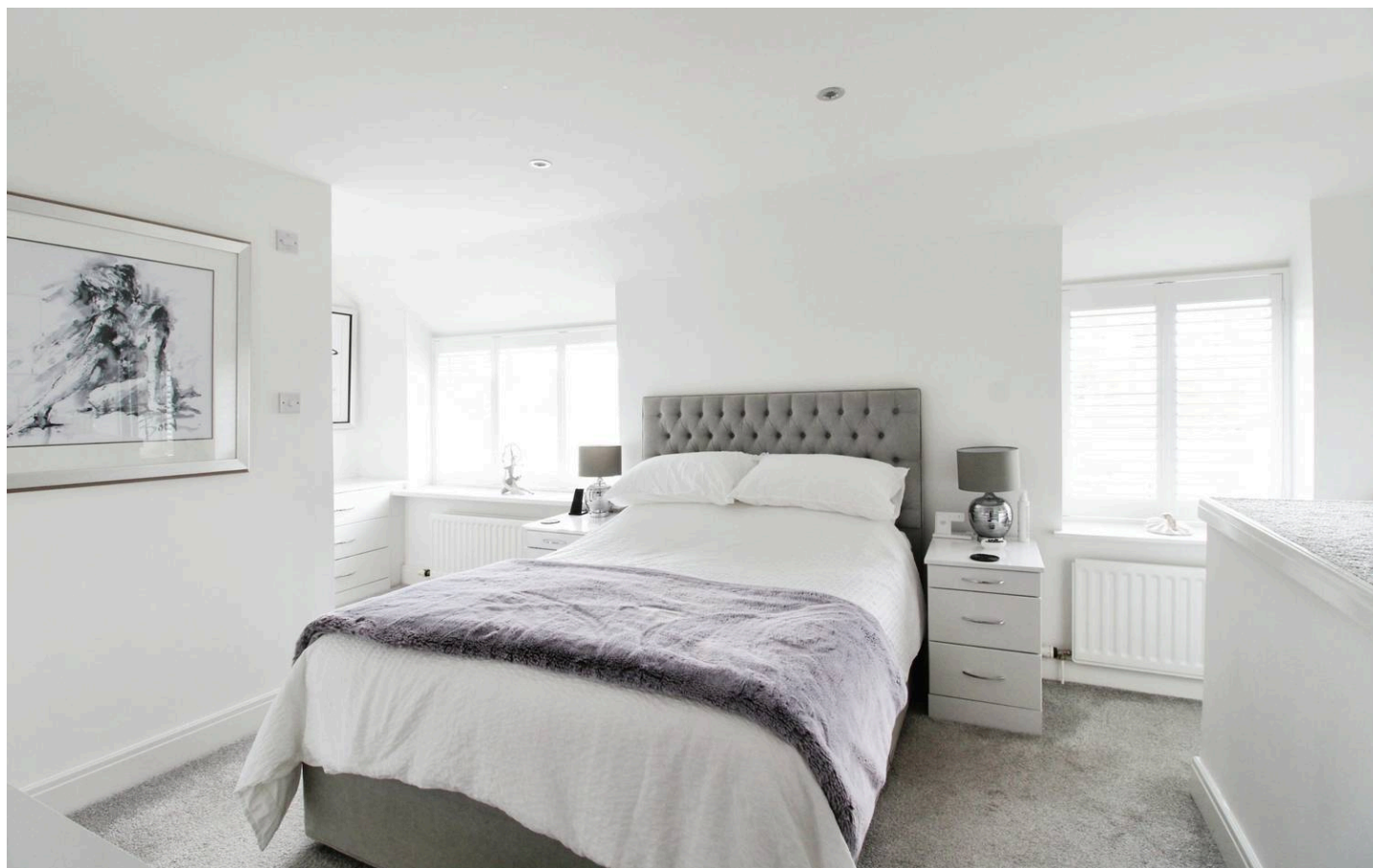
## New Road

Purton, Wiltshire

Located on the outskirts of Purton approximately 4 miles South of Cricklade High Street and 6.5 miles East of Central Swindon.

Council Tax band: C

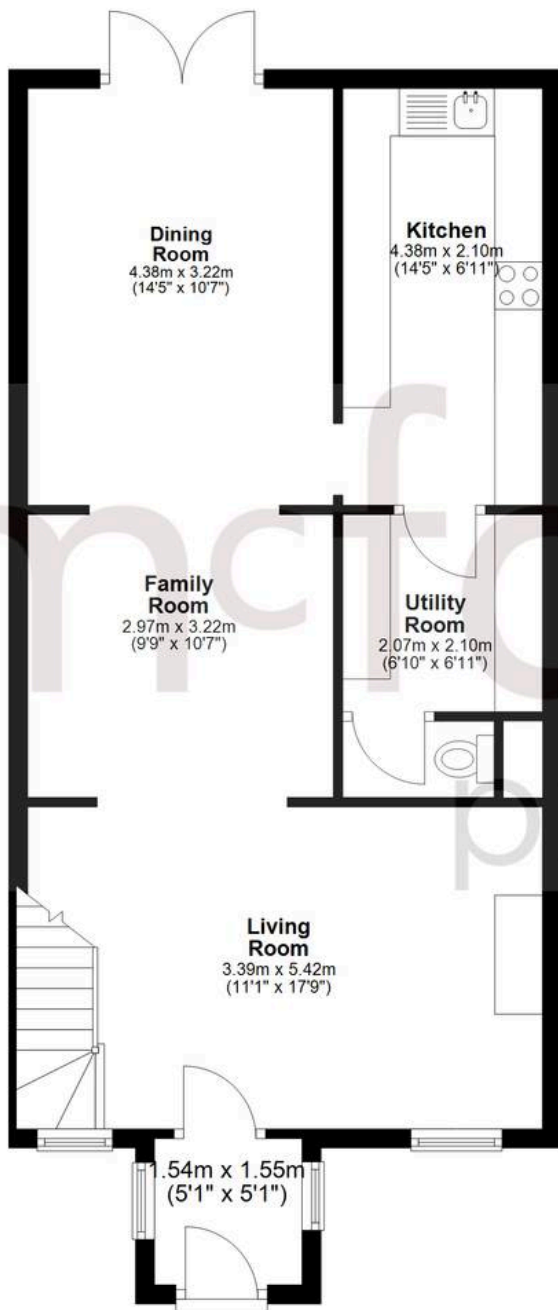
Tenure: Freehold



**mcfarlane**  
property.com

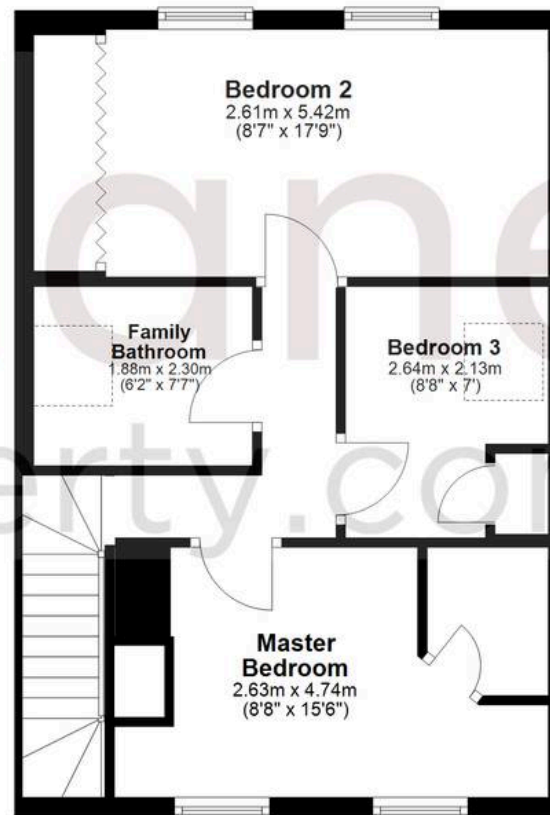
## Ground Floor

Approx. 61.8 sq. metres (665.3 sq. feet)



## First Floor

Approx. 43.7 sq. metres (470.8 sq. feet)



Total area: approx. 105.5 sq. metres (1136.1 sq. feet)

Agents Note: Whilst every care has been taken to prepare these sales particulars, they are for guidance purposes only. All measurements are approximate and for general guidance purposes only and whilst every care has been taken to ensure their accuracy, they should not be relied upon and potential buyers are advised to recheck the measurements.