



50 Adelaide Street | Stonehouse | Plymouth | PL1 3JE

Guide £120,000-£130,000

An immaculate ground floor flat situated within a central location.

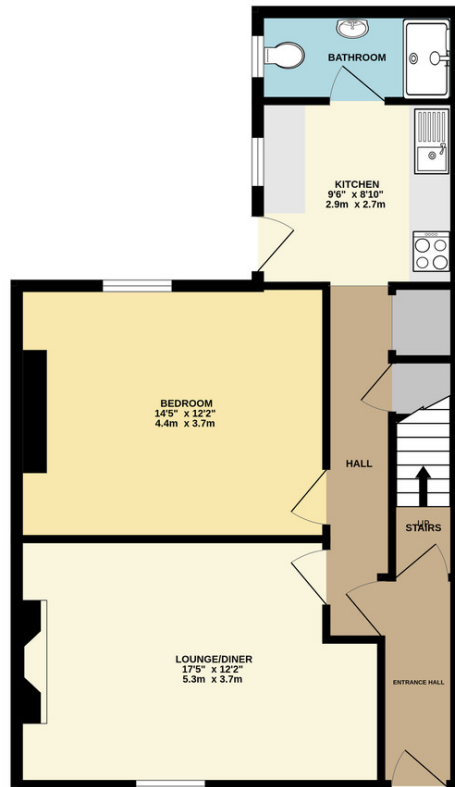
This spacious one bedroom property offers much character and charm, as well as a fitted kitchen, modern shower room, gas central heating system, rear courtyard and parking. Accommodation comprises; entrance hall with under-stairs storage, lounge / diner, kitchen, shower room, southerly courtyard and off road parking. The flat is within walking distance of Plymouth City Centre, The Royal William Yard, Firestone Bay and within easy reach of Mount Edgcombe County Park via the Cremyll Ferry.

The flat has recently been re-furbished throughout and has a proven rental income.

- Ground Floor Flat
- Spacious One Bedroom
- Recently Refurbished
- Gas Central Heating
- Some Upvc Double Glazing
- Southerly Rear Courtyard
- Off Road Parking
- Close To All Facilities



GROUND FLOOR
616 sq.ft. (57.3 sq.m.) approx.



Contact Details

48 Ebrington Street
Plymouth
Devon
PL4 9AD

www.athomelettings.com
info@athomeproperty.co.uk
01752 777070

Energy Efficiency Rating		
	Current	Potential
<i>Very energy efficient - lower running costs</i>		
(92+) A		
(81-91) B		
(69-80) C		
(55-68) D	59	67
(39-54) E		
(21-38) F		
(1-20) G		
<i>Not energy efficient - higher running costs</i>		
England & Wales	EU Directive 2002/91/EC	

Agents Note: Whilst every care has been taken to prepare these sales particulars, they are for guidance purposes only. All measurements are approximate are for general guidance purposes only and whilst every care has been taken to ensure their accuracy, they should not be relied upon and potential buyers are advised to recheck the measurements