



**2 bedroom
Detached
Bungalow
located in
Brightlingsea.**

Guide Price
£400,000 - £425,000

Find us on..



JOHN ALEXANDER
ESTATE AGENTS

Plot 2, Weavers Close Church Road Brightlingsea Colchester CO7 0QT



2



2



1



EPC

TBC



FULL DESCRIPTION

THE HOME

GUIDE PRICE £400,000 TO £425,000

Welcome to Weavers Close, an extraordinary collection of five beautifully crafted two and three-bedroom bungalows, ideally situated in the coveted coastal town of Brightlingsea, just a stone's throw from Colchester. John Alexander is proud to present this exceptional two-bedroom bungalow, a true embodiment of comfort, style, and modern living.

From the moment you approach Weavers Close, it's clear that these bungalows stand apart. Thoughtfully crafted by the esteemed Isla Homes Group, recognised for their commitment to high quality and innovative design, every element of these residences has been meticulously planned. The architecture combines contemporary aesthetics with a touch of elegance, creating a striking facade that welcomes you home.

You are greeted with spacious interiors bathed in natural light. The open-plan living spaces are designed for both comfort and functionality, perfect for modern living or entertaining guests. The elegantly appointed kitchens feature top-of-the-line appliances, sleek finishes, and ample storage, making it a joy to prepare meals or entertain friends. Generous dining areas provide a seamless transition from kitchen to living space, encouraging a flow that enhances social interaction.

The thoughtfully designed bedrooms offer a tranquil escape, with the master suite often featuring its own en-suite bathroom, ensuring a perfect retreat at the end of the day.

Outside, the bungalow is complemented by a carefully

landscaped garden, creating serene outdoor spaces for relaxation and leisure.

DIMENSIONS

Living/Dining Room

3.56m x 5.9m (11' 8" x 19' 4")

Kitchen Area

4.11m x 3.78m (13' 6" x 12' 5")

Master Bedroom

3.43m x 3.96m (11' 3" x 13' 0")

En Suite

2.2m x 1.47m (7' 3" x 4' 10")

Bedroom Two

4.06m x 3.07m (13' 4" x 10' 1")

Bathroom

2.26m x 2m (7' 5" x 6' 7")

Garage

2.95m x 5.74m (9' 8" x 18' 10")



LOCATION

Nestled on the Essex coast, Brightlingsea town is a picturesque escape, surrounded by natural beauty. Its quaint streets offer a variety of dining, pub, and shopping experiences. Enjoy fresh seafood with harbour views

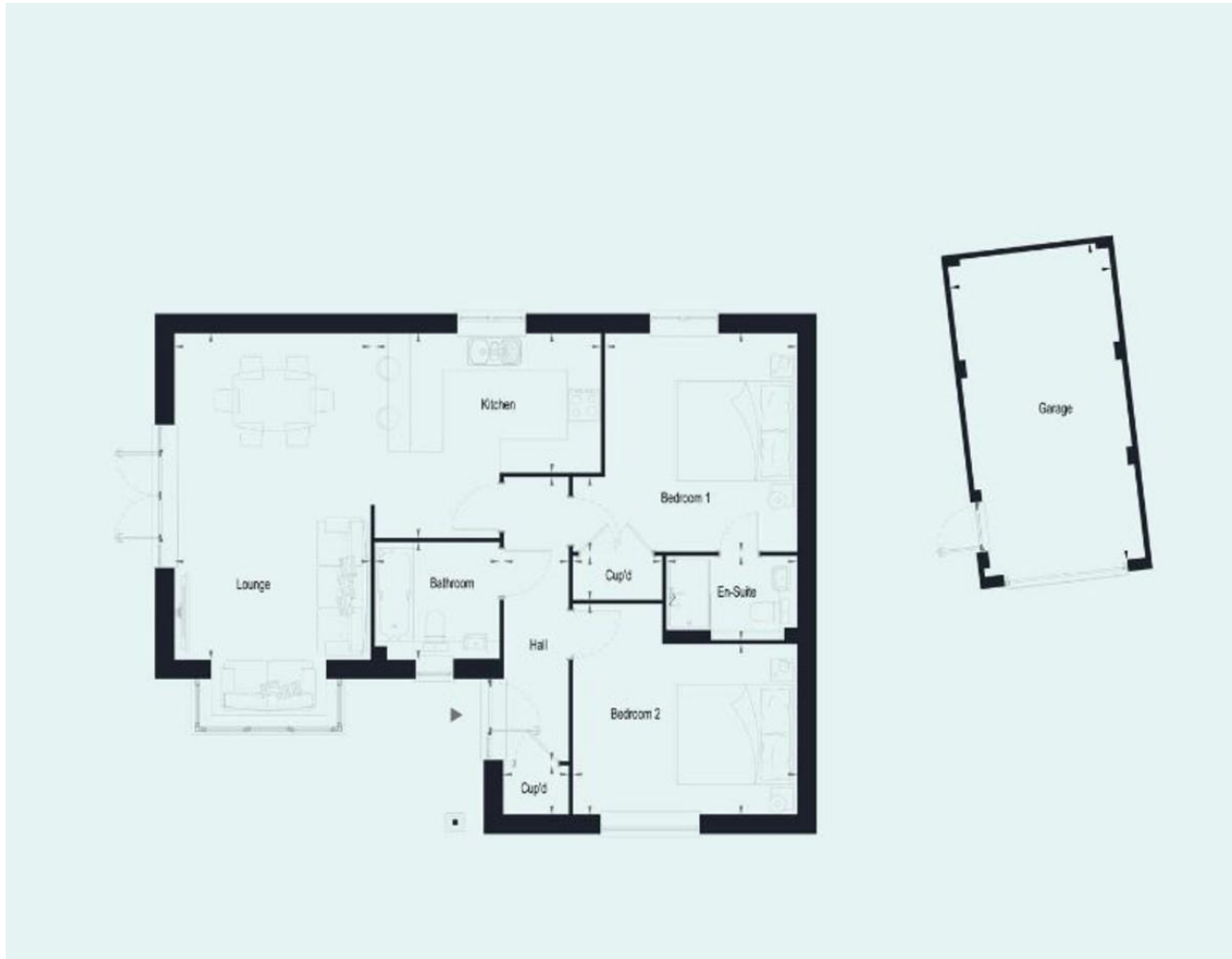
at waterfront restaurants or unwind in cosy English pubs, where you'll find both good food and a warm sense of community.

The town's boutique, shops and artisanal stores cater to all tastes, offering unique crafts, nautical-themed treasures, and fashionable clothing.

As you explore, the stunning coastal backdrop enhances your experience, making it the ideal place for leisurely strolls, culinary adventures, and shopping excursions. Experience the charm of Brightlingsea, where coastal beauty, delectable dining, and retail therapy combine seamlessly.



FLOORPLAN



DIRECTIONS

CONTACT

**99 London Road
Stanway
Colchester
Essex
CO3 0NY**

E sales@john-alexander.co.uk

T 01206 656007

www.john-alexander.co.uk

Find us on..



JOHN ALEXANDER
ESTATE AGENTS