



2 St. Georges Cottages Brighton Road, Handcross

Guide Price £455,000

2 St. Georges Cottages

Handcross, Haywards Heath

Introducing this well-appointed 4-bedroom mid-terraced house, a contemporary gem boasting a modern construction built in 2017. Offering a seamless blend of style and functionality, this property embodies a harmonious blend of comfort and convenience, perfect for those seeking a contemporary living experience.

Upon entering, one is greeted by a spacious layout that effortlessly accommodates the demands of modern living. The ground floor features an inviting open plan kitchen/dining/family room which serves as the heart of the home, ideal for entertaining guests or enjoying quality time with family. The sleek kitchen is equipped with modern appliances and ample storage space, ensuring both style and practicality.

The property has four generously sized bedrooms, offering flexibility for a growing family or those in need of additional space for a home office or guest accommodation. The two bathrooms are elegantly designed, providing a luxurious retreat for relaxation and rejuvenation.







2 St. Georges Cottages

Handcross, Haywards Heath

A standout feature of this property is the bi-fold doors leading to the rear garden, allowing for a seamless transition between indoor and outdoor living spaces. This creates an inviting ambience, perfect for enjoying al fresco dining or simply unwinding in the fresh air.

Convenience is key with allocated parking for two cars, ensuring a stress-free arrival and departure experience. Furthermore, this property is offered chain-free, providing a hassle-free purchasing process for potential buyers.

The property benefits from the remainder of the new build warranty, offering peace of mind to the new owners. Whether you are a first-time buyer looking to step onto the property ladder or a discerning investor seeking a modern and low-maintenance property, this mid-terraced house presents a compelling opportunity.

Located in a sought-after neighbourhood, this property is within close proximity to local amenities, schools, and transport links, making it an ideal choice for those looking to enjoy a convenient and vibrant lifestyle.

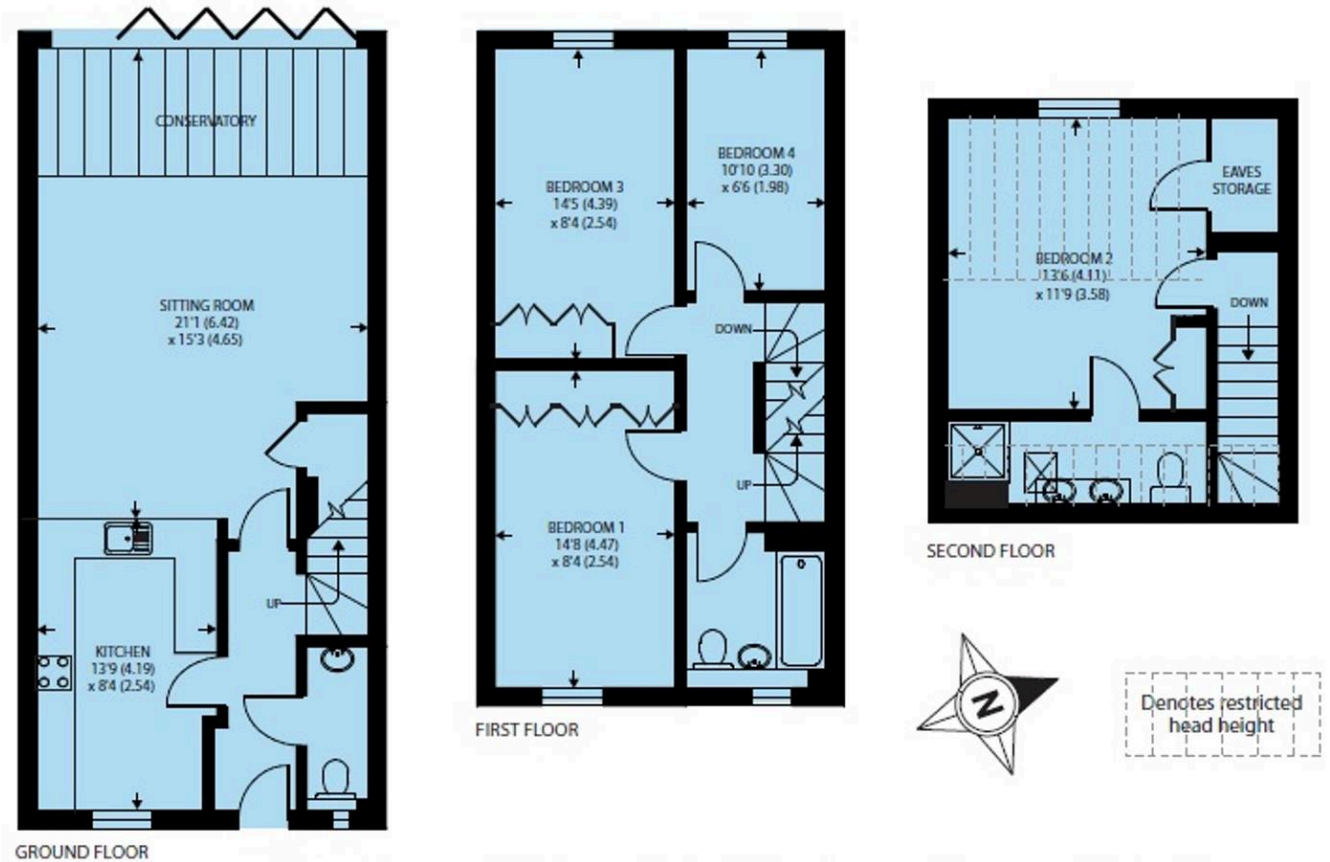
In summary, this 4-bedroom mid-terraced house presents a rare opportunity to acquire a contemporary and stylish property that effortlessly combines form and function. With its modern construction, spacious layout, and desirable features, this property is sure to impress even the most discerning of buyers.

Council Tax band: E

Tenure: Freehold

EPC Energy Efficiency Rating: B

EPC Environmental Impact Rating:



St George's Cottages, Brighton Road, Handcross, Haywards Heath

Whilst every attempt has been made to ensure the accuracy of the floor plan contained here, measurements of doors, windows and rooms are approximate and no responsibility is taken for any error, omission or misstatement. These plans are for representation purposes only as defined by RICS Code of Measuring Practice and should be used as such by any prospective purchaser. Specifically no guarantee is given on the total square footage of the property if quoted on this plan. Any figure given is for initial guidance only and should not be relied on as a basis of valuation.

Copyright nichecom.co.uk 2017 Produced for Henry Adams REF : 156862



Henry Adams – Mid & East Sussex

Henry Adams HRR Ltd, 1 Park Parade, Haywards Heath – RH16 4LX

01444 458380

haywardsheath@henryadams.co.uk

www.henryadams.co.uk/

Agents Note – Our particulars are for guidance only and are intended to give a fair overall summary of the property. They do not form part of any contract or offer, and should not be relied upon as a statement or representation of fact. Measurements, areas and distances are approximate only. Photographs may include lifestyle shots and pictures of local views. No undertaking is given as to the structural condition of the property, or any necessary consents or the operating ability or efficiency of any service, system or appliance. Please ask if you would like further information, especially before you travel to the property.