



3 New Cottages Cat Street, Upper Hartfield, TN7 4DS

£365,000 Freehold

MANSELL
McTAGGART
Trusted since 1947

3 New Cottages Cat Street, Upper Hartfield, TN7 4DS

A well presented two bedroom mid terrace property situated in a semi rural setting between the villages of Hartfield and Forest Row.

Arranged over two floors the property briefly comprises; cosy living room with log burning stove; a fitted kitchen with a range of wall and base level units, sink with drainer, space for fridge/freezer, washing machine, integrated cooker with four ring hob, tiled floor, space for a breakfast table and a window to the rear garden. The bathroom adjacent to the kitchen has been fitted with a panel enclosed bath with shower point, vanity style wash hand basin, low level W.C, heated towel rail along with a window to the side aspect.

First floor: Two bedrooms.

Externally there is driveway parking with an area of lawn and mature shrubs providing a good degree of privacy. The rear garden has been well designed and is mainly laid to lawn with a patio area, mature shrubs and planting.

The house benefits from double glazed windows and gas fired central heating with a modern boiler. Outside there is off street parking for several vehicles along with a southerly aspect rear garden.

Council Tax band: D

Tenure: Freehold





3 New Cottages Cat Street

Upper Hartfield, Hartfield

A well presented two bedroom mid terrace property situated in a semi rural setting between the villages of Hartfield and Forest Row. Lounge with wood burner, modern kitchen/breakfast room, bathroom and on the first floor two bedrooms. Driveway for 2 cars. Double glazed, gas heating.

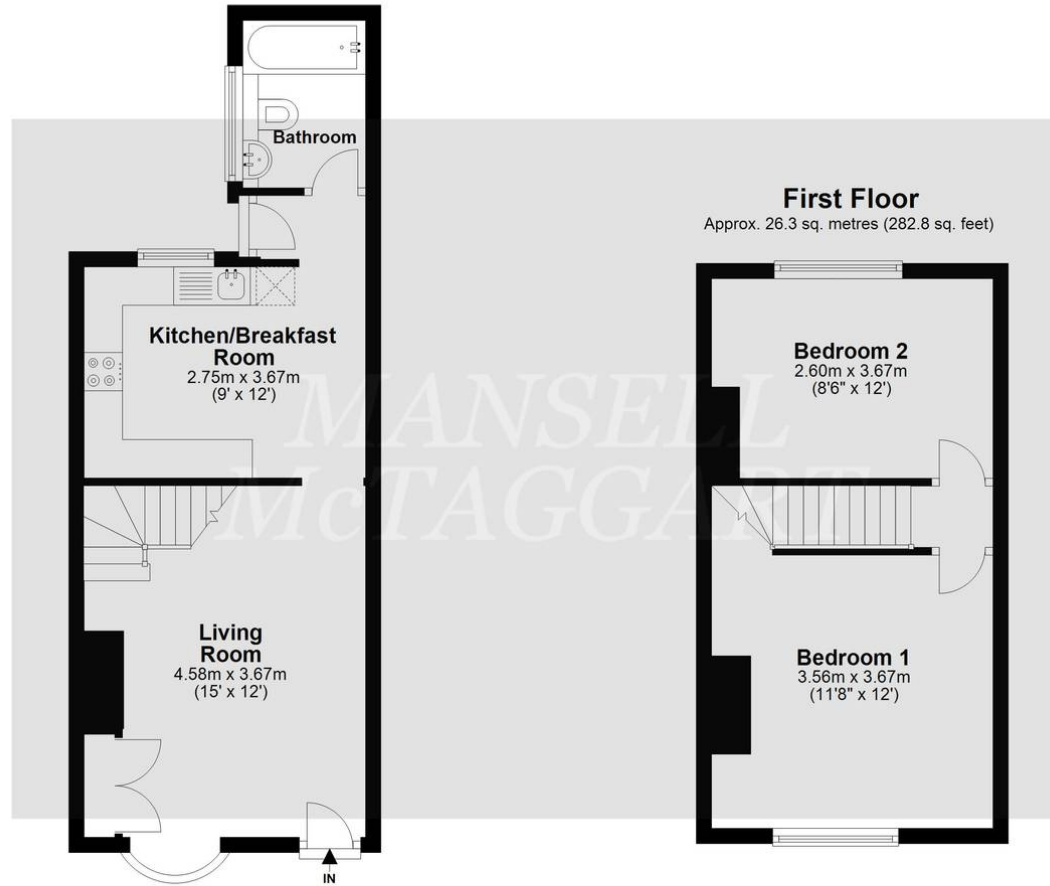
Council Tax band: D

Tenure: Freehold

- MID TERRACED HOUSE
- TWO BEDROOMS
- LIVING ROOM WITH WOOD BURNER
- KITCHEN/BREAKFAST ROOM
- BATHROOM
- SOUTHERLY ASPECT GARDEN
- DRIVEWAY PARKING
- SEMI RURAL LOCATION
- DOUBLE GLAZED THROUGHOUT
- GAS CENTRAL HEATING

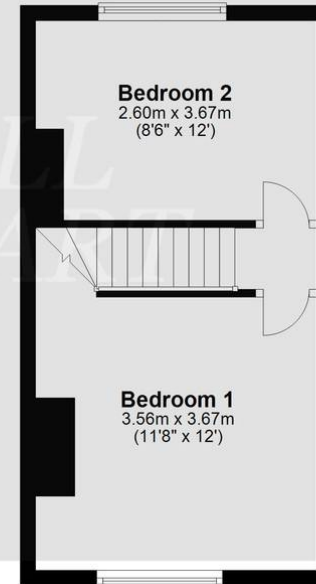
Ground Floor

Approx. 32.4 sq. metres (348.4 sq. feet)



First Floor

Approx. 26.3 sq. metres (282.8 sq. feet)



Total area: approx. 58.6 sq. metres (631.3 sq. feet)

Whilst every attempt has been made to ensure the accuracy of the floor plan contained here, measurements of doors, windows, rooms and any other item are approximate and no responsibility is taken for any error, omission, or misstatement. This plan is for illustrative purposes only and should only be used as such by any prospective purchaser.
Plan produced using PlanUp.

Mansell McTaggart Forest Row

Mansell McTaggart, Lower Road - RH18 5HE

01342 826682

fr@mansellmctaggart.co.uk

www.mansellmctaggart.co.uk/branch/forestrow/

Consumer Protection from Unfair Trading Regulations 2008 We have not tested any apparatus, equipment, fixtures, fittings or services and so cannot verify that they are in working order or fit for purpose. You are advised to obtain verification from your solicitor or surveyor. References to the tenure of a property are based on information supplied by the seller. We have not had sight of the title documents and a buyer is advised to obtain verification from their solicitor. Items shown in photographs are not included unless specifically mentioned within the sales particulars, but may be available by separate negotiation. We advise you to book an appointment to view before embarking on any journey to see a property, and check its availability.