



phillip shaw
estate agents

89 Rosslyn Crescent, Harrow

Guide Price £350,000



phillip shaw
estate agents



89 Rosslyn Crescent

Harrow, Harrow

Council Tax band: C

Tenure: Leasehold

EPC Energy Efficiency Rating: C

EPC Environmental Impact Rating: C

- Two bed ground floor maisonette with garden



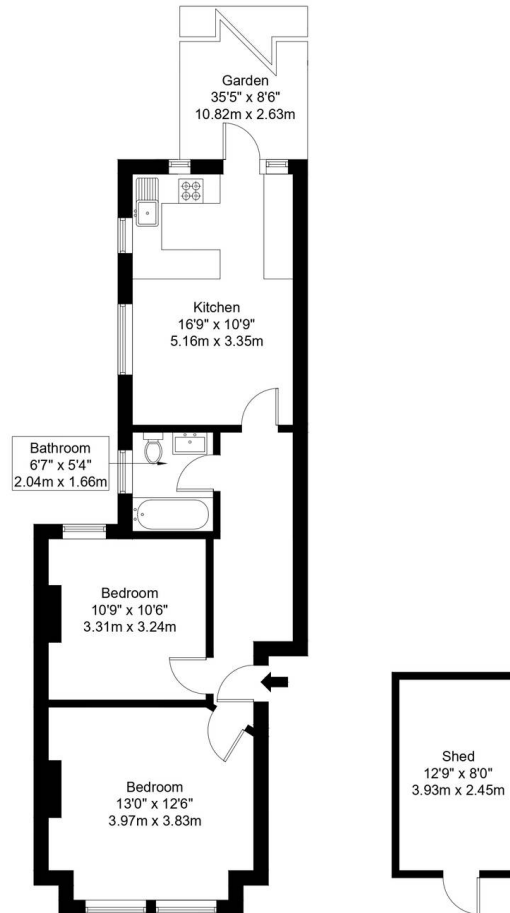
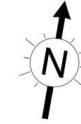
Rosslyn Crescent, HA1 2SA

Approx Gross Internal Area = 57.19 sq m / 615 sq ft

Garden = 28.46 sq m / 306 sq ft

Shed = 9.63 sq m / 103 sq ft

Total = 95.28 sq m / 1025 sq ft



Ground Floor

Ref :

Copyright **BLEU
PLAN**

The Floor plan is not to scale and measurements and areas shown are approximate and therefore should be used for illustrative purposes only. The plan has been prepared in accordance with the RICS code of Measuring Practice and whilst we have confidence in the information produced it must not be relied on. If there is any aspect of particular importance, you should carry out or commission your own inspection of the property.

Copyright @ BLEUPLAN