

ARCLIGHT

LOFTS

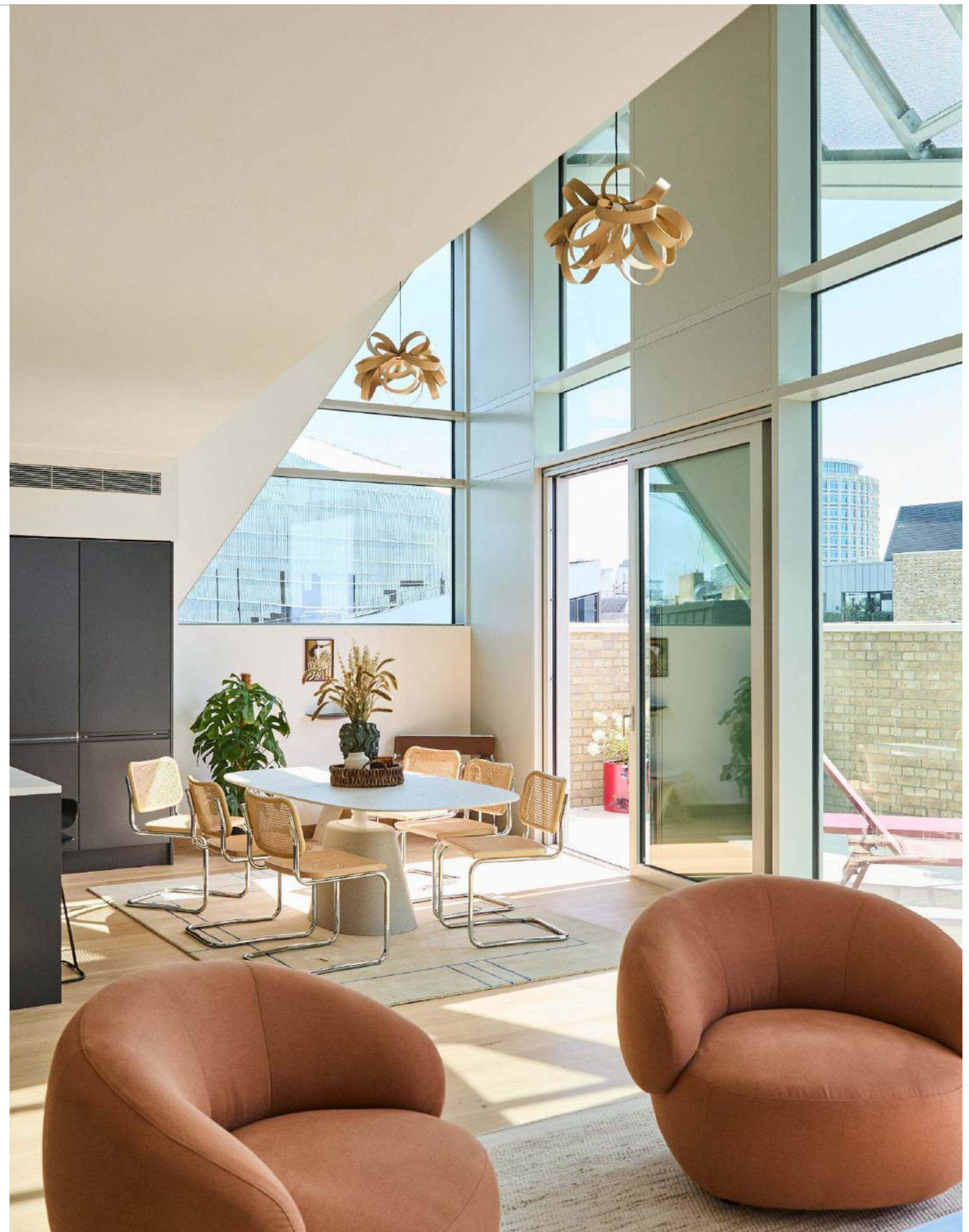
THE PENTHOUSE

Industrial heritage
meets contemporary
living in Seven Dials.

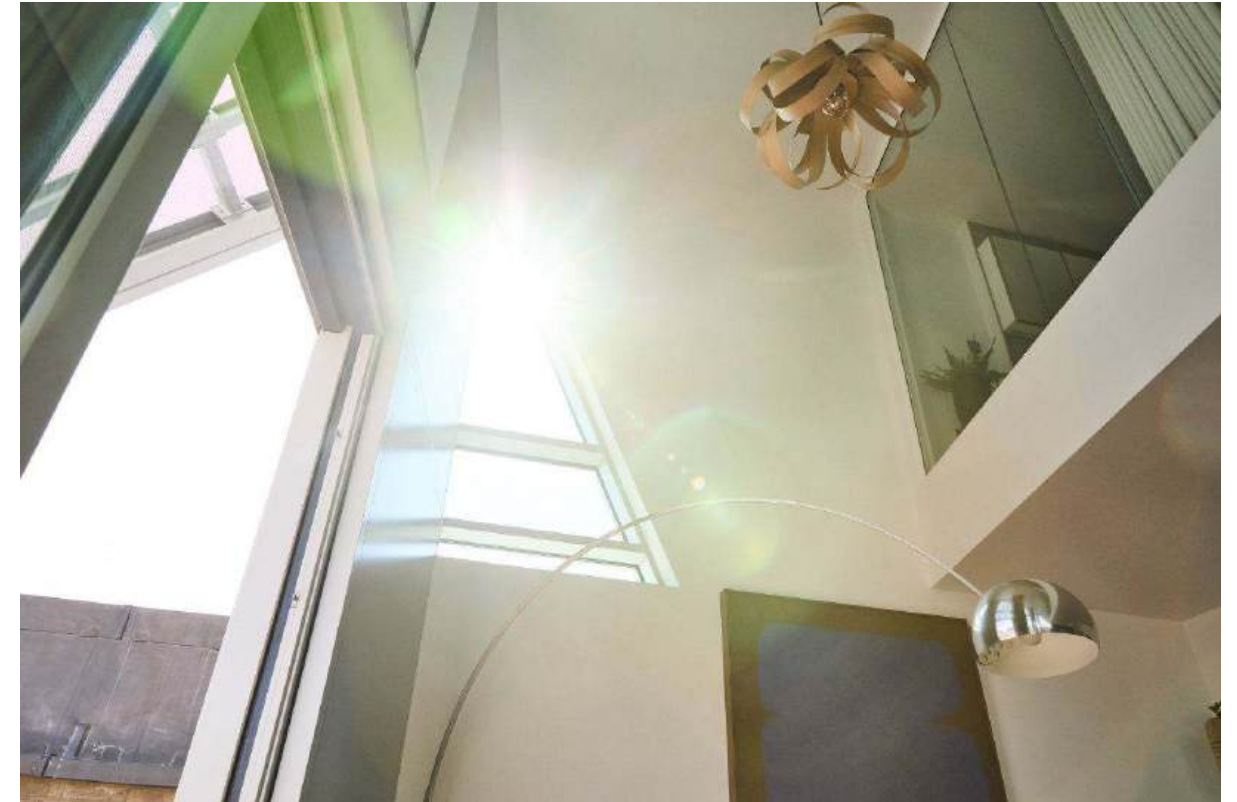
THE PENTHOUSE

The exclusive Penthouse at Arclight Lofts is an impressive and unique apartment configured over two floors, featuring a soaring double-height primary living space flooded with natural light from the floor-to-ceiling glazed facade.

Sliding glazed doors open to a connected private terrace, offering exceptional east-to-west panoramic views over the surrounding streets and rooftops of Covent Garden and Seven Dials. From the mezzanine level above, the principal bedroom suite offers a calming space with commanding views, a generous separate dressing area and contemporary en-suite bathroom.

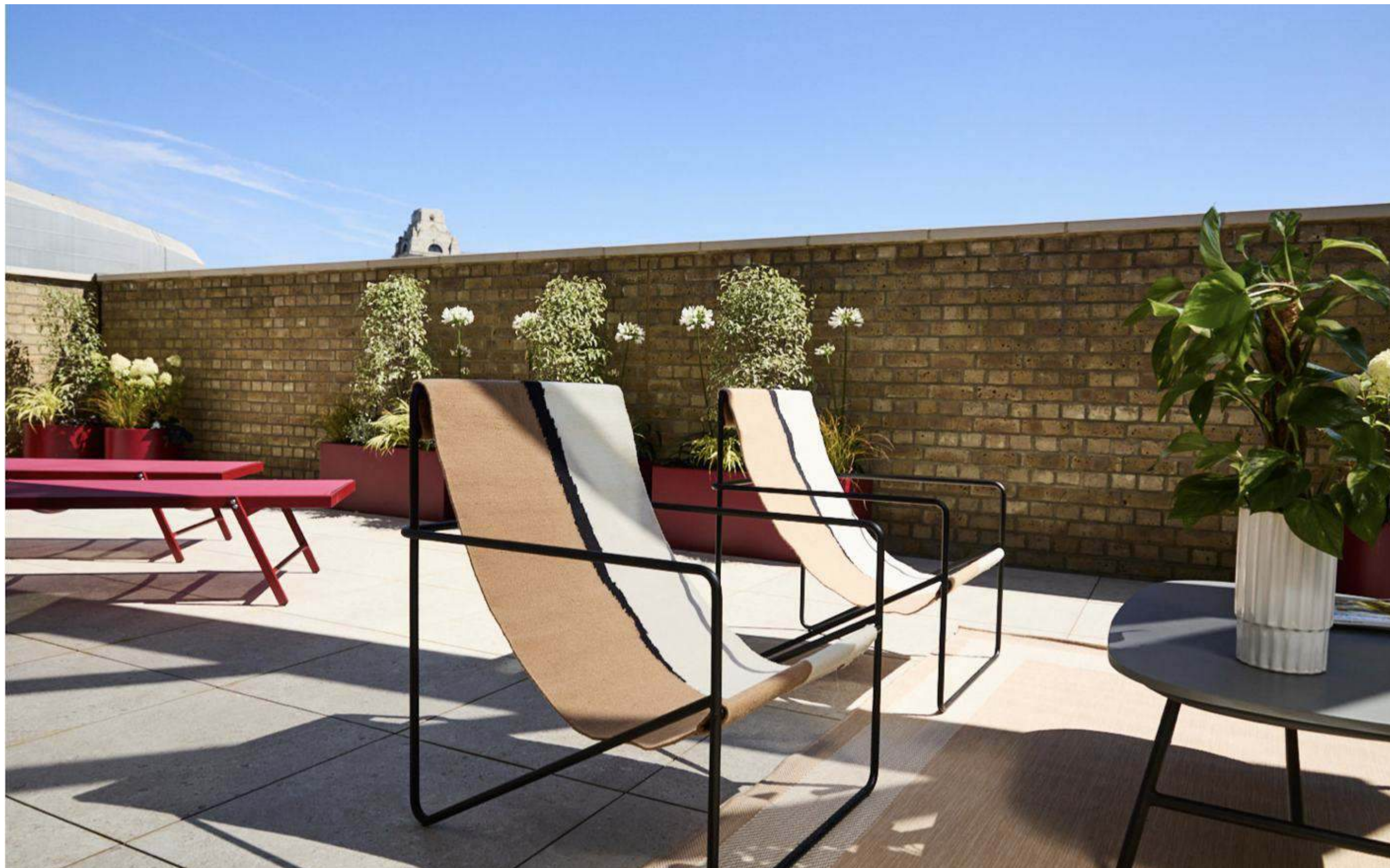






The Southeast-facing private terrace with panoramic views from the City to the West End is a true rarity, as floor-to-ceiling windows create wonderfully welcoming light-filled living spaces.





HIGHLIGHTS

A duplex penthouse in a reimagined heritage industrial building.

Located within the Seven Dials conservation area and moments from Covent Garden.

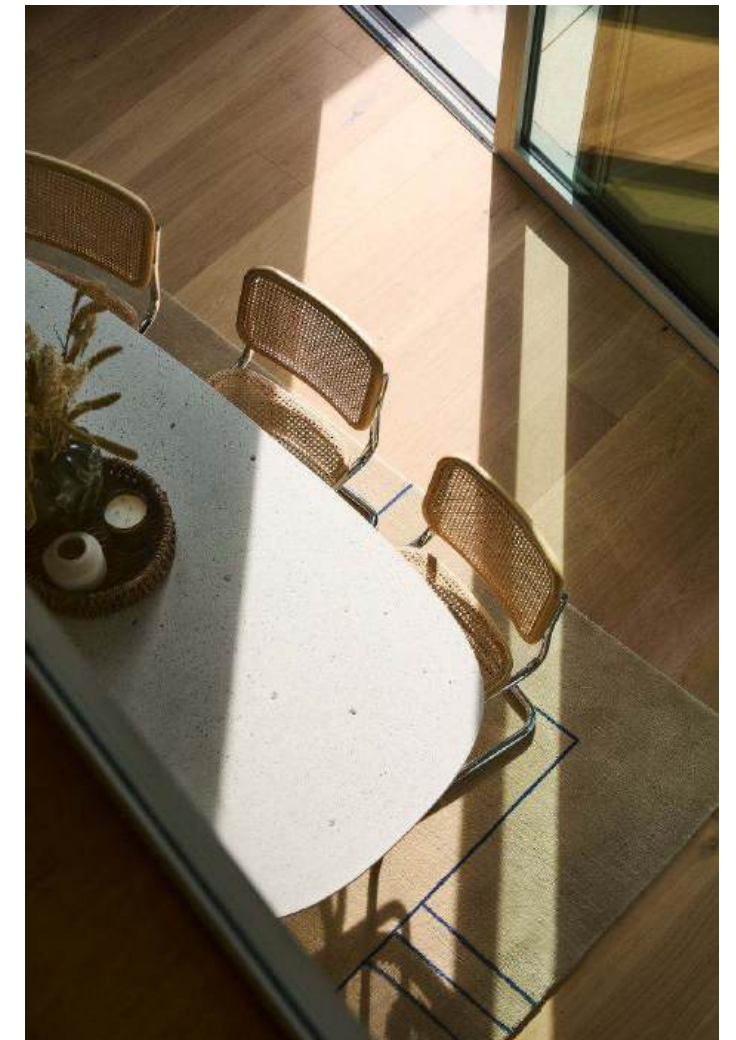
A secure arrival hall with a feature oak timber wall of end-grain block panels.

An expansive double-height, open-plan living space with full-height glazed facade.

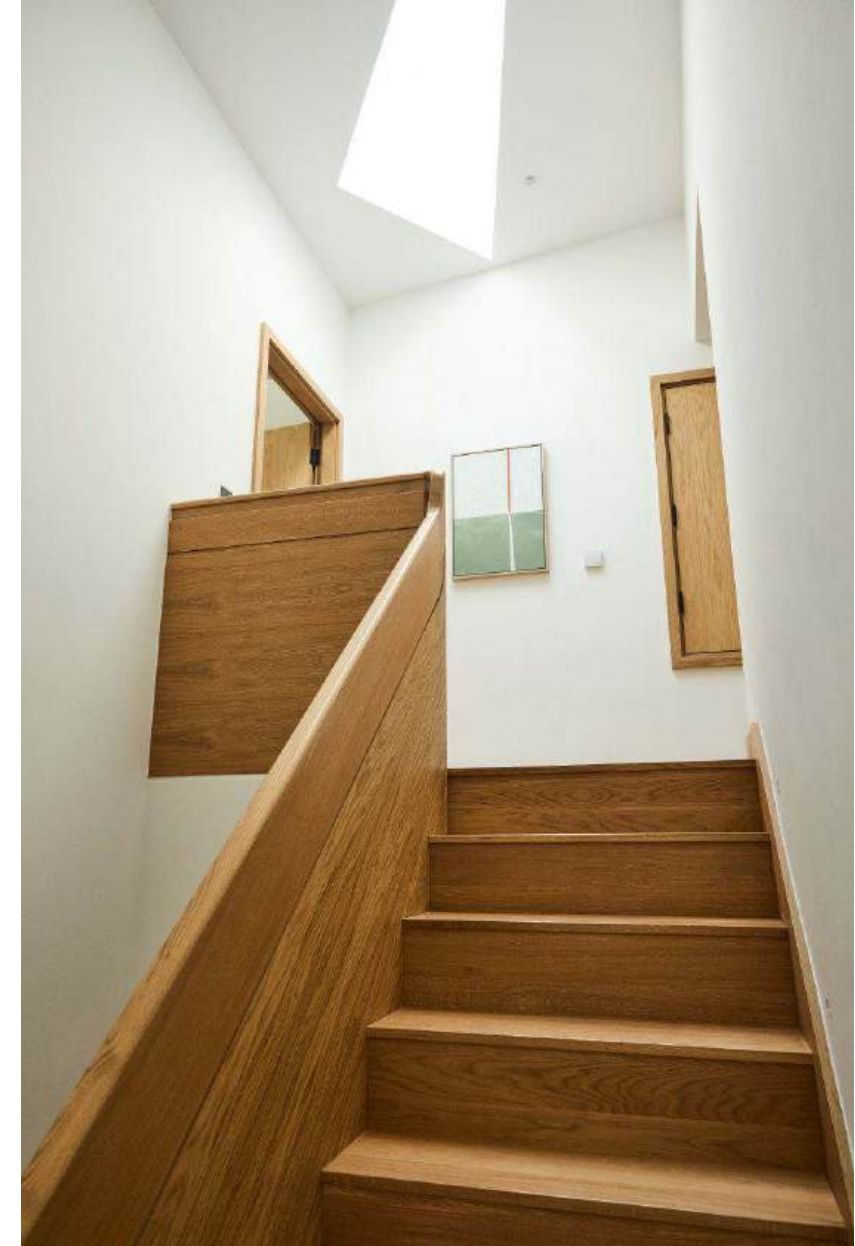
A generous private south-facing roof terrace partially covered by a bespoke engineered architectural canopy.

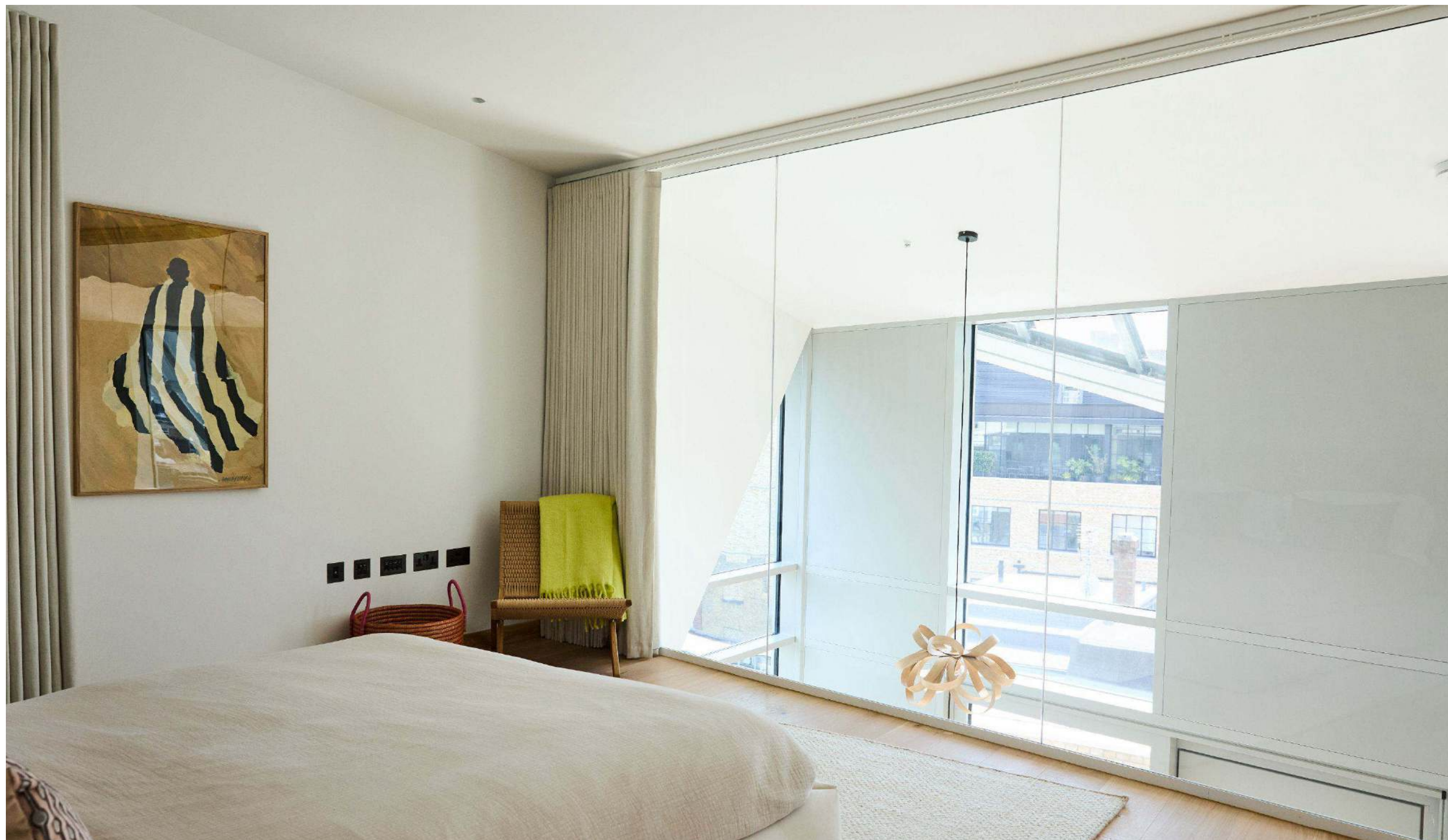
Three bedrooms, including a mezzanine-floor principal suite, all with generous en-suite bathrooms.

High-specification finishes and fittings including integrated Miele appliances and Hansgrohe brassware.



The beautiful open-plan kitchen boasts a large island, bespoke cabinetry, Silestone worktops, and Miele appliances. Overlooking the living space and outdoor terrace, this is an inviting and highly functional space bathed in natural light.







The principal suite enjoys a commanding position on the mezzanine floor. Full-height glazing running the length of the space offers unobscured views over the living area and out to the terrace and city beyond. The generous en-suite bathroom features contemporary finishes and a double vanity unit. There is the additional benefit of a separate walk-in dressing area with generous wardrobe space.





The additional two double bedrooms benefit from spacious en-suite bathrooms and are designed and finished to an exceptionally high standard.

A NEIGHBOURHOOD RADIANT WITH LIFE



Seven Dials Market, 3 min walk

Tucked away but full of life, the cobbled streets of Seven Dials are a village-like haven in the fast-paced heart of central London. Together with the vibrant Covent Garden neighbourhood, this local area offers seemingly countless big-name retail brands, concept stores and independent boutiques alongside delectable dining destinations, sparkling bars and artisan cafés.



Caravan, 2 min walk



St John Bakery, 2 min walk



Monmouth Street, 3 min walk

LIVE IN THE SPOTLIGHT

FOOD + DRINK

- 01 Ole & Steen
- 02 Seven Dials Market
- 03 Story Cellar
- 04 The Escapologist Bar
- 05 Monmouth Kitchen
- 06 Monmouth Coffee
- 07 Brasserie Max
- 08 St. John Bakery
- 09 The Barbary
- 10 Dishoom
- 11 Dalla Terra Wine Bar
- 12 Temper
- 13 Le Bab
- 14 Hawksmoor
- 15 The 10 Cases
- 16 Banh Mi Aha!
- 17 Caravan
- 18 Redemption Roasters
- 19 Circus
- 20 Parsons
- 21 Baudry Greene
- 22 Bab Mansour
- 23 Da Mario
- 24 26 Grains

RETAIL

- 01 Birkenstock
- 02 Sakare
- 03 MALIN+GOETZ
- 04 Aesop
- 05 Kiehl's
- 06 Rains
- 07 Carhartt WIP Store
- 08 The Ordinary
- 09 Space NK
- 10 Axel Arigato
- 11 Zara
- 12 Brompton
- 13 Uniqlo

LIFESTYLE

- 01 Top Secret Comedy Club
- 02 Nuffield Health
- 03 Oasis Sports Centre
- 04 1 Rebel
- 05 Aveda Salon & Spa
- 06 Cambridge Theatre
- 07 Covent Garden Hotel
- 08 The Garden Cinema





Redemption Roasters, 2 min walk



The Cheese Bar, 3 min walk



Neal Street, 1 min walk



Story Cellar, 1 min walk



Neal's Yard, 3 min walk

CONNECTIVITY


WALK TO STATION

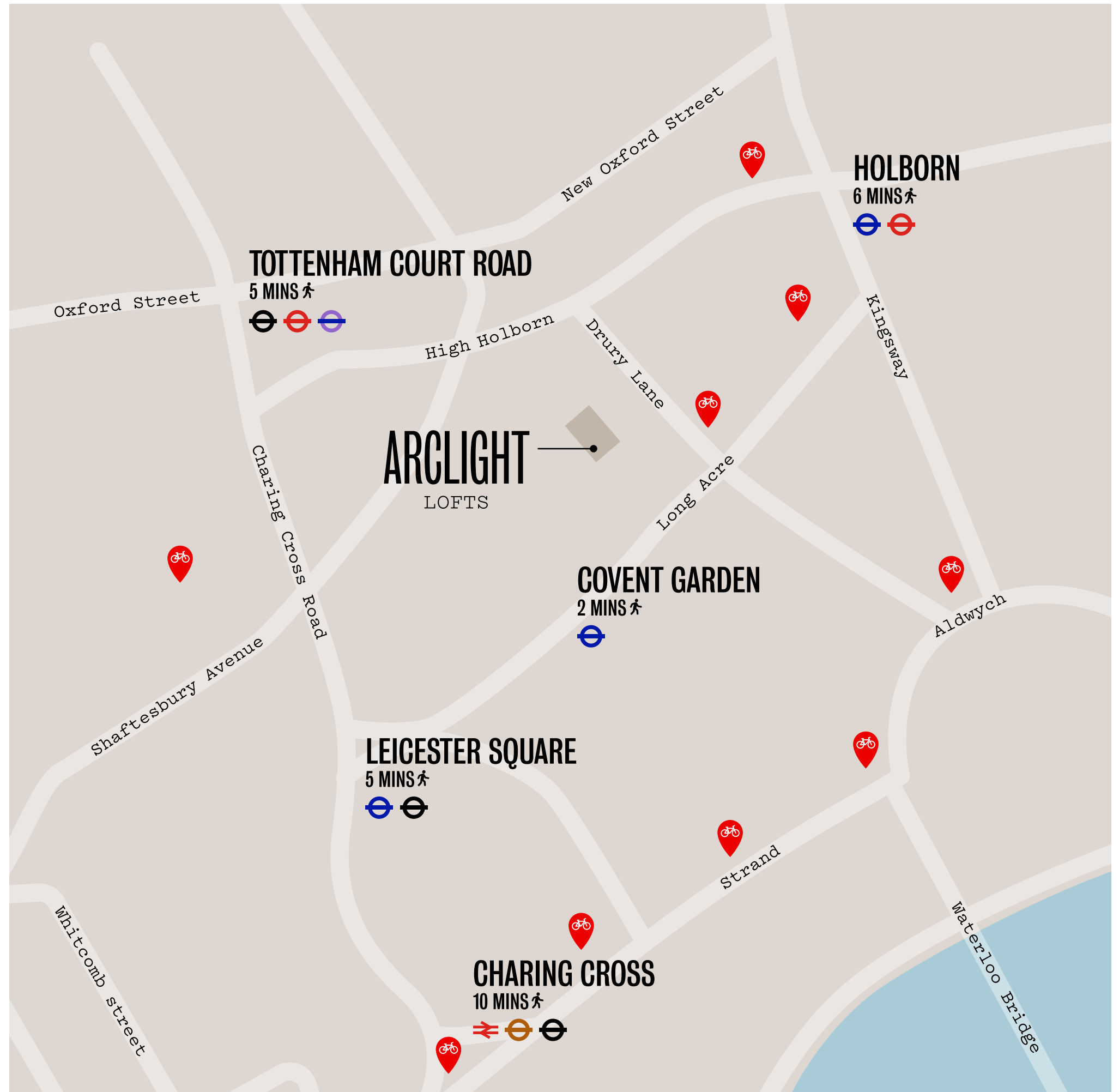
- Covent Garden ————— 2 mins
- Tottenham Court Rd ————— 5 mins
- Leicester Square ————— 5 mins
- Holborn ————— 6 mins
- Charing Cross ————— 10 mins

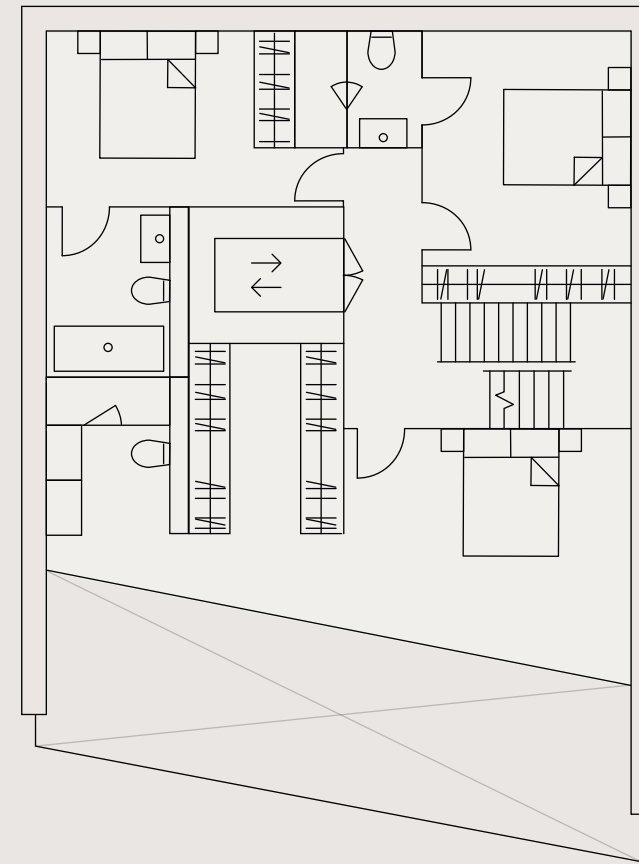
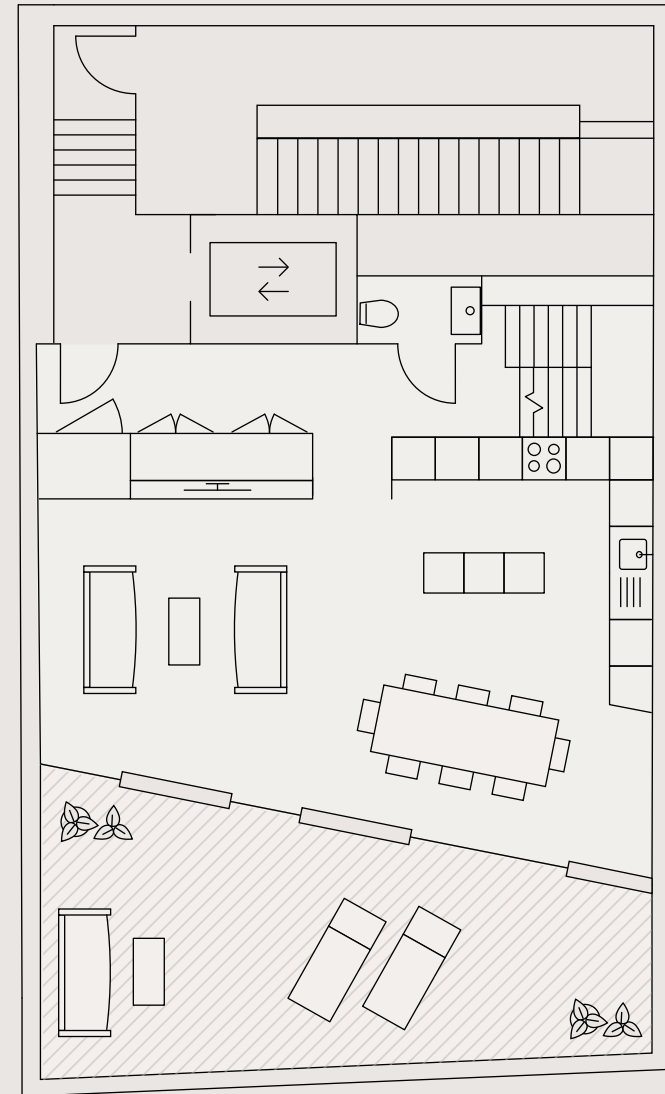
CYCLE

- Waterloo ————— 5 mins
- Farringdon ————— 10 mins
- King's Cross ————— 10 mins
- London Bridge ————— 10 mins

KEY

 Santander cycle stations






4th & 5th Floor

THE PENTHOUSE

1,845 SQ FT / 171.4 SQ M

 3 Bedrooms

 3 Bathrooms

 1 Terrace

 1 Guest cloakroom

ARCLIGHT

LOFTS

tavistockbow

Craig Simpson
craig@tavistockbow.com
+44 7707 840 613

tavistockbow.com

**Knight
Frank** 

Jonathan Fieldman
Jonathan.Fieldman@knightfrank.com
+44 7971 060 538

knightfrank.com

MISREPRESENTATION ACT DISCLAIMER: Tavistock Bow & Knight Frank ('The Agents') for themselves and for the vendor(s) of this property whose agents they are, give notice that: 1. These particulars do not constitute, nor constitute any part of, an offer or contract. 2. None of the statements contained in these particulars as to the property are to be relied on as statements or representations of fact. 3. Any intending purchaser or lessee must satisfy themselves by inspection or otherwise as to the correctness of each of the statements contained in these particulars. 4. The vendor(s) do not make or give and neither The Agents nor any person in their employment has any authority to make or give any representation or warranty whatever in relation to this property. Finance Act 1989: Unless otherwise stated all prices and rents are quote exclusive of VAT. Property Misdescriptions Act 1991 & Consumer Protection from Unfair Trading Regulations 2008: These details are believed to be correct at the time of compilation but may be subject to subsequent amendment.