



5 Bedrooms



3 Bath/Shower Rooms



3 Reception Rooms



Off Street Parking



Private Garden



EPC Band C

Council Tax
Band: G £3,715.90
April 24/March 25

Local Authority
St Albans District Council

 **ashtons**
for life's great moves



Hilltop Walk, Harpenden, AL5 1AU
Offers in excess of £1,350,000 Freehold

Hilltop Walk, Harpenden

This stunning villa-style, five-bedroom detached family home provides an abundance of versatile living space spread across three floors. Impeccably presented throughout, it is situated in a highly sought-after area known for its excellent schools, making it an ideal choice for families.

Description

Built in 2003 and set on a peaceful private road, this impressive five-bedroom detached home offers generous space and is finished to an exceptional standard.

Spanning three floors, the layout includes an inviting entrance hall with a convenient WC, and reading room, front-facing dining room, and a spacious living room at the rear that opens onto the garden. The kitchen/diner is bright, modern, and perfect for family meals, with a fridge and Freezer plus dishwasher which are all Siemens and fully integrated along with a boiling water tap in kitchen for convenience. With access to the integral garage.

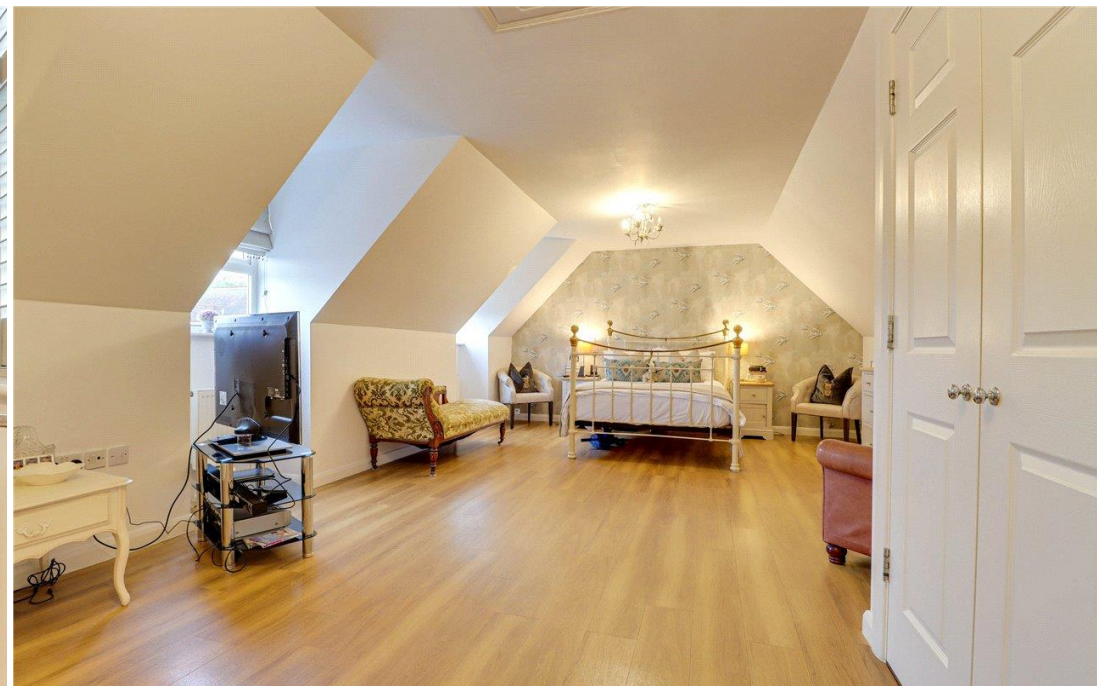
The first floor features four well-proportioned bedrooms, including one with an ensuite shower room, while a family bathroom serves the remaining bedrooms. The second floor is dedicated to a stunning principal suite of excellent proportions, complete with a luxurious bathroom.

With off-road parking at the front and a beautifully maintained rear garden, this is a perfect family home, offering both comfort and privacy in a prime location.

Location

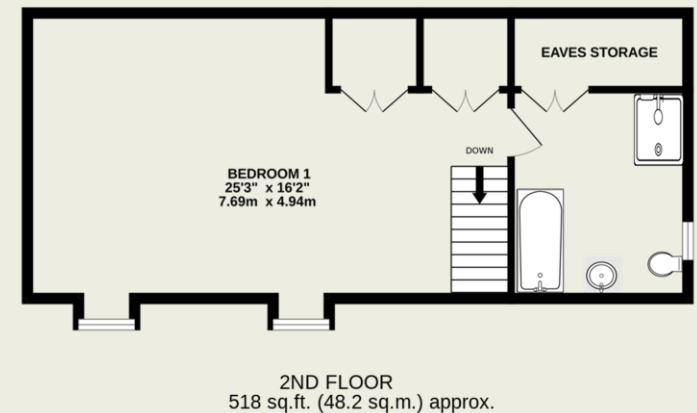
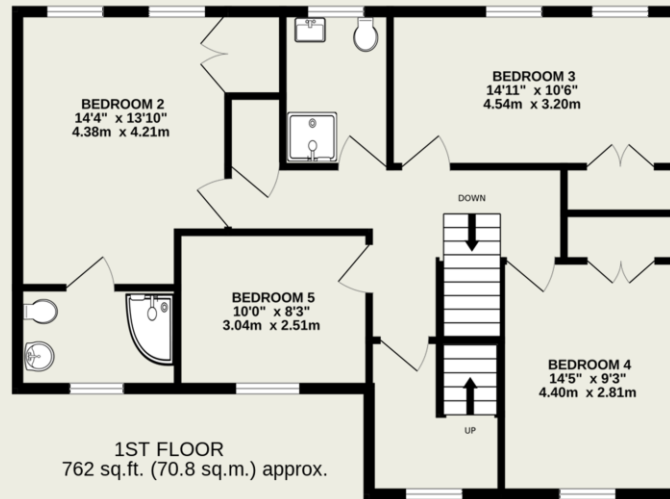
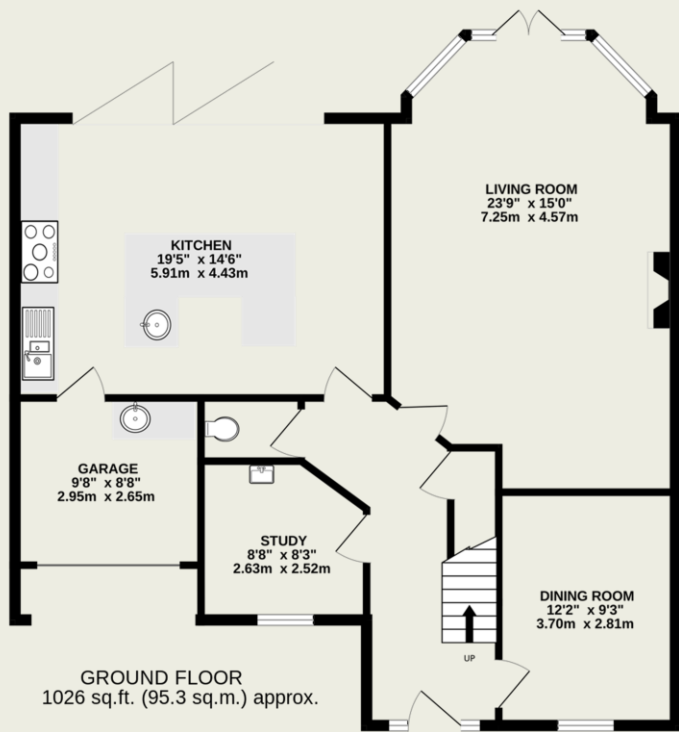
Hilltop Walk is a highly sought-after location in South Harpenden, offering a variety of beautiful homes in a peaceful, family-friendly setting. This rare opportunity to own a property here is further enhanced by its proximity to outstanding schools and the stunning open countryside. Harpenden's town centre and station, with direct links to St Pancras International, are just 0.8 miles away, while the charming shops, pubs, and restaurants of Southdown are just a short stroll from the doorstep. This truly is an exceptional location, perfect for any stage of life.





Important Information

These particulars do not constitute an offer or contract in whole or part. The statements contained herein are made without responsibility on the part of Ashtons or the vendors and they cannot be relied upon as representatives of fact. In respect of floor plans, these are for illustrative purposes only. The measurement and position of each element is approximate and must be viewed as such. Intending purchasers should therefore satisfy themselves by inspection or otherwise as to their correctness. The vendors do not make or give, and neither Ashtons nor any person in their employment has any authority to make or give, any representation or warranty whatsoever in relation to this property. We offer a wide range of services through third party providers including solicitors, surveyors, removal firms, mortgage providers and EPC suppliers. We receive additional payments for administering suppliers quoting software and making referrals. You are not under any obligations to use these services and it is your discretion whether you choose to deal with these parties or your own preferred supplier. You should be aware the average payment we received in 2021 equated to £48.36 per referral.



TOTAL FLOOR AREA : 2307 sq.ft. (214.3 sq.m.) approx.

This floorplan is for illustration purposes only. The measurements and position of each element are approximate and must be viewed as such.